

University of Massachusetts Amherst

From the Selected Works of Wilmore C Webley

November 16, 2006

BMC Infectious Diseases

Frances Cirino

Wilmore C Webley, *University of Massachusetts - Amherst*

Corrie West

Nancy L. Croteau

Chester Andrzejewski Jr, et al.



Available at: https://works.bepress.com/wilmore_webley/8/

Correction

Open Access

Correction: Detection of *Chlamydia* in the peripheral blood cells of normal donors using *in vitro* culture, immunofluorescence microscopy and flow cytometry techniques

Frances Cirino¹, Wilmore C Webley¹, Corrie West¹, Nancy L Croteau¹, Chester Andrzejewski Jr² and Elizabeth S Stuart*¹

Address: ¹Department of Microbiology, University of Massachusetts, Amherst Massachusetts, 01003, USA and ²Department of Transfusion Medicine Baystate Medical Center, Springfield, Massachusetts, 01199, USA

Email: Frances Cirino - fcirino@microbio.umass.edu; Wilmore C Webley - wilmore@microbio.umass.edu; Corrie West - esstuart@microbio.umass.edu; Nancy L Croteau - Nancy.Croteau@umassmed.edu; Chester Andrzejewski - chester.andrzejewski@bhs.org; Elizabeth S Stuart* - esstuart@microbio.umass.edu

* Corresponding author

Published: 16 November 2006

Received: 13 November 2006

BMC Infectious Diseases 2006, 6:165 doi:10.1186/1471-2334-6-165

Accepted: 16 November 2006

This article is available from: <http://www.biomedcentral.com/1471-2334/6/165>

© 2006 Cirino et al; licensee BioMed Central Ltd.

This is an Open Access article distributed under the terms of the Creative Commons Attribution License (<http://creativecommons.org/licenses/by/2.0>), which permits unrestricted use, distribution, and reproduction in any medium, provided the original work is properly cited.

Upon close examination of the representative image depicted in 'figure 2' from [1] and a figure published elsewhere [2], we realized that the 'figure 2' of this work was a lower magnification of a section of the same microscope slide used in the previous manuscript [2]. The experiments leading to the data for these two manuscripts were generated during the same time period, in the same laboratory and were compiled, annotated and stored in the same folder, since pictures are taken in bulk at our micro-

scopy facility on a fee for service basis. The figures both describe tissue culture of *Chlamydia* from clinical samples on the same tissue culture substrate (J774A.1 cells) and were in a single data base of figures with different alpha numeric designations.

We believe that sometime during the compilation and annotation process, the representative 'figure 2' previously shown in this work was incorrectly labeled. After careful

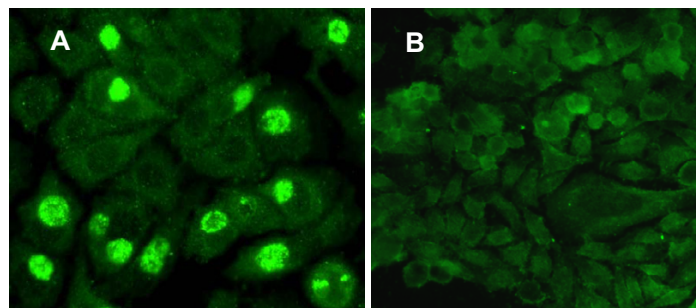


Figure 1

This image is provided as a replacement for the original figure 2; *Chlamydiae* within Peripheral Blood Transfer Infection when Cultured *in vitro* on J774A.1 host cell monolayers. BC from NBD peripheral blood samples were isolated, lysed and layered onto host cell monolayers as described. Epifluorescence image in **Panel A** shows a representative 96 h pi culture of a BC lysate from a *Chlamydia* smear positive sample. **Panel B** shows a representative example of a 96 h pi culture of a BC lysate from a *Chlamydia* negative smear sample. Note: panel A contains numerous cells with large inclusions, as well as cells with smaller inclusions. These are characteristic of multiple replicative rounds in culture. Photographed using a Nikon Eclipse E600 epifluorescence microscope and a SPOT digital camera Original magnification 400 \times .

scrutiny, we have determined that the image was in fact taken from a culture coverslip that was infected with lysates from pediatric bronchial lavage samples and not normal blood donor buffy coat (BC) samples. The original published figure was a 600× immunofluorescence image [2], part of which can be seen in the lower magnification image (400×) in this work.

The authors deeply regret this error in image annotation and later image selection and therefore submit a representative image from this work to replace the earlier incorrect image depicted in 'figure 2', which is provided with this manuscript (see figure 1).

References

1. Cirino F, Webley WC, West C, Croteau NL, Andrzejewski C Jr., Stuart ES: **Detection of Chlamydia in the peripheral blood cells of normal donors using in vitro culture, immunofluorescence microscopy and Flow Cytometry techniques.** *BMC Infect Dis* 2006, **6**:23.
2. Webley WC, Salva PS, Andrzejewski C, Cirino F, West CA, Tilahun Y, Stuart ES: **The bronchial lavage of pediatric patients with asthma contains infectious Chlamydia.** *Am J Respir Crit Care Med* 2005, **171**(10):1083-1088.

Publish with **BioMed Central** and every scientist can read your work free of charge

"BioMed Central will be the most significant development for disseminating the results of biomedical research in our lifetime."

Sir Paul Nurse, Cancer Research UK

Your research papers will be:

- available free of charge to the entire biomedical community
- peer reviewed and published immediately upon acceptance
- cited in PubMed and archived on PubMed Central
- yours — you keep the copyright

Submit your manuscript here:
http://www.biomedcentral.com/info/publishing_adv.asp

