



San Luis Obispo Open Space Survey



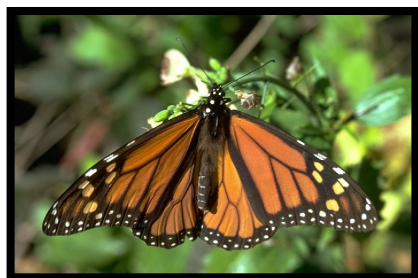
CAL POLY
SAN LUIS OBISPO



CITY OF SAN LUIS OBISPO



San Luis Obispo Open Space Survey



CAL POLY
SAN LUIS OBISPO



CITY OF SAN LUIS OBISPO



San Luis Obispo Open Space Survey



CAL POLY
SAN LUIS OBISPO



CITY OF SAN LUIS OBISPO



San Luis Obispo Open Space Survey

Presentation Overview:

- ❖ Rationale for Presentation Discussion
- ❖ City of San Luis Obispo Greenbelt Background & History
- ❖ Facilities Assessment of City of SLO Open Space Properties
- ❖ Open Space Survey Methods & Major Findings
- ❖ Recommendations & Next Steps

CAL POLY
SAN LUIS OBISPO



CITY OF SAN LUIS OBISPO



San Luis Obispo Open Space Survey

Rationale for Presentation Discussion:

- ❖ **Data driven** approach to open space land management decisions and priority setting.
- ❖ **Understand the value** of the City's Greenbelt Protection Program and the investments that have and will be made.
- ❖ **Enhance awareness** and **stewardship** of natural resource values in and around town.
- ❖ **Increase** the efforts to make SLO more pedestrian and bike friendly by enhancing local infrastructure and signage, and increase the awareness of their availability to open space users.

CAL POLY
SAN LUIS OBISPO



CITY OF SAN LUIS OBISPO



San Luis Obispo Open Space Survey








City of San Luis Obispo Greenbelt Background & History:

- ❖ Program started in 1994-1996, now in our 20th year
- ❖ 7,000 acres in some form of conservation status with the City
– total Greenbelt area is 54,000 acres
- ❖ 11 City Open Space properties totaling about 3,500 acres
- ❖ 8 major conservation easements, and many smaller open space easements totaling about 3,500 acres
- ❖ Open Space Acquisition CIP of \$200,000 / year
- ❖ Natural Resources Program operating budget of about \$85,000 / year (not including personnel etc.)
- ❖ Partnership with Ranger Service, Parks & Recreation Dept.



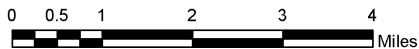
San Luis Obispo Open Space Survey

Map Key:

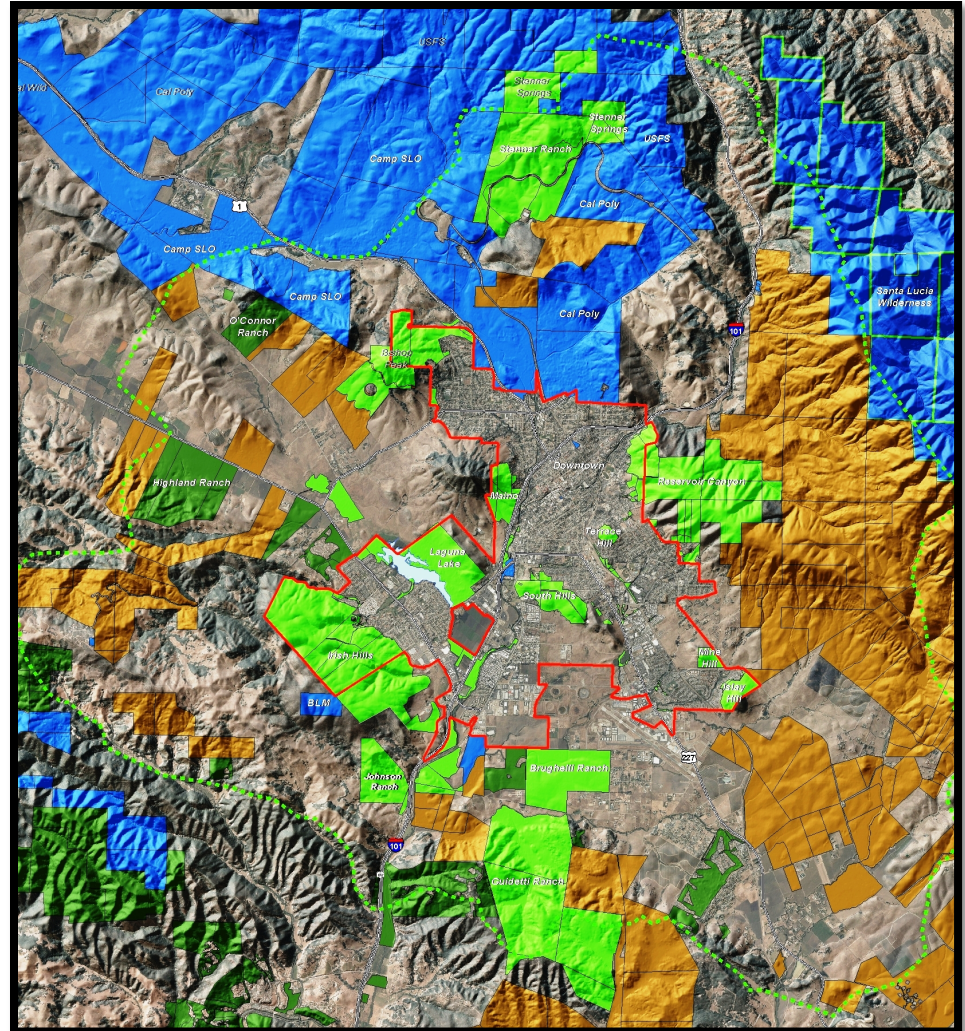
-  Greenbelt Boundary
-  City Limit
-  City of SLO Conservation and Open Space
-  Others' Conservation and Open Space
-  Public Lands
-  Williamson Act
-  Wilderness Area

*The San Luis Obispo Greenbelt:
Existing Conservation Lands*

Scale:



CAL POLY
SAN LUIS OBISPO



CITY OF SAN LUIS OBISPO



San Luis Obispo Open Space Survey



CAL POLY
SAN LUIS OBISPO

Facilities Assessment – Bishop Peak Natural Reserve



CITY OF SAN LUIS OBISPO



San Luis Obispo Open Space Survey



CAL POLY
SAN LUIS OBISPO

Facilities Assessment – Cerro San Luis Natural Reserve



CITY OF SAN LUIS OBISPO



San Luis Obispo Open Space Survey



CAL POLY
SAN LUIS OBISPO

Facilities Assessment – Cerro San Luis Natural Reserve



CITY OF SAN LUIS OBISPO



San Luis Obispo Open Space Survey



CAL POLY
SAN LUIS OBISPO

Facilities Assessment – Johnson Ranch Open Space



CITY OF SAN LUIS OBISPO



San Luis Obispo Open Space Survey



CAL POLY
SAN LUIS OBISPO

Facilities Assessment – Johnson Ranch Open Space



CITY OF SAN LUIS OBISPO



San Luis Obispo Open Space Survey



CAL POLY
SAN LUIS OBISPO

Facilities Assessment – Reservoir Canyon Natural Reserve



CITY OF SAN LUIS OBISPO



San Luis Obispo Open Space Survey



CAL POLY
SAN LUIS OBISPO

Facilities Assessment – Reservoir Canyon Natural Reserve



CITY OF SAN LUIS OBISPO



San Luis Obispo Open Space Survey



CAL POLY
SAN LUIS OBISPO

Facilities Assessment – Islay Hill Open Space



CITY OF SAN LUIS OBISPO



San Luis Obispo Open Space Survey



CAL POLY
SAN LUIS OBISPO

Facilities Assessment – Laguna Lake Natural Reserve



CITY OF SAN LUIS OBISPO



San Luis Obispo Open Space Survey



CAL POLY
SAN LUIS OBISPO

Facilities Assessment – South Hills Natural Reserve



CITY OF SAN LUIS OBISPO



San Luis Obispo Open Space Survey



CAL POLY
SAN LUIS OBISPO

Facilities Assessment – South Hills Natural Reserve



CITY OF SAN LUIS OBISPO



San Luis Obispo Open Space Survey



CAL POLY
SAN LUIS OBISPO

Facilities Assessment – Stenner Springs Natural Reserve



CITY OF SAN LUIS OBISPO



San Luis Obispo Open Space Survey



CAL POLY
SAN LUIS OBISPO

Facilities Assessment – Terrace Hill Open Space



CITY OF SAN LUIS OBISPO



San Luis Obispo Open Space Survey

Survey Methodology:

1. Facilities Assessment
 - ❖ Aesthetics, Environmental, Land Use, Transport /Accessibility
2. Survey
 - ❖ Online / Mobile & Intercept
3. Automated Counts



Open Space Survey Major Findings



CITY OF SAN LUIS OBISPO



San Luis Obispo Open Space Survey

Survey Quick Facts:

- ❖ Roughly 400 Respondents
- ❖ Results Statistically Significant at the 99% Conf. Int. +/- 6
- ❖ Documented Users from Across SLO County but also from Out of State / Country
- ❖ Most Use Open Spaces for Recreation or Exercise, and in Groups



Open Space Survey Major Findings



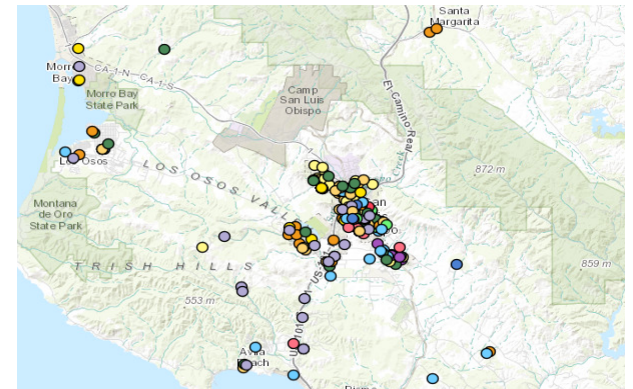
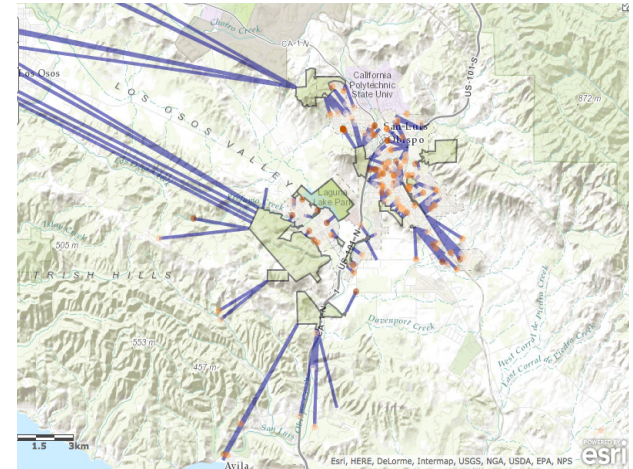
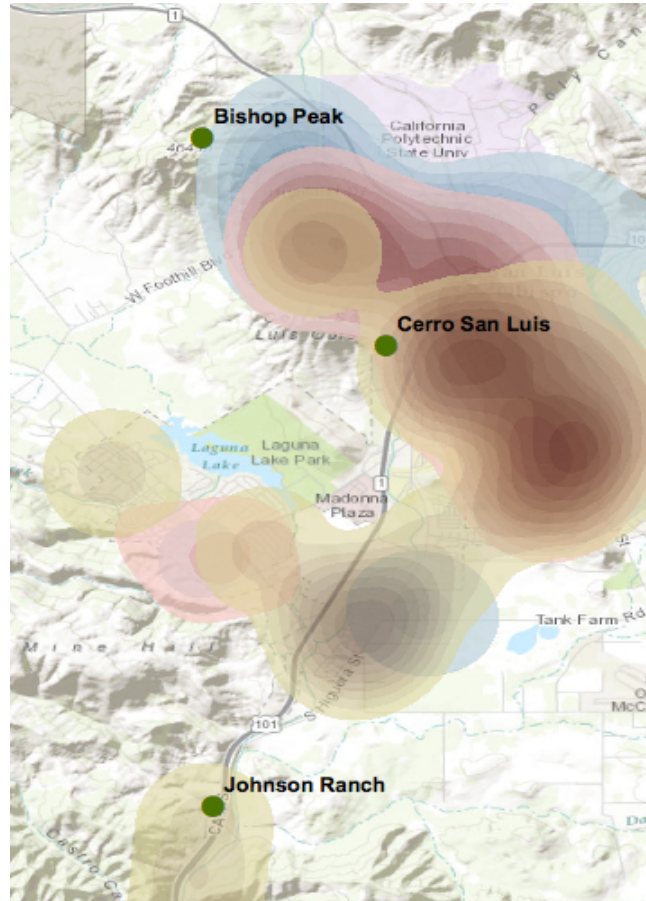
CITY OF SAN LUIS OBISPO



San Luis Obispo Open Space Survey

Users are
from Across
the Region

CAL POLY
SAN LUIS OBISPO



Open Space Survey Major Findings

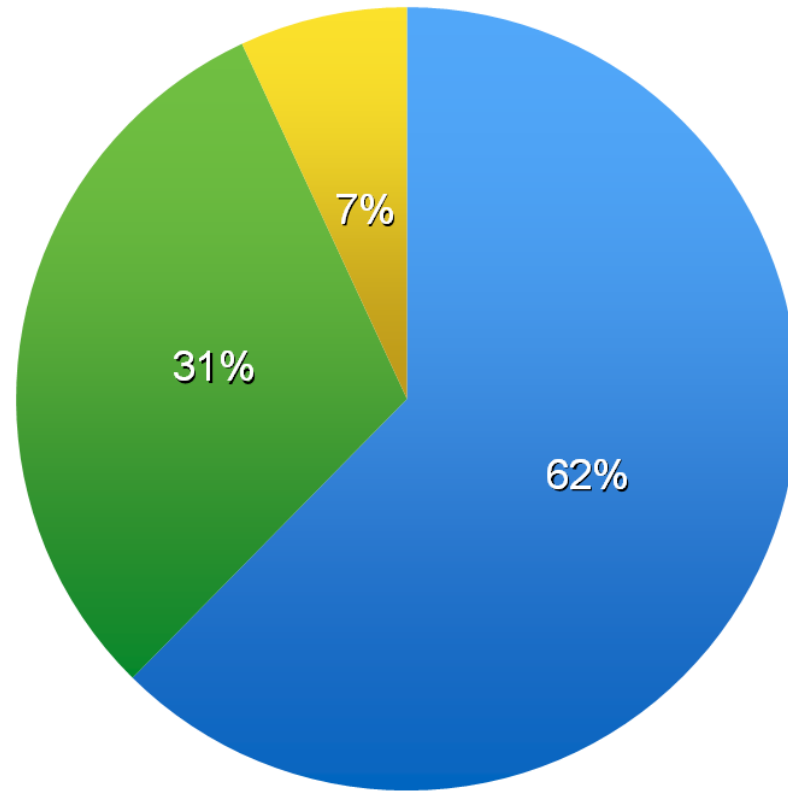


CITY OF SAN LUIS OBISPO



San Luis Obispo Open Space Survey

Where are Open Space Users From?



■ City of SLO

■ County of SLO

■ CA, USA, International

CAL POLY
SAN LUIS OBISPO

Open Space Survey Major Findings

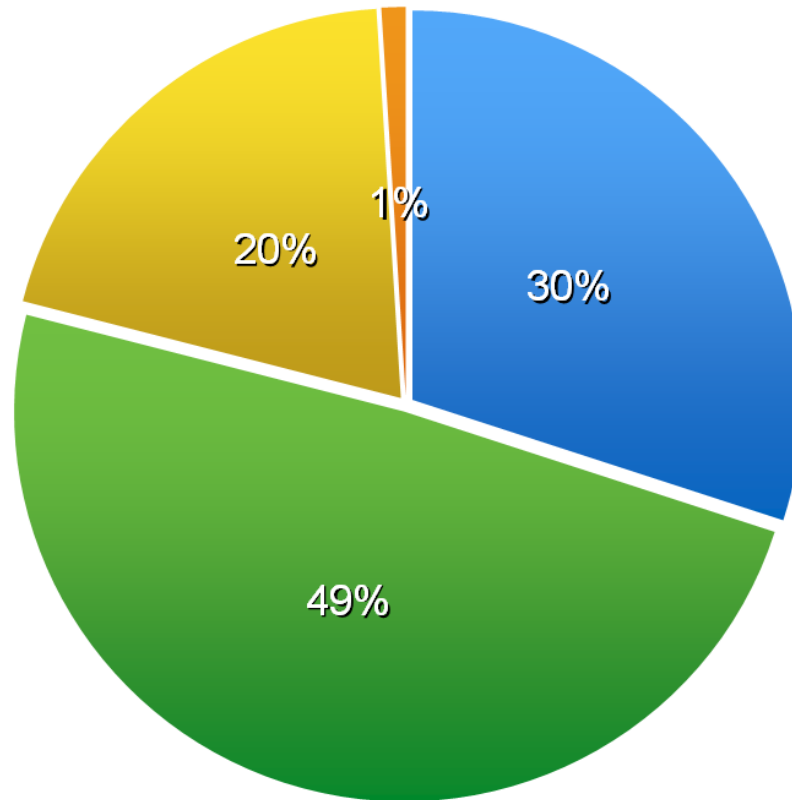


CITY OF SAN LUIS OBISPO



San Luis Obispo Open Space Survey

Educational Attainment of Users



■ Graduate Degree
■ High School

■ Undergraduate Degree
■ Prefer not to Say

CAL POLY
SAN LUIS OBISPO

Open Space Survey Major Findings

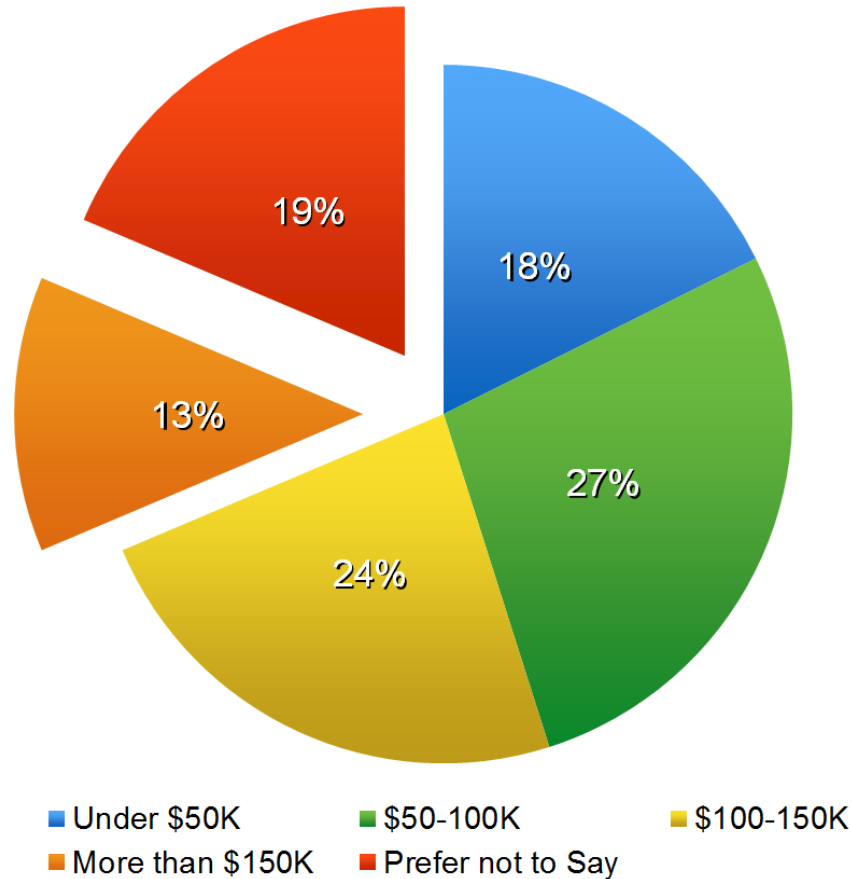


CITY OF SAN LUIS OBISPO



San Luis Obispo Open Space Survey

Household Income

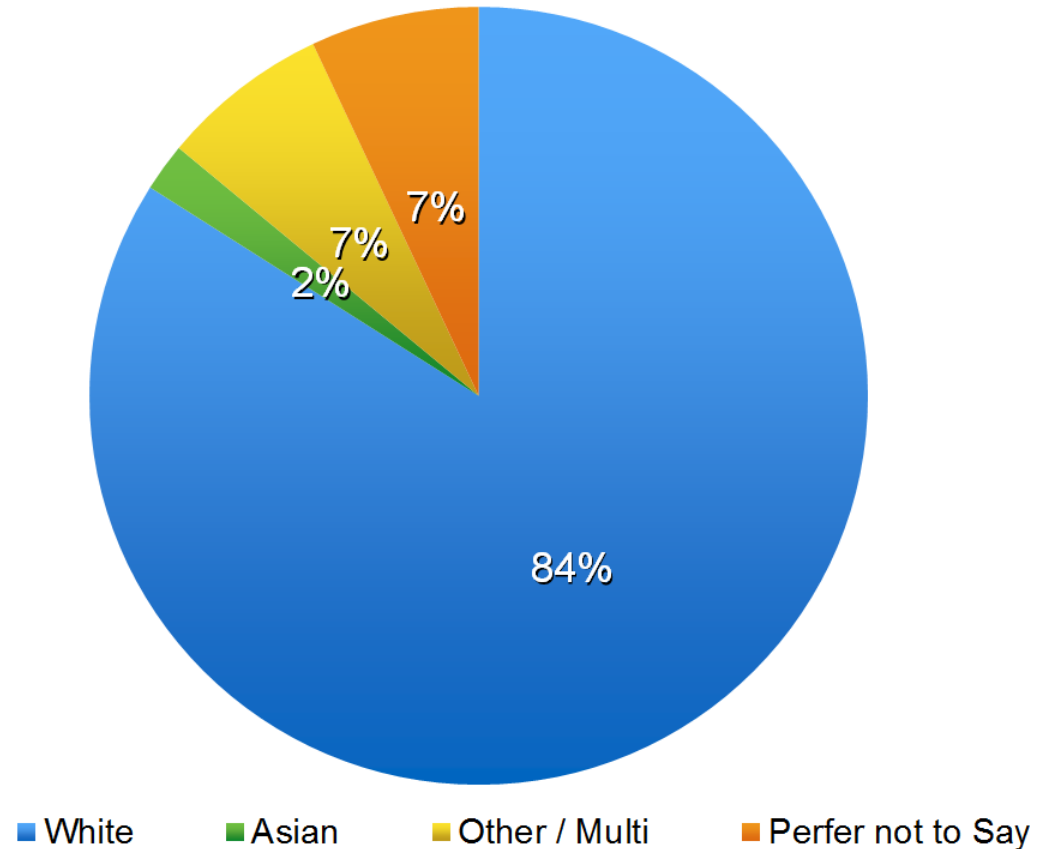




San Luis Obispo Open Space Survey

*Matches Census
Statistics for City but
More White than
County*

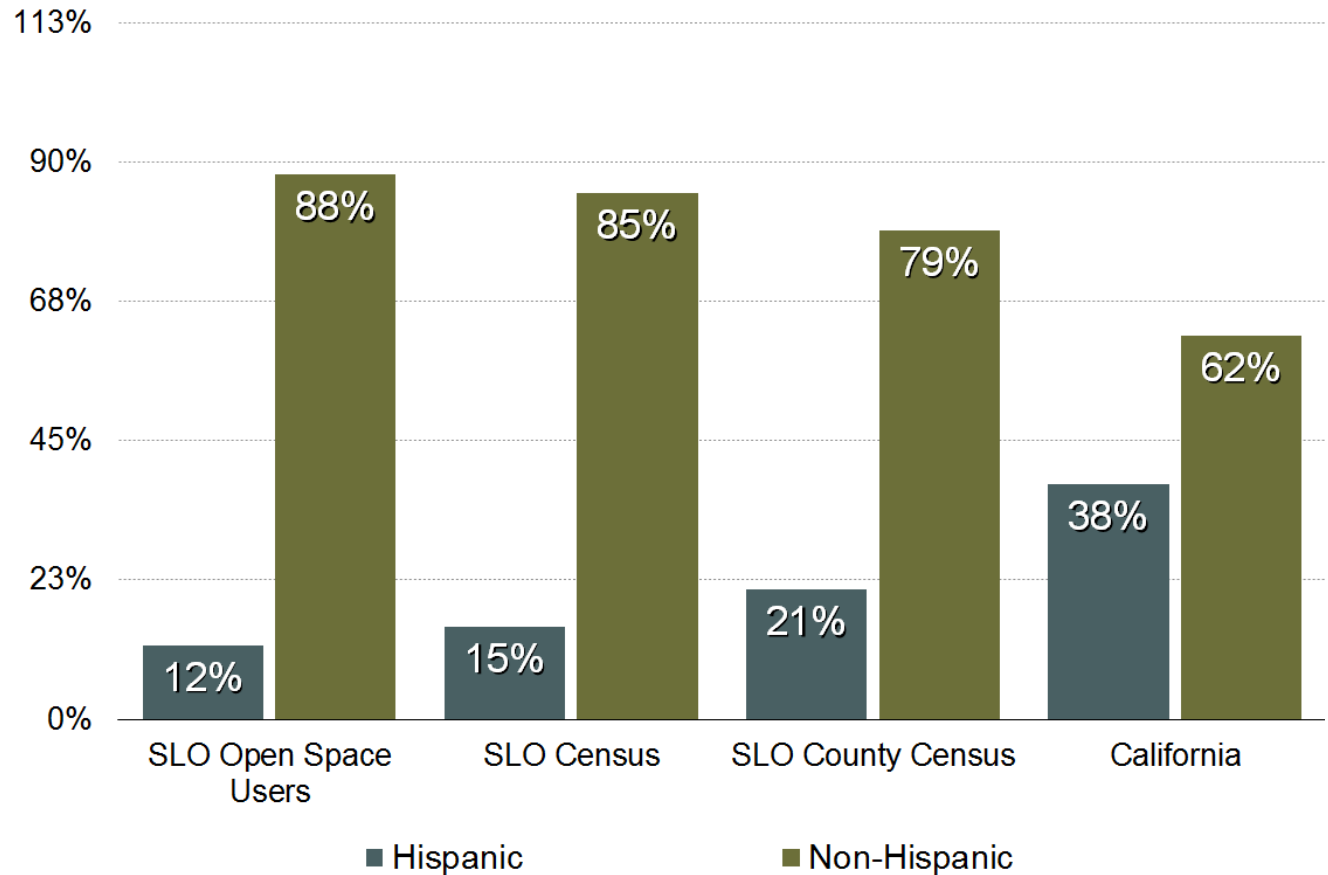
Race of Users





San Luis Obispo Open Space Survey

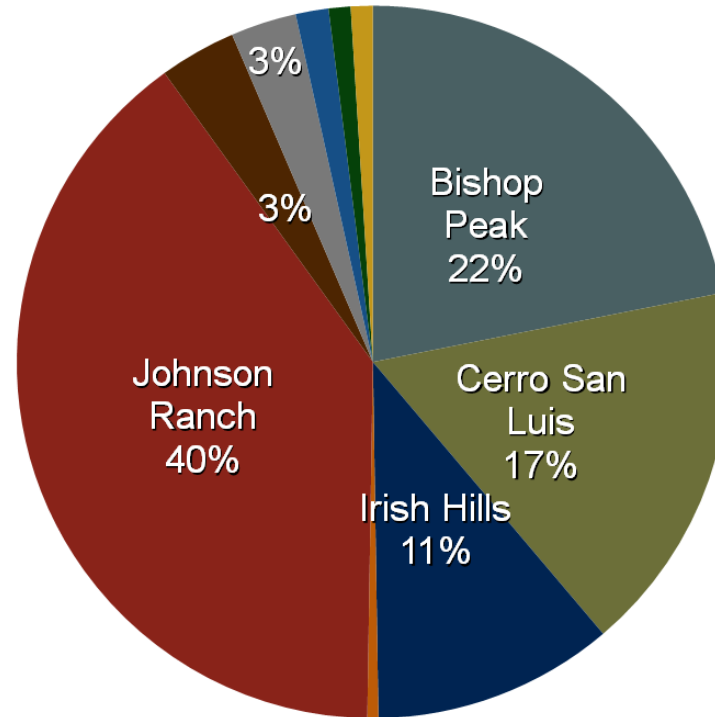
Hispanic Users vs. US Census (2010)





San Luis Obispo Open Space Survey

Most Used Open Spaces



- Bishop Peak
- Cerro San Luis
- Irish Hills
- Islay Hill
- Johnson Ranch
- Laguna Lake
- Reservoir Canyon
- South Hills
- Stenner Springs
- Terrace Hill

CAL POLY
SAN LUIS OBISPO

Open Space Survey Major Findings

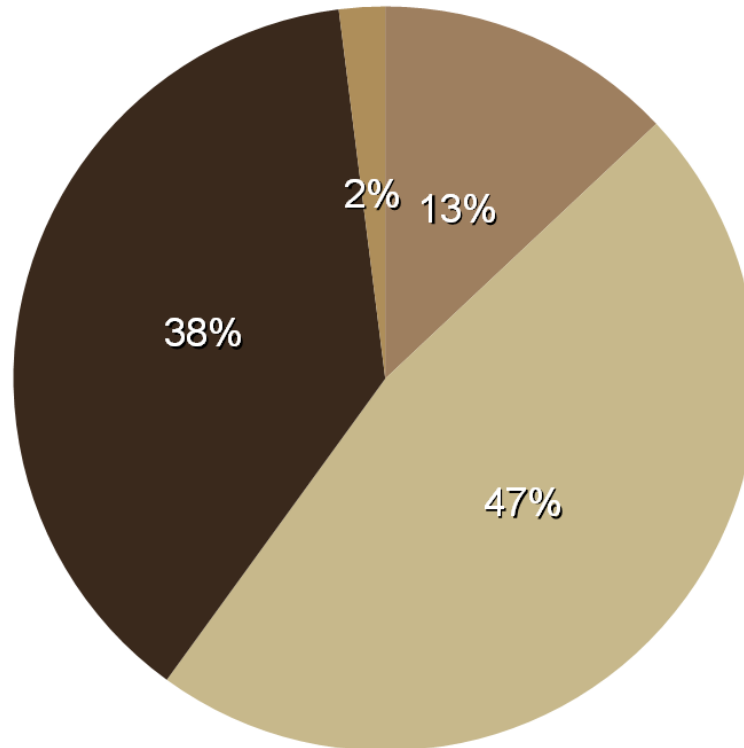


CITY OF SAN LUIS OBISPO



San Luis Obispo Open Space Survey

Frequency of Open Space Use



*40% of Users Access
SLO Open Spaces
Multiple Times Per Week*

■ Once Per Month
■ Multiple Times Per Week

■ 2-5 Times Per Month
■ Everyday

CAL POLY
SAN LUIS OBISPO

Open Space Survey Major Findings

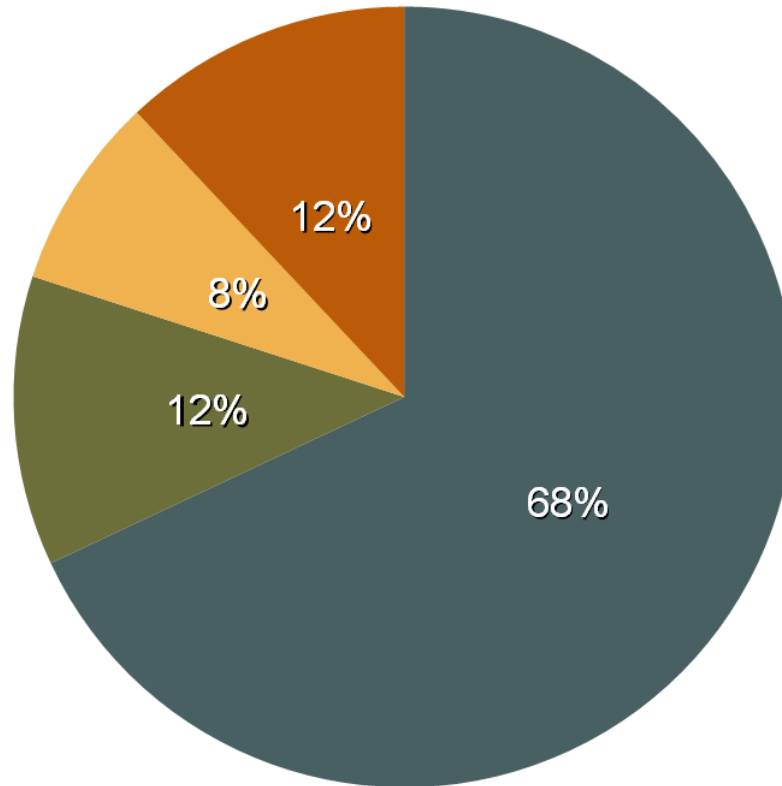


CITY OF SAN LUIS OBISPO



San Luis Obispo Open Space Survey

Accessing Open Space



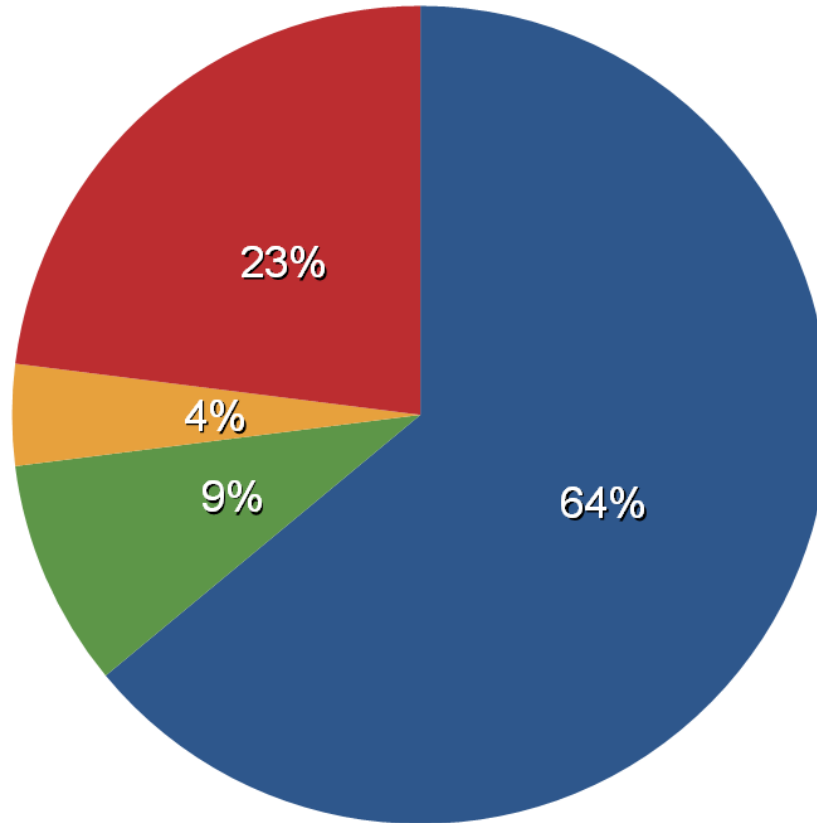
*SLO LUCE Targets a 20%
Bicycle Mode Split for
the Future*

■ Drive ■ Walk ■ Bike ■ Other / Multiple



San Luis Obispo Open Space Survey

Getting Information on Open Spaces



■ Word of Mouth ■ City Website ■ Guide Book ■ Other / Various

CAL POLY
SAN LUIS OBISPO

Open Space Survey Major Findings



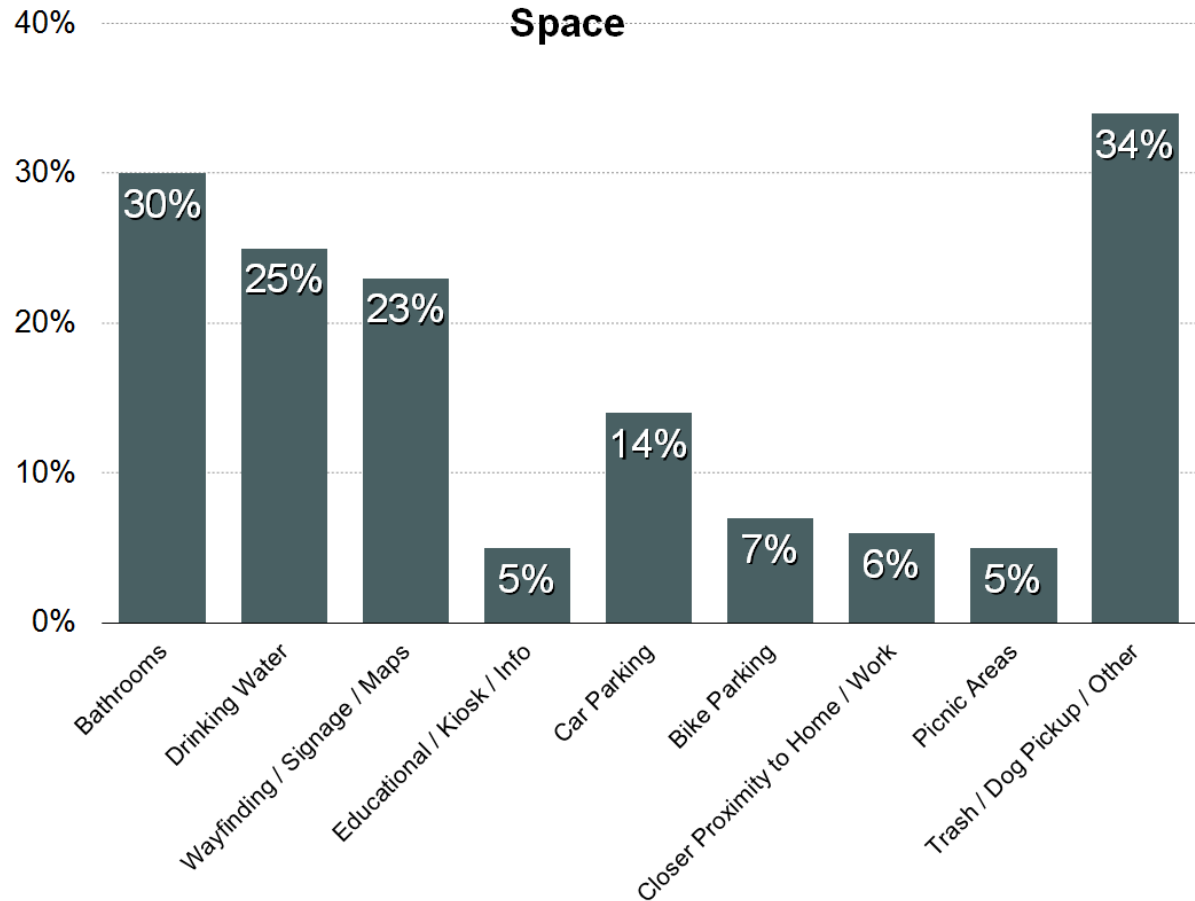
CITY OF SAN LUIS OBISPO



San Luis Obispo Open Space Survey

Note: There is also a portion of respondents that state that they prefer no improvements or development in City Open Space

Factors that Might Improve Experience of Open Space



CAL POLY
SAN LUIS OBISPO

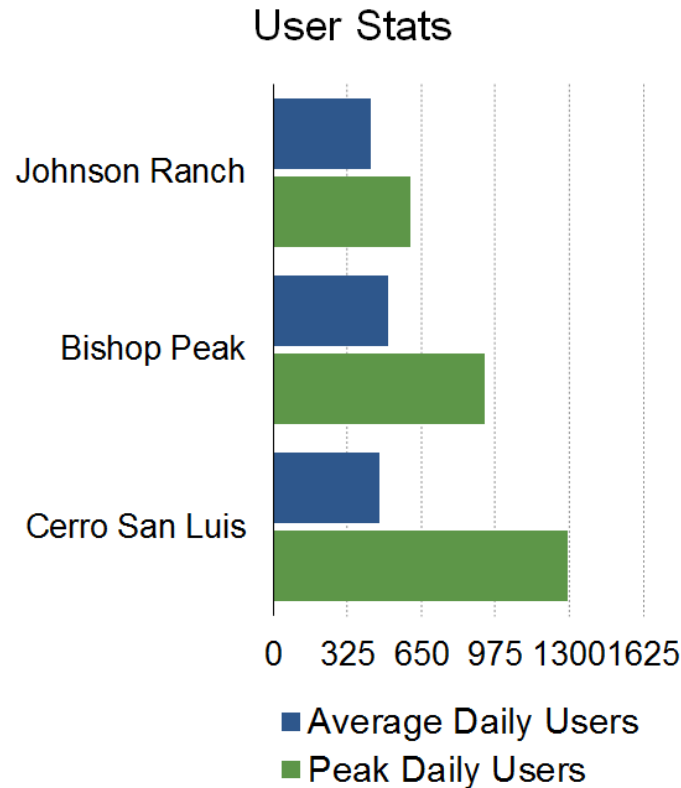
Open Space Survey Major Findings



CITY OF SAN LUIS OBISPO



San Luis Obispo Open Space Survey



Assuming 500 users per day one could extrapolate that open spaces like Johnson Ranch, Bishop Peak & Cerro San Luis serve ~3500 individuals per week (182,000 per year).

CAL POLY
SAN LUIS OBISPO

Open Space Survey Major Findings



CITY OF SAN LUIS OBISPO



San Luis Obispo Open Space Survey

Trash / Pet Pickup (poop)

Educational Signage / Wayfinding Opportunities

- ❖ *Can reinforce conservation & land stewardship goals, as well as Open Space Regulations*
- ❖ *Can reinforce identity of open space as part of City of SLO*

Issues
Opportunities &
Recommendations

Parking / Transportation at Signature Open Spaces

- ❖ Parking supply / parking demand dilemma
- ❖ Potential for transportation alternatives – LUCE mode share split – “Transit to Trails”
- ❖ Direct users across all open spaces to relieve burden on those that are most used.

CAL POLY
SAN LUIS OBISPO

Open Space Survey Major Findings



CITY OF SAN LUIS OBISPO



San Luis Obispo Open Space Survey

Robert A. Hill

Natural Resources Manager

(805) 781-7211 or rhill@slocity.org

City of San Luis Obispo

City Administration

990 Palm Street

San Luis Obispo, CA

<https://www.slocity.org/naturalresources/index.asp>



Dr. William Riggs

Assistant Professor, City & Regional Planning

(805) 756-6317 or wriggs@calpoly.edu

California Polytechnic State University

1 Grand Avenue

San Luis Obispo, CA 93407

<http://www.planning.calpoly.edu/>

CAL POLY
SAN LUIS OBISPO



CITY OF SAN LUIS OBISPO