



**Western University**

---

**From the Selected Works of Tony Rupar**

---

2019

# Infantile-Onset Multisystem Neurologic, Endocrine, and Pancreatic Disease: Case and Review

Tony Rupar, *Western University*

Chitra Prasad

Andrea Andrade, *Western University*

Derek Debicki

Asuri N Prasad, et al.

# Infantile-Onset Multisystem Neurologic, Endocrine, and Pancreatic Disease: Case and Review

Christine Le, Asuri N. Prasad<sup>1</sup>, C. Anthony Rupar, Derek Debicki, Andrea Andrade, Chitra Prasad

**ABSTRACT:** We report three brothers born to consanguineous parents of Syrian descent, with a homozygous novel c.324G>A (p.W108\*) mutation in *PTRH2* that encodes peptidyl-tRNA hydrolase 2, causing infantile-onset multisystem neurologic, endocrine, and pancreatic disease (IMNEPD). We describe the core clinical features of postnatal microcephaly, motor and language delay with regression, ataxia, and hearing loss. Additional features include epileptic seizures, pancreatic insufficiency, and peripheral neuropathy. Clinical phenotyping enabled a targeted approach to the investigation and identification of a novel homozygous nonsense mutation in *PTRH2*, c.324G>A (p.W108\*). We compare our patients with those recently described and review the current literature for IMNEPD.

**RÉSUMÉ:** **Compte-rendu d'un cas de maladie infantile multi-systémique neurologique-endocrinienne-pancréatique.** Nous voulons nous pencher ici sur le cas de trois frères nés de parents consanguins d'origine syrienne et donnant à voir une mutation homozygote c.324G>A (p.W108\*) du gène *PTRH2* rarement vue. Ce gène est responsable d'encoder la protéine peptidyl-tRNA hydrolase 2. Un encodage déficient causera chez des enfants une maladie multi-systémique neurologique-endocrinienne-pancréatique. Dans cet article, nous entendons décrire les aspects cliniques principaux de la microcéphalie postnatale, à savoir des délais et des régressions sur le plan du développement moteur et langagier mais aussi de l'ataxie et de la perte auditive. D'autres aspects cliniques sont également abordés, notamment des crises épileptiques, l'insuffisance pancréatique et une neuropathie périphérique. À cet égard, des outils de phénotypage clinique nous ont permis de compter sur une approche de recherche et d'identification ciblée en ce qui regarde la mutation non-sens évoquée ci-dessus. Enfin, nous voulons comparer nos jeunes patients à d'autres récemment décrits et passer en revue la littérature scientifique actuelle qui porte sur la maladie infantile multi-systémique neurologique-endocrinienne-pancréatique.

**Keywords:** Postnatal microcephaly, Neuroendocrinopathy, Developmental delay, Ataxia, Hearing loss and peripheral neuropathy

doi:10.1017/cjn.2019.35

Can J Neurol Sci. 2019; 46: 459–463

Infantile-onset multisystem neurologic, endocrine, and pancreatic disease (IMNEPD) has recently been described.<sup>1,2</sup> The index case involved two patients from a consanguineous family of Yazidian–Turkish descent with a homozygous nonsense mutation in *PTRH2*. The core clinical features include postnatal microcephaly, delayed speech and motor development with regression, intellectual disability, sensorineural hearing loss, progressive ataxia, cerebellar atrophy, peripheral sensorimotor neuropathy, and dysfunction of the pancreas, thyroid, and liver of varying severity.<sup>1,2,3</sup>

Herein, we report three IMNEPD patients from a consanguineous family of Syrian descent. The three affected children (patient III-6, patient III-3, patient III-2; Figure 1) are from healthy parents who are first cousins. There are three unaffected children in the family who are 18 months, 23 years, and 26 years old (Figure 1).

Patient III-6 is 27 years old and is most severely affected. He had a hypoxic birth event. He first spoke at the age of 4, and regressed within 1 year to nonspecific vocalizations. He lost independent ambulation at 14 months as he developed progressive truncal and limb ataxia. He has distal, more than proximal, weakness and is wheelchair-dependent. He has flexion contractures of his hands and feet, and high foot arches. At 7 years, he developed generalized tonic clonic and myoclonic seizures. He has postnatal microcephaly, mild bilateral ptosis, exotropia, mild facial

dysmorphism with hypertelorism, and a thin upper lip vermilion (Figure 2). He was diagnosed with insulin-dependent diabetes mellitus (IDDM) and microcytic anemia due to iron deficiency at age 18 and seronegative spondyloarthropathy at age 26.

Patient III-3 is 17 years old. He had an uncomplicated birth, but displayed postnatal microcephaly, motor and language regression at 1 year. He has progressive truncal and limb ataxia and a broad-based, high-steppage gait and requires a walker. He has a limited vocabulary of less than five words. He has mild bilateral ptosis, global symmetric hypotonia, hyporeflexia with distal muscle wasting that is more significant in the upper than lower extremities. He was diagnosed with IDDM at age 16 and has suspected myoclonic seizures.

Patient III-2 is 7 years old and has postnatal microcephaly with developmental regression. He acquired a limited vocabulary

From the Departments of Clinical Neurological Sciences (CL, ANP, DD, AA) and Pediatrics (ANP, CP, CAR, AA); Children's Health Research Institute (ANP, CP, CAR); Pathology and Laboratory Medicine and Biochemistry (CAR); Western University, London, Ontario, Canada (CL, ANP, CAR, DD, AA, CP).

RECEIVED JULY 24, 2018. FINAL REVISIONS SUBMITTED MARCH 14, 2019. DATE OF ACCEPTANCE MARCH 16, 2019.

Correspondence to: Chitra Prasad, Genetics, Metabolism and Paediatrics, Children's Hospital, London Health Sciences Centre, 800 Commissioners Road East, London, Ontario, N6C2V5, Canada. Email: [Chitra.Prasad@lhsc.on.ca](mailto:Chitra.Prasad@lhsc.on.ca)

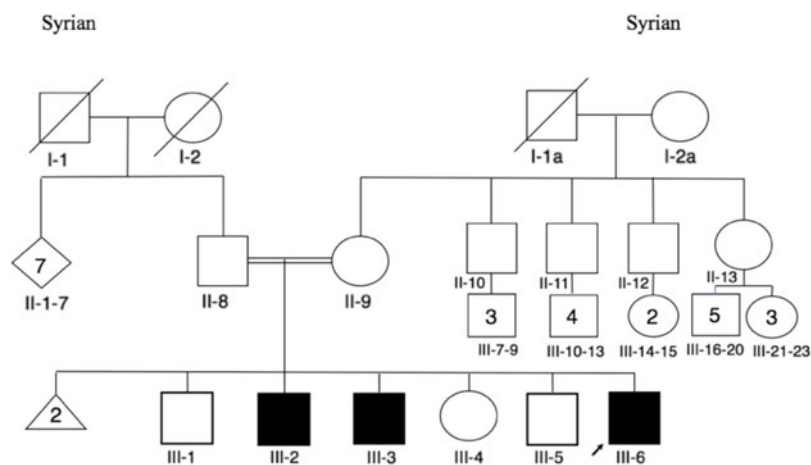


Figure 1: Pedigree.



Figure 2: Patient III-6 with microcephaly, mild bilateral ptosis, exotropia, hypertelorism, and thin upper lip vermillion.

at the age of 2. He is treated with clonidine for hyperactivity. He could walk independently by the age of 3 and has a broad-based gait with mild truncal ataxia and hip girdle weakness with no muscle wasting. He is currently being investigated for nocturnal frontal lobe seizures and myoclonus. He has an undescended right testis. He does not have pancreatic dysfunction, thyroid, or liver disease.

Initial investigations for patient III-6 revealed an elevated random glucose 12 mmol/L (normal 3.4–11) but normal glycated hemoglobin, liver enzymes, and homocysteine levels. Serum biotinidase assay, urine organic acids, plasma and urine amino acids, and serum cholesterol were all within normal limits, while X-linked adrenoleukodystrophy testing was excluded as the plasma very-long-chain fatty acids were normal. Hepatitis B and C serology was negative. A nerve conduction study was

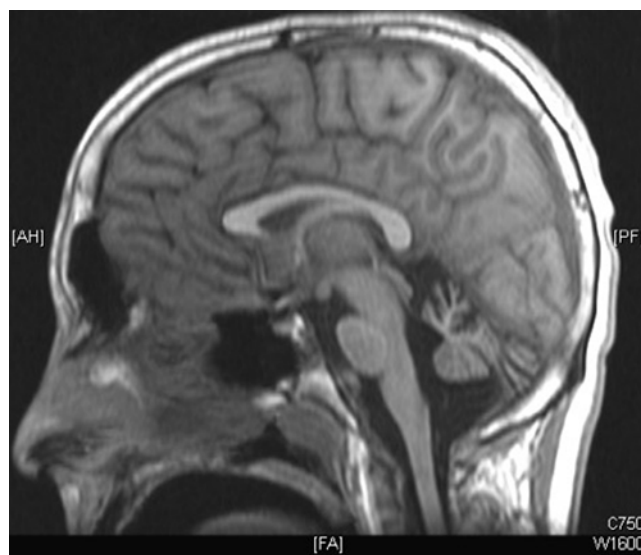


Figure 3: MRI brain T1 sagittal; prominent cerebellar atrophy.

performed and revealed a sensorimotor axonal and demyelinating polyneuropathy. Electromyography was not consistent with a primary myopathy.

Cranial magnetic resonance imaging (MRI) revealed symmetrical, bilateral cerebellar atrophy in the two eldest affected patients (Figure 3). The brainstem, corpus callosum, and cerebral cortex were within normal limits. Cranial MRI in the youngest affected sibling was normal. Electroencephalograms (EEG) for patients III-2 and III-3 demonstrated background slowing with increased asynchronous delta activity consistent with diffuse encephalopathy without epileptiform activity.

The history of consanguinity suggested an autosomal recessive pattern of inheritance. In the context of middle eastern background, shared clinical features, and multisystemic involvement, a causative mutation in the mitochondrial protein PTRH2 was suspected. All exons of *PTRH2* were PCR-amplified and sequenced bidirectionally. All three brothers had a homozygous nonsense mutation in *PTRH2*, c.324G>A (p.W108\*). This G-to-A mutation results in a premature stop at codon p.108, truncating the protein by 71 amino acids and removing most of

**Table 1: Clinical characteristics of patients with IMNEPD**

Category	Feature	Current case series			References			
		III-6	III-3	III-2	Hu et al. (2014)	Picker-Minh et al. (2016)	Sharkia et al. (2017)	Alazami et al. (2015)
Genetic mutation		Homozygous nonsense substitution c.324G>A p.W108*			Homozygous nonsense deletion c.269_270CT p.A90Gfs	Homozygous missense c.254A>C p.Q85P	Homozygous missense c.254A>C p.Q85P	Homozygous missense c.254A>C p.Q85P
Age at last assessment		27	17	7				
Ethnicity		Syrian	Syrian	Syrian	Yazidian–Turkish	Tunisian, Saudi Arabian	Israeli, Arab	Saudi Arabian
Birth	Hypoxia	+	–	–	–	–	–	–
Growth	Postnatal growth regression (age at onset)	+ (14 m)	+ (12 m)	+ (11 m)	+	±	–	–
Head	Postnatal microcephaly	+	+	+	+	–	+	–
	Facial dysmorphism	+	+	–	+	+	+	–
	Hearing impairment	+	–	–	+	+	+	+
Neurologic	Hypotonia	+	+	–	+	±	+	–
	Motor delay	+	+	+	+	+	+	+
	Distal predominant weakness	+	+	–	+	+	+	+
	Intellectual delay	+	+	+	+	+	Language delay only	+
	Ataxia, limb ± truncal	+	+	+	±	±	–	+
	Cerebellar atrophy/hypoplasia	+	+	–	+	±	–	NA
	Seizures (age at onset)	+	+ (2.5 y)	+ (2 y)	+	–	–	–
Skeletal	Hand deformity	+	–	–	+	±	+	–
	Feet deformity	+	–	–	+	±	+	NA
	Other	+	–	–	+	–	–	–
Liver	Hepatomegaly	–	–	–	+	±	–	–
Genitourinary	GU abnormality: undescended testicle*, shawl scrotum	–	–	*	+	NA	NA	*
Endocrine	Hypothyroid	–	–	–	+	–	–	–
	Diabetes mellitus	+	+	–	+	±	–	–
	Delayed puberty	–	–	–	NA	NA	+	–

the amino acids that participate in the enzymatic active site.<sup>5</sup> The c.324G>A (p.W108\*) mutation is not listed in the human Gene Mutation Database Cardiff (NCBI dbSNP, 1000 Genomes, Exome Variant Server or ClinVar). This very rare variant has been identified with an allele frequency of 0.000004063 in the gnomAD database with one heterozygous individual in 246114 alleles (all databases accessed January 22, 2018). Clinical phenotyping was used exclusively to focus the genetic analysis. We had a high index of suspicion for IMNEPD, and we have confirmed the same pathogenic variant in all three siblings and thus have not pursued whole-exome sequencing. To our knowledge, there is no relationship to any other known patients; however, we recognize that given the consanguinity there is a possibility for more than one autosomal recessive condition to affect this family.

*PTRH2* (peptidyl-tRNA hydrolase 2) is a highly conserved mitochondrial protein encoded on chromosome 17. The substrates of *PTRH2* may be peptidyl-tRNAs that dissociate from ribosomes during incomplete protein synthesis.<sup>1</sup> During protein translation, a significant proportion of the ribosomes that initiate the mRNA readout do not reach the stop codon. Peptidyl-tRNA molecules may dissociate from the mRNA template and terminate the process prematurely.<sup>1,2,3,4</sup> In addition, *PTRH2* also acts as a phosphoprotein that regulates NFκB and ERK signaling and participates in integrin-mediated apoptotic signaling and survival. When a cell attaches to the extracellular matrix, *PTRH2* interacts with focal adhesion kinase and activates the PI3K–AKT–NFκB pathway to enhance attachment.<sup>1,5</sup> Upon loss of cell attachment, *PTRH2* is phosphorylated, released into the cytosol, and combines with transcriptional regulator amino-terminal enhancer of split, which triggers apoptosis or anoikis.<sup>1,5</sup> *PTRH2* is expressed in the neurons of the neocortex, basal ganglia, hippocampus and cerebellum, testis, prostate, skeletal muscle, liver, and, to a lesser extent, in the heart, spleen, placenta, and colon.<sup>1</sup>

Murine models of homozygous *Ptrh2*-mutant mice developed postnatal dystrophy and died within 2 weeks of life.<sup>1</sup> *Ptrh2*-knockout mice were normal at birth, but demonstrated progressive decrease in length and weight, muscle wasting, ataxia, and reduced brain weight with cerebellar atrophy.<sup>1</sup> These mice also demonstrated exocrine pancreatic insufficiency.<sup>1</sup>

A review of the literature was conducted using search terms of IMNEPD in OMIM and PubMed. Consistent with previous descriptions, our three patients displayed the core features of IMNEPD, including postnatal microcephaly, motor and speech delay, intellectual disability, ataxia, peripheral neuropathy, and seizures with varying severity (Table 1). The two older brothers also have pancreatic insufficiency. None of our patients have evidence of thyroid or liver dysfunction (Table 1). To date, patients with IMNEPD have been described with variable dysmorphisms, including midface hypoplasia, hypertelorism, thin upper lip vermillion, proximally placed thumbs, and deformities of the fingers and toes.<sup>1,6</sup> Recently, a milder phenotypic variant characterized by mild microcephaly, peripheral sensorimotor neuropathy, sensorineural hearing loss, and delayed puberty was described in three sisters who shared a homozygous *PTRH2* missense mutation c.254A>C (p.Q85P).<sup>3</sup>

In our patients, we identified a novel, causal homozygous nonsense G-to-A mutation in *PTRH2* at nucleotide c.324. In review of the previously described mutations, it appears that nonsense mutations of *PTRH2*, which produce a truncated protein, may result in a more severe phenotype characterized by

prominent microcephaly, motor and speech delay, intellectual disability, cerebellar atrophy, and pancreatic dysfunction. With missense mutations, there is likely more preserved function in the altered *PTRH2* leading to a milder phenotype. In the present family, however, we observed phenotypic variability between siblings with the same mutation suggesting variable expressivity for *PTRH2* mutations. Future studies will help to determine the degree to which puberty is affected in this disorder and help to validate the observed phenotypic variants of *PTRH2* mutations.

In patients with suspected IMNEPD, the multisystemic features should yield a wide differential diagnosis, including mitochondrial disorders. Patients may have overlapping features with syndrome of short stature, microcephaly, and endocrine dysfunction; Johanson–Blizzard syndrome; progressive myoclonic epilepsies; spinocerebellar ataxias; or specific metabolic disorders.<sup>7,8,9</sup>

Initial investigations for patients with suspected IMNEPD should include complete blood count, biochemical assays for electrolytes, creatinine, urea, creatine kinase, thyroid-stimulating hormone, B12, glucose, glycosylated hemoglobin, lactate, liver function enzymes, ammonia, plasma amino acids, and urine organic acids. Additional testing may include nerve conduction study, electromyography, cranial MRI, and EEG. Genetic testing of the parents and siblings is important to determine the risk of recurrence and carrier status, and age-appropriate counselling would be necessary for all affected patients and siblings.

At present, there is no specific treatment for this condition; however, the related complications of this disorder can be addressed. In the context of seizures, valproic acid toxicity may occur given that IMNEPD is a mitochondrial cytopathy, and therefore, other antiepileptic medications should be used. We believe that patients would benefit from a collaborative care plan with multidisciplinary physicians and allied health practitioners.

#### ACKNOWLEDGEMENTS

Written informed consent was obtained for the genetic analysis, publication of data, and imaging. We are grateful to Wendy McCaul, BSc, for performing mutation analysis, and to Melanie Napier (genetic counsellor) for assistance with genetic counselling.

#### ABBREVIATIONS

FAK, focal adhesion kinase; Pi3K, phosphatidylinositol 3-kinase protein kinase B; AKT, protein kinase B; NFκB, nuclear factor kappa light chain enhancer of activated B cells; ERK, extracellular signal-related kinase; mTOR, mammalian target of rapamycin; pS6, phosphorylated protein S6; ESR, erythrocyte sedimentation rate; CRP, C-reactive protein, POLG, DNA polymerase subunit gamma.

#### ELECTRONIC DATABASE INFORMATION

URLs used in the preparation of this article are Locus Link, National Center for Biotechnology Information, National Library of Medicine (Bethesda, MD), 1999. <https://www.ncbi.nlm.nih.gov/pubmed>

Online Mendelian Inheritance in Man, OMIM™, Center for Medical Genetics, Johns Hopkins University (Baltimore, MD) and National Center for Biotechnology Information, National Library of Medicine (Bethesda, MD), 1999. <http://www.ncbi.nlm.nih.gov/omim/>

**DISCLOSURES**

The authors have no conflicts of interest to declare.

**STATEMENT OF AUTHORSHIP**

All author contributed equally to the manuscript.

**REFERENCES**

1. Hu H, Matter M, Issa-Jahns L, et al. Mutations in PTRH2 cause novel infantile-onset multisystem disease with intellectual disability, microcephaly, progressive ataxia and muscle weakness. *Ann Clin Transl Neurol.* 2014;1(12):1024–35.
2. Picker-Minh S, Mignot C, Doummar D, et al. Phenotype variability of infantile-onset multisystem neurologic, endocrine, and pancreatic disease IMNEPD. *Orphanet J Rare Dis.* 2016;11(52):1–7.
3. Sharkia R, Shaley S, Zalan A, et al. Homozygous mutation in PTRH2 gene causes progressive sensorineural deafness and peripheral neuropathy. *Am J Med Genet.* 2017;173(4):1051–55.
4. De Pereda JM, Waas WF, Jan Y, Ruoslahti E, Schimmel P, Pascual J. Crystal structure of a human peptidyl-tRNA hydrolase reveals a new fold and suggests basis for a bifunctional activity. *J Biol Chem.* 2004;279(9):8111–5.
5. Jan Y, Matter M, Pai JT, et al. A mitochondrial protein, Bit1, mediates apoptosis regulated by integrins and groucho/TLE corepressors. *Cell.* 2014;116(5):751–62.
6. Alazami A, Patel N, Monies DM, et al. Accelerating novel candidate gene discovery in neurogenic disorders via whole-exome sequencing of prescreened multiplex consanguineous families. *Cell Rep.* 2015;10:148–61.
7. Hudson G, Chinnery PF. Mitochondrial DNA polymerase-gamma and human disease. *Hum Mol Genet.* 2006;15(2):R224–252.
8. Cohen BH, Chinnery PF, Copeland WC. POLG-related disorders. 2010 Mar 16 [Updated 2014 Dec 18]. In: Adam MP, Ardinger HH, Pagon RA, et al., editors. *GeneReviews*<sup>®</sup> [Internet]. Seattle, WA: University of Washington, Seattle; 1993–2018. Available at: <https://www.ncbi.nlm.nih.gov/books/NBK26471/>
9. de Bruin C, Mericq V, Andrew SF, et al. An XRCC4 splice mutation associated with severe short stature, gonadal failure, and early-onset metabolic syndrome. *J Clin Endocrinol Metab.* 2015;100: E789–98.