



St. Catherine University

From the Selected Works of Meghan Mason, PhD

Summer August, 2020

How Do Healthcare Providers Screen Children and Families for Housing Instability? A Literature Review

Grace Anne Ludvik, *St. Catherine University*
Meghan R Mason



Available at: <https://works.bepress.com/meghan-mason/3/>

How Do Healthcare Providers Screen Children and Families for Housing Instability? A Literature Review Summer Scholars 2020

Grace Anne Ludvik
Dr. Meghan Mason



ST. CATHERINE UNIVERSITY

Background

- As of 2018, 34% of families in urban settings were experiencing housing instability (Sandel et al., 2018)
- Effects of housing instability include:
 - Poor physical and mental health
 - Delays in seeking medical care
 - Higher incidences of child hospitalizations
 - Higher odds of poor health in children
 - Higher odds of poor health for caregivers, typically mothers
- No recommended screening protocols exist for housing status, specifically for children and families

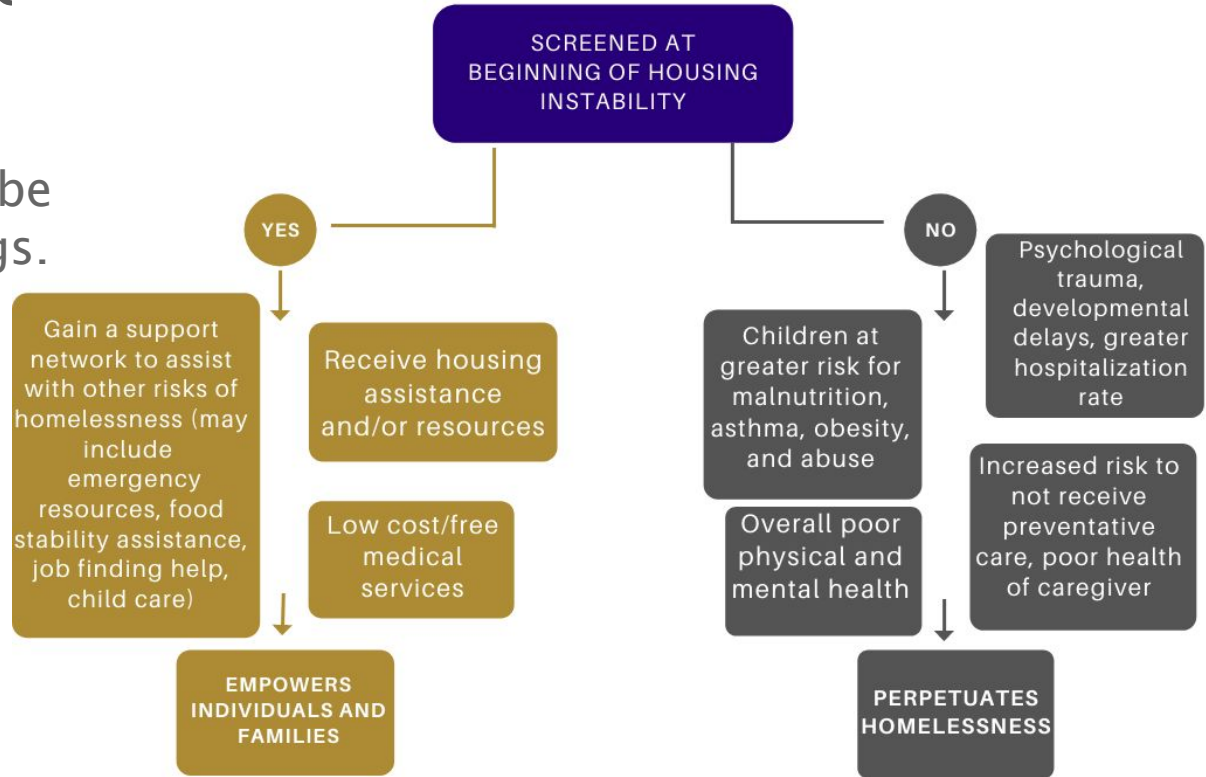
Background

Project done in collaboration with The National Network to End Family Homelessness Health Committee

- An initiative of The Bassuk Center on Homelessness and Vulnerable Children and Youth
- *“The National Network connects service providers in all 50 states, bringing promising practices and evidence-based programs to every community where people are experiencing homelessness.”* (About the National Network)
- Requested the creation of universal housing instability screening tool and fact sheet for clinical use

Research Objective

- To create a universal screening tool for housing instability to be used in clinical settings.

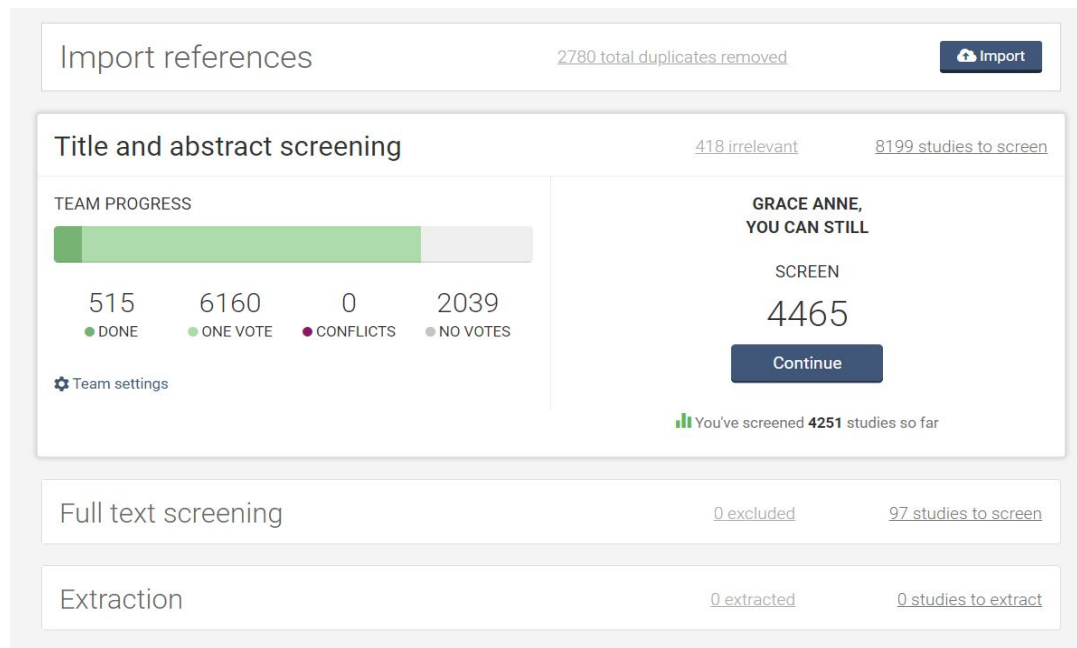


Literature Review

Database	Search Terms	Articles Retrieved
Pubmed	("Homeless Persons"[Mesh] OR "Housing"[Mesh] OR homeless OR "precariously housed" OR "housed precariously" OR unsheltered OR "housing insecure" OR "insecure housing" OR "doubled up" OR "doubling up" OR "unstable housing" OR "housing instability" OR "housing unstable" OR "residential mobility" OR "experiencing homelessness") AND ("Surveys and Questionnaires"[Mesh] OR survey OR questionnaire OR screening OR intake) AND (United states of america OR Usa OR States OR Us OR The united states OR United states)	3,452
CINAHL	(MM "Housing+" OR MM "Homeless Persons+" OR "Precariously housed" OR "housed precariously" OR "unsheltered homeless" OR "residential mobility" OR "experiencing homelessness" OR "homeless experience" OR "housing insecure" OR "insecure housing" OR "unstable housing" OR "housing unstable" OR "doubled up" OR "doubling up" AND (surveys OR questionnaire OR intake OR screening))	4,139
Psychinfo	((("Homeless Persons" OR "Person homeless" OR "Persons homeless" OR homelessness OR "Street people" OR "people, street" OR Housing OR homeless OR "precariously housed" OR "housed precariously" OR unsheltered OR "doubled up" OR "doubling up" OR "housing insecure" OR "insecure housing" OR "unstable housing" OR "housing unstable" OR "housing instability" OR "residential mobility" OR "experiencing homelessness") AND (survey OR questionnaire OR intake OR screening) AND ("United states of america" OR Usa OR States OR Us OR "The united states" OR "United states"))))	2,542
Socindex	((("Homeless Persons" OR "Person homeless" OR "Persons homeless" OR homelessness OR "Street people" OR "people, street" OR Housing OR homeless OR "precariously housed" OR "housed precariously" OR unsheltered OR "doubled up" OR "doubling up" OR "housing insecure" OR "insecure housing" OR "unstable housing" OR "housing unstable" OR "housing instability" OR "residential mobility" OR "experiencing homelessness") AND (survey OR questionnaire OR intake OR screening) AND ("United states of america" OR Usa OR States OR Us OR "The united states" OR "United states"))))	1,289
Google Scholar	(Housing OR "Homeless Persons" OR "Precariously housed" OR unsheltered OR "housing insecurity" OR "unstable housing") AND (surveys OR questionnaire OR intake) AND (surveys OR questionnaire OR intake) AND ("United states of america" OR "united states")	18,600 retrieved, 1,000 used (1st 10 pages)

Literature Review

- Produced 8,199 unique pieces of literature
- Abstracts were then uploaded into the screening tool, Covidence
- 2-stage review process
- Team of 2



Inclusion

- Mentions homelessness or similar phrase listed in abstract
- Suggests some type of screening for homelessness occurred in conducting the study
- Study based on US population
- Written in English
- Published between 2008-2020

Exclusion

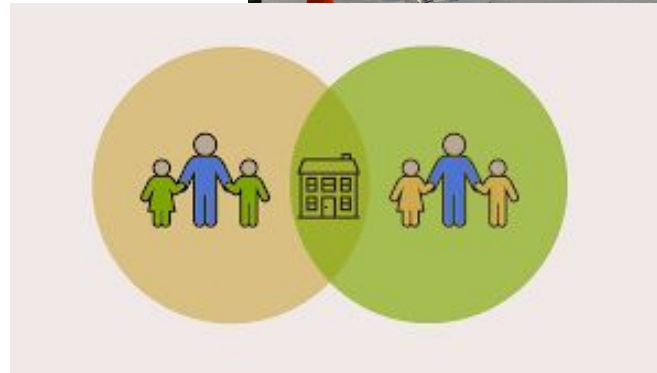
- Does not mention homelessness or a similar term in the abstract
- The study takes place outside of US
- Not written in English
- Study not published between 2008-2020
- Nonhuman studies

What is Housing Instability?

- Umbrella term that captures:
 - Homelessness
 - Housing insecurity
 - Unstable housing
 - Living doubled-up
 - Precarious housing
 - Residential mobility



[source](#)



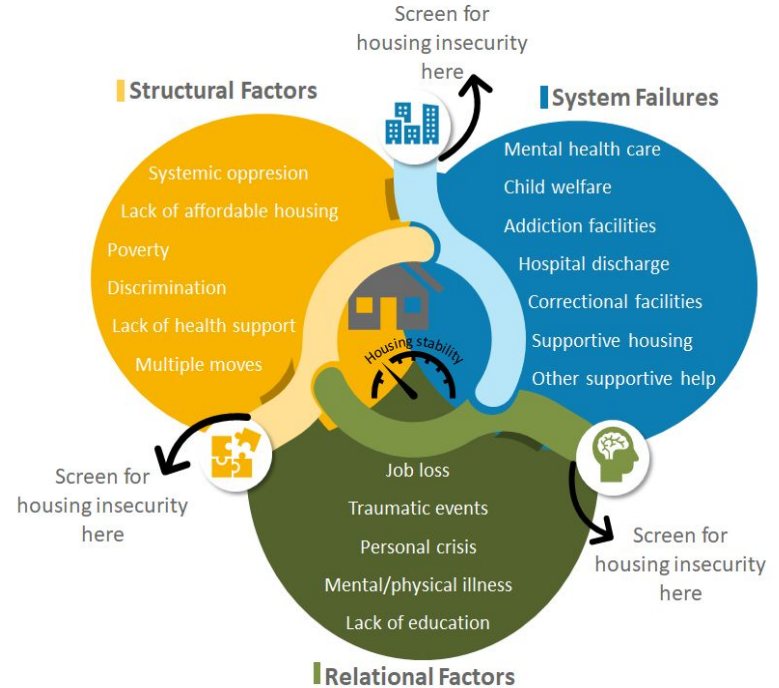
[source](#)

Preliminary Results

- People who are experiencing housing instability are documented in *quantity* within current literature
- There is an absence of screening tools that accurately assess children and families at *risk* for housing instability.
 - Many terms and definitions to talk about this population of people

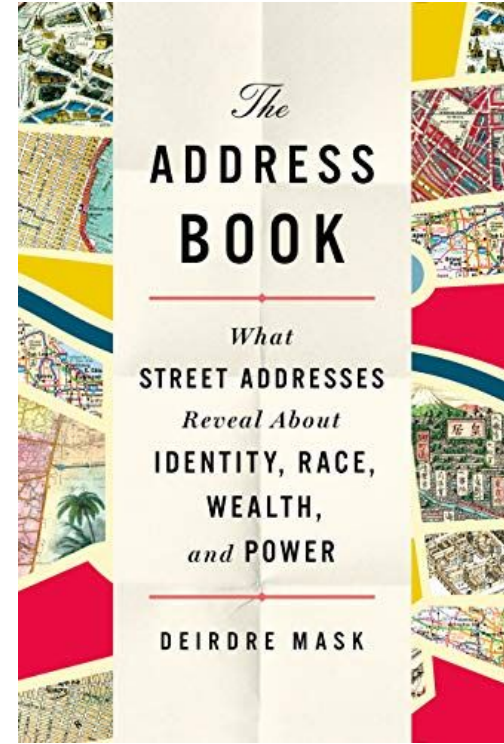
Next Steps

- Screened 4,251 of 8,199 articles so far
 - 97 accepted onto full text review
- Finish review
- Assess promising screening practices
- Draft screening tool for clinical use
- Draft of fact sheet



Book Club: *The Address Book* by Deirdre Mask

- In collaboration with Karisa Johnson, Marina Gorsuch, Sia Xiong
- “In books, we read words; in cities, we read street names and house numbers. Before they addressed houses, governments were blind to who their people were. House numbers gave them eyes” pg. 100



Collaborators and Acknowledgements

- **Meghan R. Mason, PhD, MPH** – St. Catherine University
- **Marvin So, MPH, CHES** – National Network to End Family Homelessness / Bassuk Center
- **Christine Ma, MD** – University of California, San Francisco
- **Jacki Hart, MD** – National Network to End Family Homelessness / Bassuk Center
- **Avik Chatterjee, MD, MPH** – Harvard University
- **Sia Xiong** – St. Catherine University

This project was funded by a grant to St. Catherine University from the GHR Foundation, and through the St. Catherine University Summer Scholars program.

Citations

About the National Network. (n.d.). Retrieved July 30, 2020, from <https://bassukcenter.org/national-network/>

Briggs, M. A., Granado-Villar, D. C., Gitterman, B. A., Brown, J. M., Chilton, L. A., Cotton, W.

H., ... & Paz-Soldan, G. J. (2013). Providing care for children and adolescents facing homelessness and housing insecurity. *Pediatrics*, 131(6), 1206-1210.

Sandel, M., Sheward, R., de Cuba, S. E., Coleman, S. M., Frank, D. A., Chilton, M., ... & Ochoa,

E. (2018). Unstable Housing and Caregiver and Child Health in Renter Families. *Pediatrics*, e20172199.

Stahre, M., VanEenwyk, J., Siegel, P., & Njai, R. (2015). Peer Reviewed: Housing Insecurity and the Association With Health Outcomes and Unhealthy Behaviors, Washington State, 2011. Preventing chronic disease, 12.

Rentas, K.G., Buckley, L., Wiest, D. *et al.* (2019). Characteristics and behavioral health needs of patients with patterns of high hospital use: implications for primary care providers. *BMC Health Serv Res* 19, 81 (2019). <https://doi.org/10.1186/s12913-019-3894-7>