

Illinois Wesleyan University

From the Selected Works of Jonathan D Green

1992

Laudate Pueri (Jeremy's Book, Part IV)

Jonathan D Green, *Illinois Wesleyan University*

for Jeremy Nye Evens

Laudate Pueri

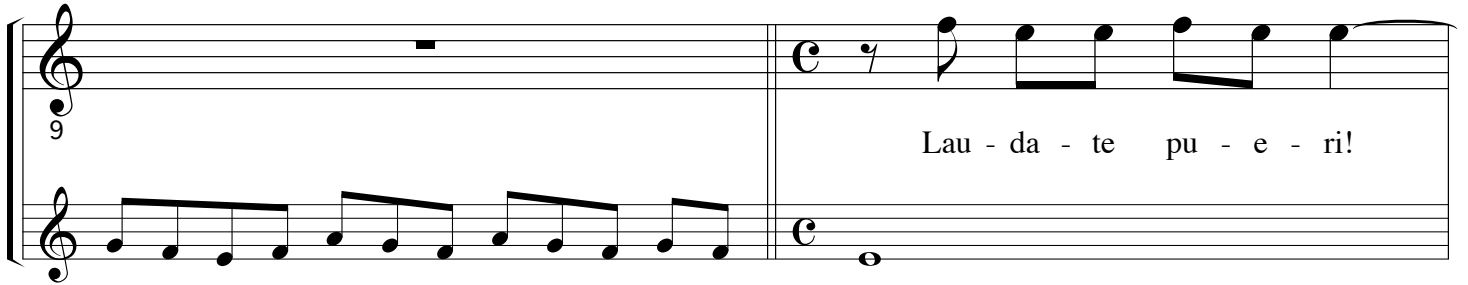
A



Al - le - lu - - - ia, - Al - le - lu - - - ia! -



Lau - da - te - - - pu - - - e - ri Do - mi - num - lau - da -



Lau - da - te pu - e - ri!

te!



O praise the LORD, ye chil - dren; praise the Name of the LORD.

14 Bles-sed be the name of the LORD from this time forth and for all ge-ne-ra -

Bles-sed be the name of the LORD from this time forth and for all ge-ne-ra -

8 Bles-sed be the name of the LORD from this time forth and for all ge-ne-ra -

14 Bles-sed be the name of the LORD from this time forth and for all ge-ne-rat -

17 tions. The LORD'S Name is prais - wor-thy from the ris - ing up of the sun

tions. Lau-da - te pu - e ri. from the ris - ing up of the sun

8 tions. Lau - da - te pu - e - ri. from the ris - ing

17 tions. Lau - da - te pu - e - ri. from the ris - ing

20 un - to its go - ing down. Praise the LORD, ye chil - dren.

un - to its go - ing down. Lau - da - te pu - e - ri.

up of the sun un - to its go - ing down.

20 up of the sun un - to its go - ing down.

23 The LORD is high a - bove all na - tions and his glo - ry a - bove the

The LORD is high a - bove all na - tions and his glo - ry a - bove the

26 hea - vens, a - bove the hea - vens.

hea - vens a - bove the hea - vens. a - bove the hea - vens.

Who is like the LORD our

26

Who is like

29 Lau - da - te pu - e - ri.

Lau - da - te pu - e - ri.

God, and yet be - holds the low - ly, who dwells so

29

the LORD our God, and yet be - holds the low - ly who

31

Lau - da - te pu - e - ri.

Lau - da - te pu - e - ri.

8 high, and yet be - holds the low - ly things that are in

31 dwells so high, and yet be - holds the low - ly

33

Lau - da - te pu - e - ri.

Lau - da - te pu - e - ri.

8 hea - ven and earth.

He takes the sim - ple out of the

33 things that are in hea - ven and earth!

35 and lifts the poor out of the ash - es;

and lifts the poor out of the ash - es;

dust, and lifts the poor out of the ash - es; That he may set them with

35 and lifts the poor out the ash-es;

38 Lau-da - te pu - e - ri. Who makes the bar - ren wo - man

Lau-da - te pu - e - ri. Who makes the bar - ren wo - man

the prin - ces, e - ven with the prin - ces of his peo - - - ple.

38 Lau-da - te pu - e - ri. Who makes the bar - ren wo - man

41 to dwell in her house the joy - ful mo - ther of child - ren. Lau - da - te pu - e - ri. Lau - da - te pu - e - ri.

44 Al - le - lu - ia, - Al - le - lu - ia! - Al - le - lu - ia, - Al - le - lu - ia! - Al - le - lu - ia, - Al - le - lu - ia! - Al - le - lu - ia! -