

University of Kentucky

From the Selected Works of Glen Mays

Spring April 7, 2014

The Public Health PBRN Program: tatus Update

Glen P Mays, *University of Kentucky*



Available at: https://works.bepress.com/glen_mays/146/

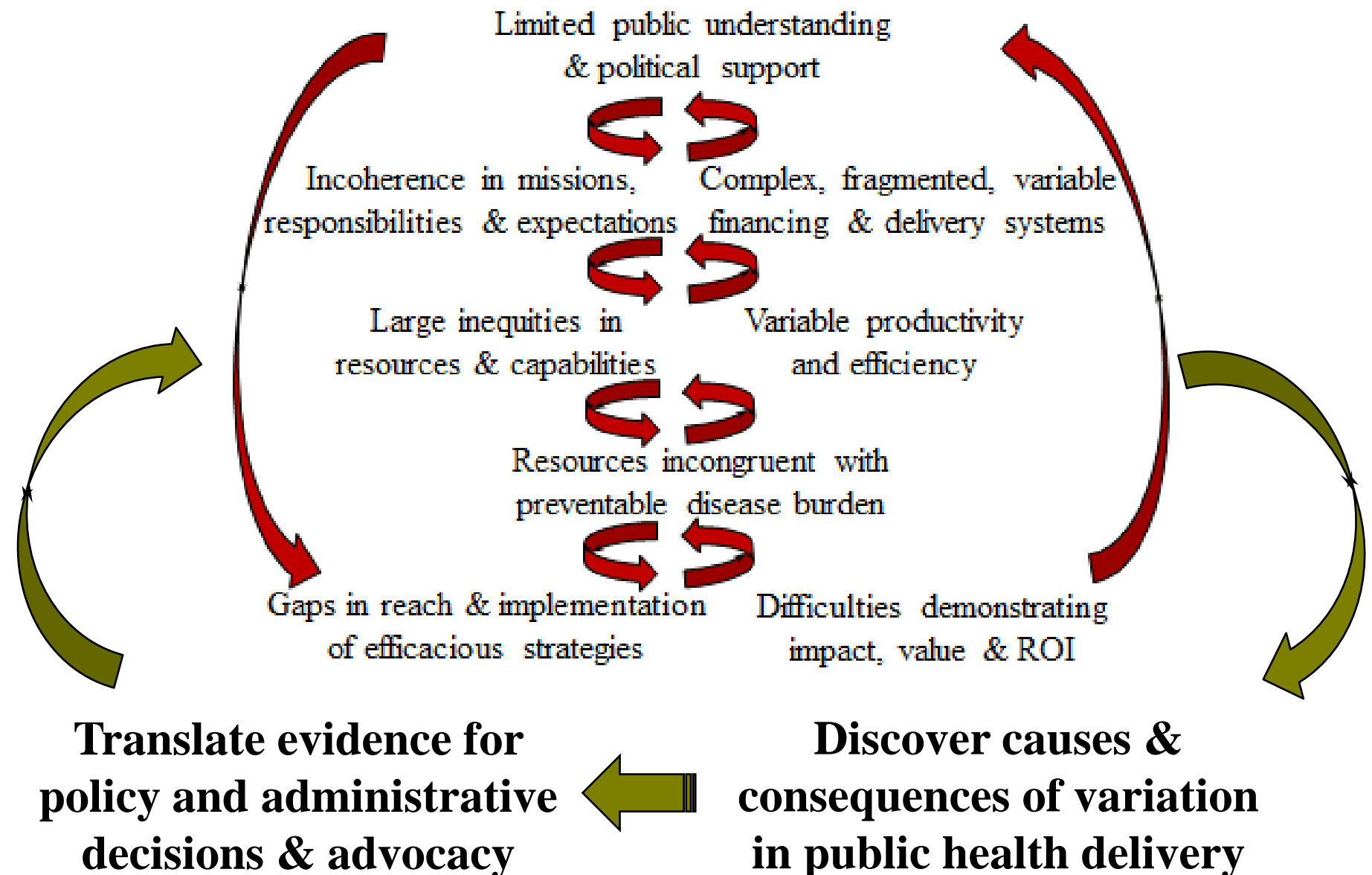
The Public Health PBRN Program: A Status Update

Glen Mays, PhD, MPH
University of Kentucky

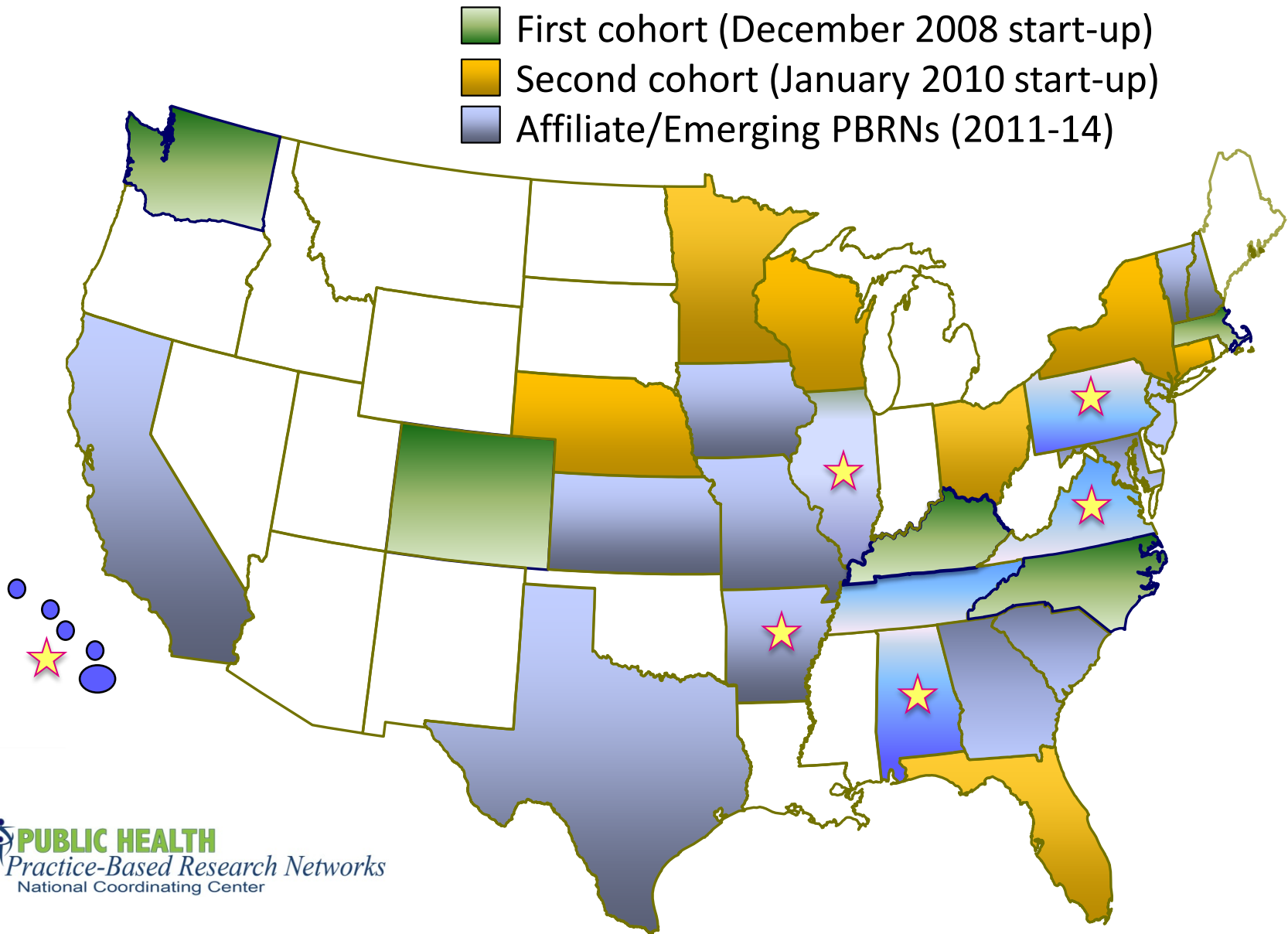
glen.mays@uky.edu

Public Health PBRN Annual Meeting • Lexington KY • 7 April 2014

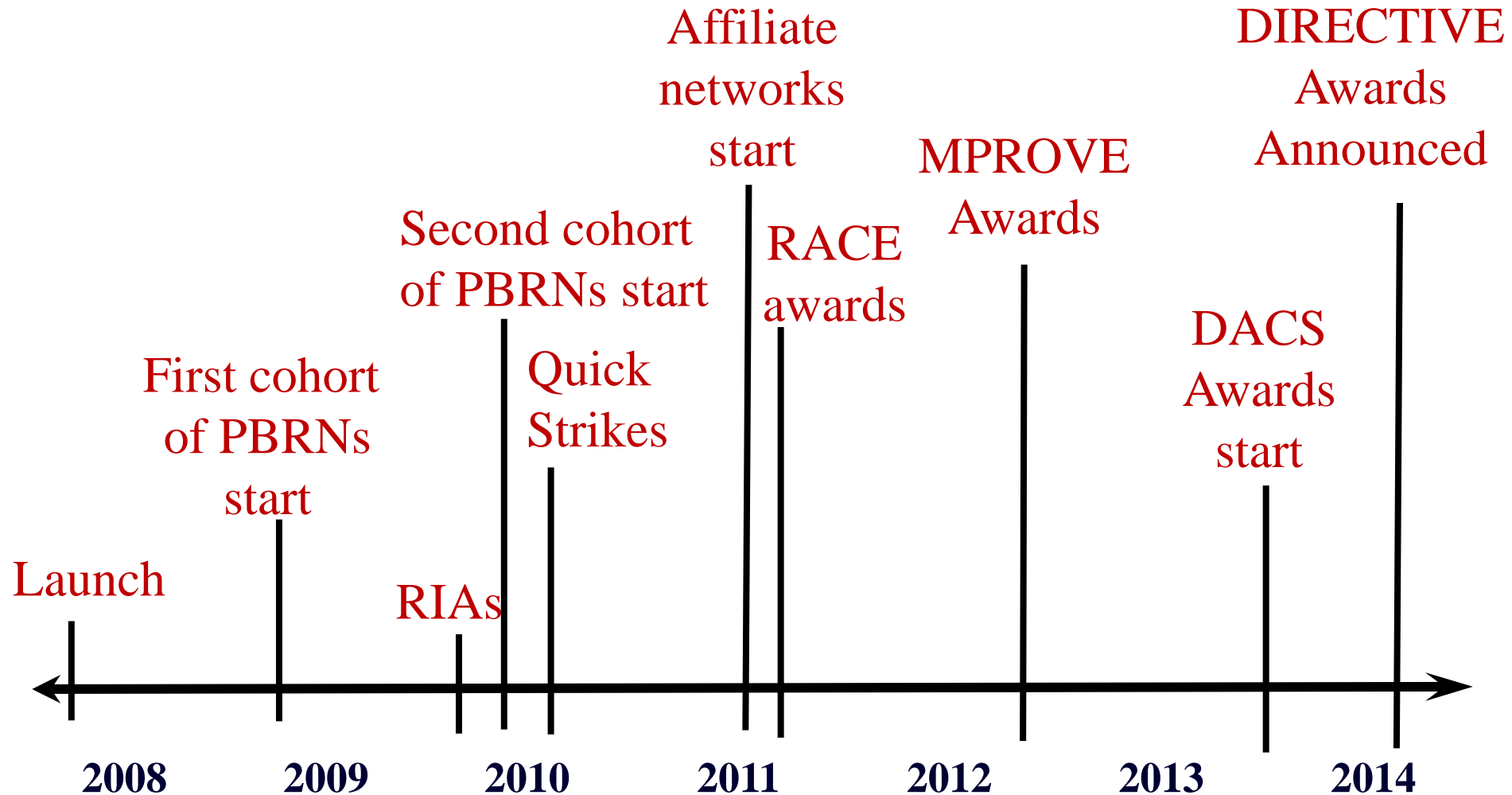
Vicious cycles to learning systems



Diffusion of Public Health PBRNs



A PBRN Timeline



Research Progression

Delivery System Organization and Structure



Practice Variation



Volume, Intensity, and Quality of Delivery



Cost of Delivery



Value of Delivery

PBRN Reach

- 31 networks
- 1593 local public health agencies
- 35 state agencies
- 52 academic research units
- 58 professional & community organizations

Productivity & Dissemination

- 60 competitively awarded research projects
- 68 articles in peer-reviewed journals
- 221 presentations and conferences & meetings
- 51 reports & tools in the grey literature
- Earned media in elite venues: *Modern Healthcare*, *Forbes*, *Kaiser Health News*, *PBS*, *Men's Health*
- >15,000 downloads of *Frontiers in PHSSR* articles
- >8,000 downloads from Research Archive
- >2,000 page views on PublicHealthEconomics blog

PBRNs and Practice Engagement

Local Health Departments Engaged in Research Implementation & Translation Activities During Past 12 months

	PBRN Agencies		National Sample		
<u>Activity</u>	<u>Percent/Mean</u>		<u>Percent/Mean</u>		
Identifying research topics	94.1%		27.5%		***
Planning/designing studies	81.6%		15.8%		***
Recruitment, data collection & analysis	79.6%		50.3%		**
Disseminating study results	84.5%		36.6%		**
Applying findings in own organization	87.4%		32.1%		**
Helping others apply findings	76.5%		18.0%		***
Research implementation composite	84.04	(27.38)	30.20	(31.38)	**
N	209		505		

- Intramural research activities
 - **Public Health Value**: Cost estimation & economic evaluation
 - **Public Health Reform**: Effects of ACA on public health delivery
- Extramural research programs
 - Quick Strike studies
 - Multi-network research activities

■ Data Development

- Periodic census surveys of local and state agencies
- National Longitudinal Survey of Public Health Systems
- Tracking PH expenditures: US Census of Governments, Uniform Public Health Chart of Accounts
- Public Health Activities and Services Tracking (PHAST): compiling existing administrative data across states

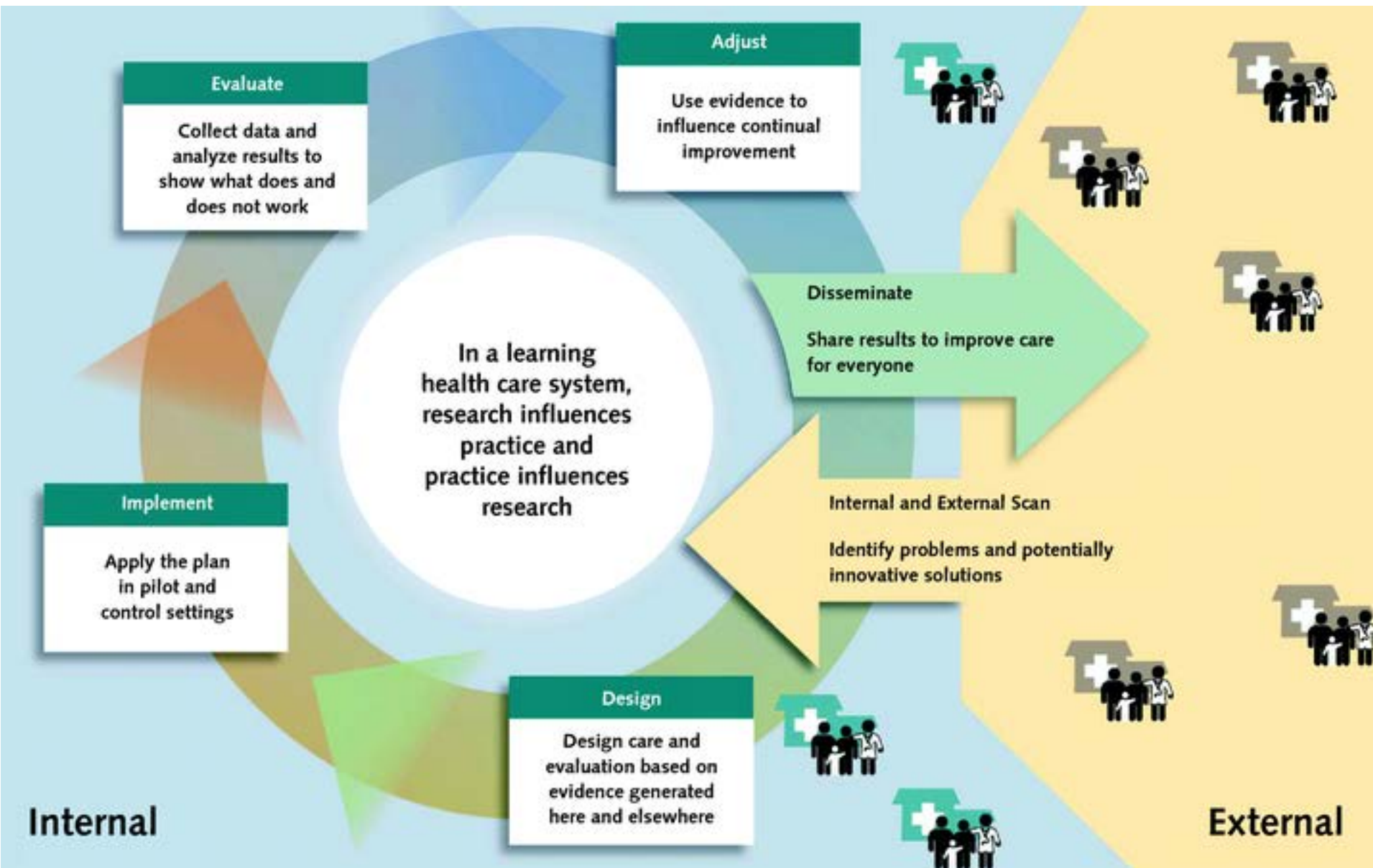
■ Dissemination & Translation

- Weekly Work in Progress Webinars
- Open-access journal: ***Frontiers in PHSSR***
- Newsletters, Podcasts, Blogs
- Briefings with policy stakeholders

Future Directions

- RWJF's *Culture of Health* strategic direction
- Population health improvement strategies
- Bridging public health and health care
- Strategies to enhance value
- Monitoring health reform implementation & impact
- Federal research funding

Toward a “rapid-learning system” in public health



For More Information



Supported by The Robert Wood Johnson Foundation

Glen P. Mays, Ph.D., M.P.H.

glen.mays@uky.edu

Email: publichealthPBRN@uky.edu

Web: www.publichealthsystems.org

Journal: www.FrontiersinPHSSR.org

Archive: works.bepress.com/glen_mays

Blog: publichealtheconomics.org

