



Get Your Creative Commons Juices Flowing

Discover by Doing Workshop
Series

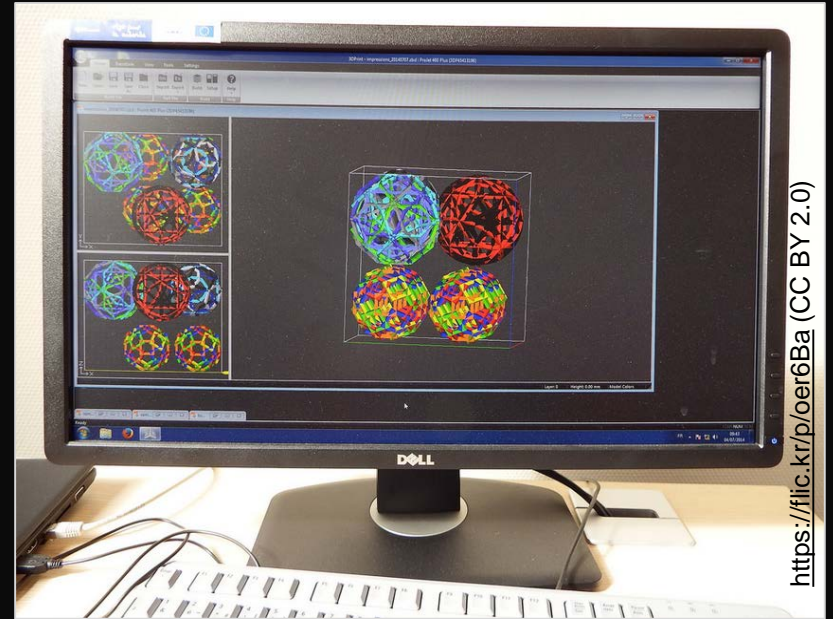
Albertsons Library

Michelle Armstrong and
Amber Sherman

This is Jamie.



<https://flic.kr/p/oCNwvg> (CC BY-NC-SA 2.0)



<https://flic.kr/p/oer6Ba> (CC BY 2.0)

Jamie is creating a 3D model for one of his classes.

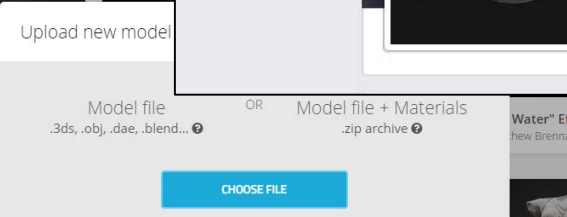
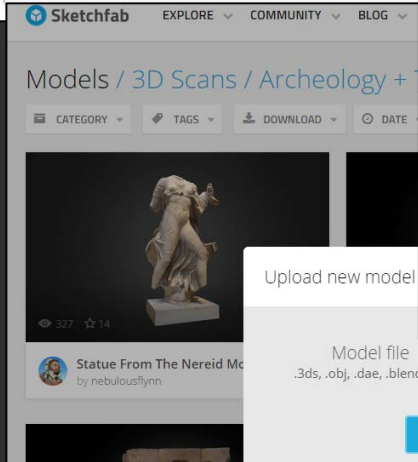
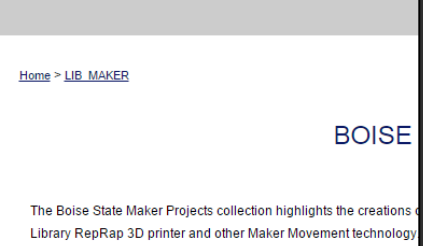
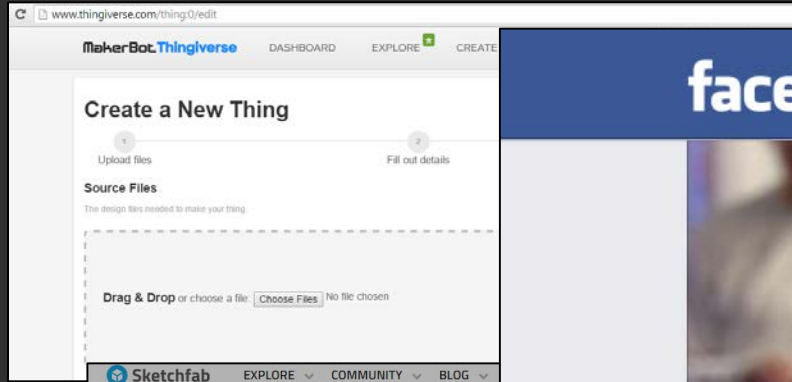
If you were Jamie, what would you like to do with your model?

Go to PollEv.com/scholarworks and type your answers

Section 106 of the U.S. Copyright Law grants authors exclusive rights:

- ***to reproduce the copyrighted work*** in copies or phonorecords
- ***to prepare derivative works*** based upon the copyrighted work
- ***to distribute copies*** or phonorecords of the copyrighted work to the public by sale or other transfer of ownership, or by rental, lease, or lending
- in the case of literary, musical, dramatic, and choreographic works, pantomimes, and motion pictures and other audiovisual works, ***to perform*** the copyrighted work publicly
- in the case of literary, musical, dramatic, and choreographic works, pantomimes, and pictorial, graphic, or sculptural works, including the individual images of a motion picture or other audiovisual work, ***to display*** the copyrighted work publicly
- in the case of sound recordings, ***to perform*** the copyrighted work publicly by means of a digital audio transmission

Jamie wants to show people what he made.



That's great! Let's use Creative Commons!

WE ♥ CREATIVE COMMONS



Image by Steven Giannini
Using characters from Big Buck Bunny
Creative Commons Attribution 3.0

<https://flic.kr/p/5asHxW> (CC BY 2.0)

Um...what's Creative Commons?

What's in it for Jamie?

Go to PollEv.com/scholarworks and type your answers

Creative Commons Chooser Tool

Creative Commons Corporation [US] <https://creativecommons.org/choose/>

creative commons About Licenses Public Domain Support CC Projects News Site Search

Get Creative Commons updates

New to Creative Commons? [[Considerations before licensing](#)] [[How the licenses work](#)]
Explore the Creative Commons licenses. [[Want public domain instead?](#)]
[[Looking for earlier license versions, including ports?](#)]

License Features

Your choices on this panel will update the other panels on this page.

Allow adaptations of your work to be shared?

Yes No

Yes, as long as others share alike

Allow commercial uses of your work?

Yes No

Selected License

Attribution 4.0 International

This is a Free Culture License!

Help others attribute you!

This part is optional, but filling it out will add machine-readable metadata to the suggested HTML!

Title of work

Attribute work to name

Attribute work to URL

Source work URL

More permissions URL

Format of work

License mark

Have a web page?

This work is licensed under a Creative Commons Attribution 4.0 International License.

Copy this code to let your visitors know!

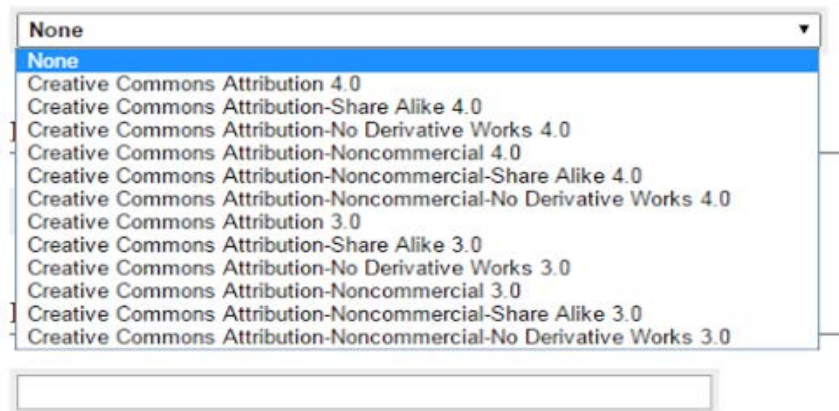
```
<a rel="license"
href="http://creativecommons.org/licenses/by/4.0/"></a><br />This work is licensed under a <a
rel="license"
href="http://creativecommons.org/licenses/by/4.0/">Crea
```

Normal Icon Compact Icon

How else can you add a Creative Commons license?

Creative Commons License

For information about Creative Commons and how to choose a license, watch [this video](#).



A screenshot of a dropdown menu for selecting a Creative Commons license. The menu is open, showing a list of license options. The top option is 'None', which is currently selected and highlighted in blue. Below it are several Creative Commons license versions, including Attribution 4.0, Attribution-Share Alike 4.0, Attribution-No Derivative Works 4.0, Attribution-Noncommercial 4.0, Attribution-Noncommercial-Share Alike 4.0, Attribution-Noncommercial-No Derivative Works 4.0, Attribution 3.0, Attribution-Share Alike 3.0, Attribution-No Derivative Works 3.0, Attribution-Noncommercial 3.0, Attribution-Noncommercial-Share Alike 3.0, and Attribution-Noncommercial-No Derivative Works 3.0. Below the dropdown menu is an empty text input field.

Creative Commons license

Select what others can and can't do:

- Attribution**
Others can distribute, remix, tweak, and build upon your work as long as they credit you for the original creation.
- Non Commercial**
Others can not use your work commercially.
- No derivatives**
Others can redistribute as long as it is passed along unchanged and in whole.
- Share alike**
Others can remix, tweak, and build upon your work as long as they license their new creations under the identical terms.

CANCEL

SELECT

Your Turn!

Read the scenario given to your group.

Use the Creative Commons chooser tool to create a license.

How would you display this license?

Share with the group what you've chosen.

Wikipedia



WIKIPEDIA
The Free Encyclopedia

- [Main page](#)
- [Contents](#)
- [Featured content](#)
- [Current events](#)
- [Random article](#)
- [Donate to Wikipedia](#)
- [Wikimedia Shop](#)

- [Interaction](#)
- [Help](#)
- [About Wikipedia](#)

[Create account](#) [Log in](#)

Article [Talk](#)

[Read](#) [Edit](#) [View history](#)

Boise State University

From Wikipedia, the free encyclopedia

Coordinates: 43.604°N 116.204°W﻿ / ﻿43.604°N 116.204°W﻿ / 43.604; -116.204

Boise State University is a public research institution in Boise, Idaho.

Founded in 1932 by the [Episcopal Church](#), it became an independent junior college in 1934, and has been awarding baccalaureate and master degrees since 1965.^[2] With nearly 23,000 students, Boise State has the largest enrollment of higher education institutions in the state of Idaho.^[3]

Boise State offers 201 degrees in 190 fields of study and has more than 100 graduate programs, including the [MBA](#) and [MAcc](#) programs in the College of Business and Economics; [Masters](#) and [PhD](#) programs in the Colleges of Engineering, Arts & Sciences, and Education; and the [MPA](#) program in the College of Social Sciences & Public Affairs.

Boise State University



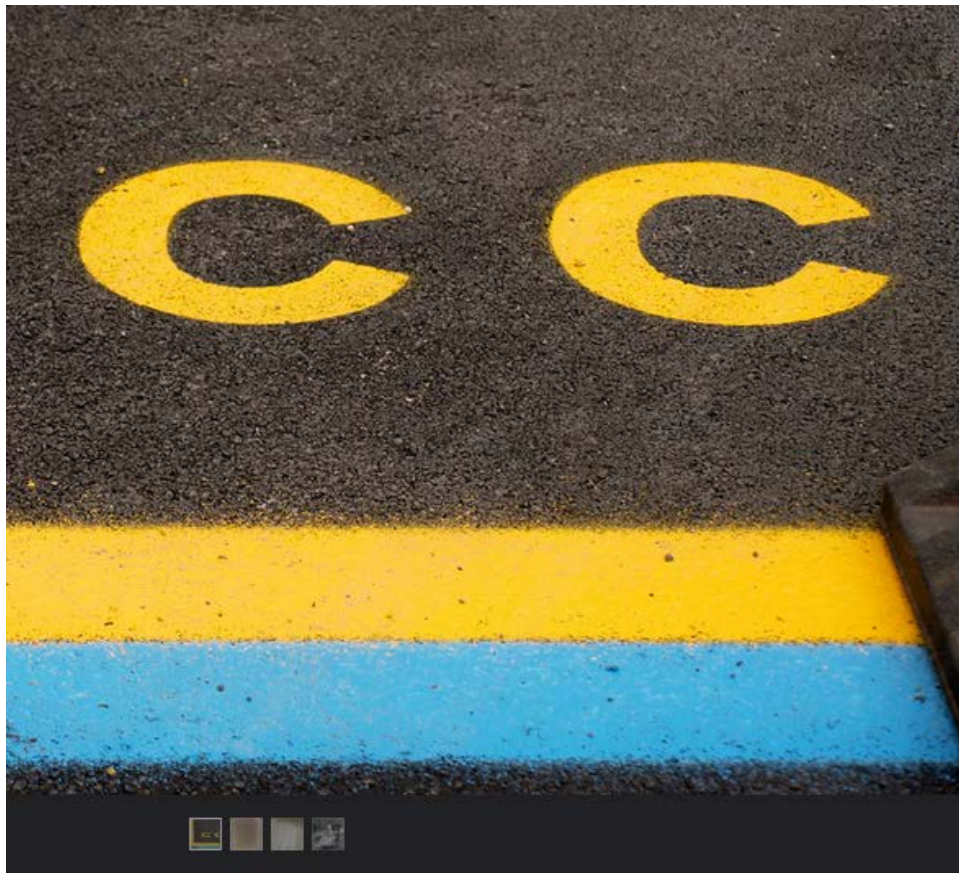
This page was last modified on 15 January 2015, at 07:58.

Text is available under the [Creative Commons Attribution-ShareAlike License](#); additional terms may apply. By using this site, you agree to the [Terms of Use](#) and [Privacy Policy](#). Wikipedia® is a registered trademark of the [Wikimedia Foundation, Inc.](#), a non-profit organization.

[Privacy policy](#) [About Wikipedia](#) [Disclaimers](#) [Contact Wikipedia](#) [Developers](#) [Mobile view](#)



Flickr



35,402
views

16
faves

10
comments

Taken on April 2, 2009



Some rights reserved

Public Library of Science

Citation: Peacock E, Sonsthagen SA, Obbard ME, Boltunov A, Regehr EV, et al. (2015) Implications of the Circumpolar Genetic Structure of Polar Bears for Their Conservation in a Rapidly Warming Arctic. PLoS ONE 10(1): e112021. doi:10.1371/journal.pone.0112021

Editor: Michael Knapp, Bangor University, United Kingdom

Received: February 25, 2014; **Accepted:** September 19, 2014; **Published:** January 6, 2015

This is an open-access article, free of all copyright, and may be freely reproduced, distributed, transmitted, modified, built upon, or otherwise used by anyone for any lawful purpose. The work is made available under the Creative Commons CC0 public domain dedication.



MIT OpenCourseware



Massachusetts
Institute of
Technology

© 2001–2015

Massachusetts Institute of Technology



OPEN EDUCATION
CONSORTIUM

The Global Network for Open Education



Your use of the MIT OpenCourseWare site and materials is subject to our [Creative Commons License](#) and other [terms of use](#).

What does it mean if you don't chose a license?



All rights reserved

Your Turn – Get Creative!



<http://fav.me/d2n1urk> (CC BY 3.0)

Brainstorm a list of your creations that you might want to distribute using a Creative Commons license.

Which license would work for you?