

**University of Kentucky**

---

**From the Selected Works of Glen Mays**

---

Spring April 8, 2013

# Vital Statistics: The State of the Public Health PBRN Program

Glen Mays, *University of Kentucky*



Available at: [https://works.bepress.com/glen\\_mays/88/](https://works.bepress.com/glen_mays/88/)

# Vital Statistics: The State of the Public Health PBRN Program






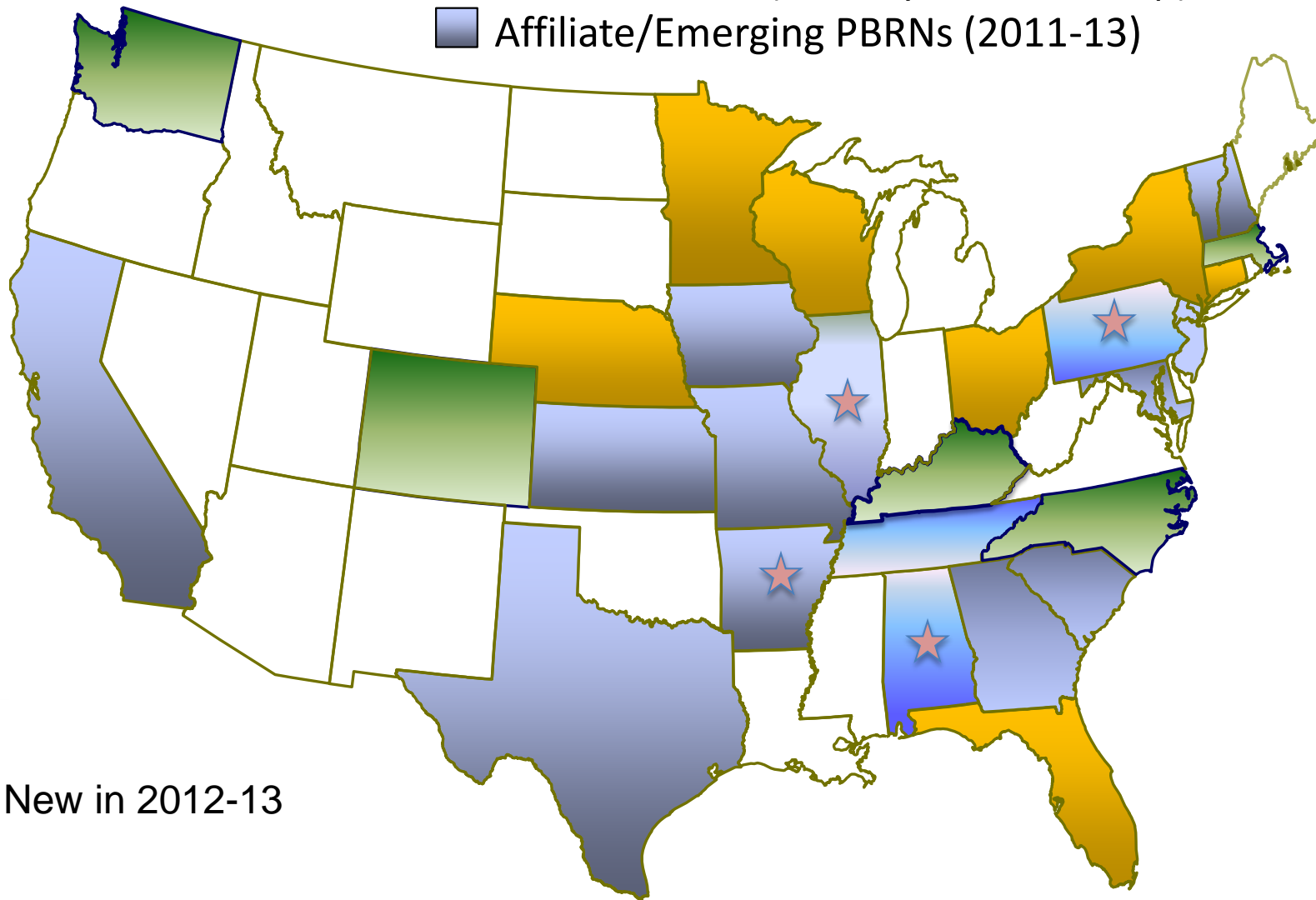
Glen Mays, PhD, MPH  
[glen.mays@uky.edu](mailto:glen.mays@uky.edu)




Public Health PBRN Grantee Meeting • Lexington, KY • 08 April 2013

# Reach of Public Health PBRNs

-  First cohort (December 2008 start-up)
-  Second cohort (January 2010 start-up)
-  Affiliate/Emerging PBRNs (2011-13)



 New in 2012-13

# PBRN funding history:

## By the numbers

- 12** Developmental Awards, 2009-2011
- 10** Research Implementation Awards (RIAs), 2010-2012
- 12** Quick Strike Research Fund Awards (QSRFs), 2009-2013
- 8** Research Acceleration and Capacity Enhancement (RACE) awards, 2011-13
- 6** Multi-network Practice and Outcome Variation Examination (MPROVE) awards, 2012-13
- 2** PBRN Junior Investigator Mentored (JIM) awards, 2012-13
- ??** Delivery and Cost Study (DACS) awards, 2013-14

# PBRN Research Trajectory

- Delivery System Organization and Structure



- Practice Variation



- Volume, Intensity, and Quality of Delivery



- **Cost of Delivery**



- **Value and ROI of Public Health**



# PBRN research production:

## By the numbers 2012-13

- 21** Journal articles published or in press in 2012-13
- Journal of Public Health Management and Practice
  - American Journal of Preventive Medicine
  - Public Health Reports
  - Frontiers in Public Health Services & Systems Research
- 72** Scientific presentations at national meetings
- American Public Health Association
  - AcademyHealth Annual Research Meeting
  - American Society for Health Economics
  - Keeneland Conference
  - NACCHO Annual Meeting
  - National Open Forum on QI in Public Health

# **PBRN research translation:**

## **Invited policy briefings, 2012-13**

- ✓ Association of State and Territorial Health Officials
- ✓ HHS Assistant Secretary for Health
- ✓ HHS Assistant Secretary for Preparedness and Response
- ✓ Institute of Medicine, National Academy of Sciences
- ✓ National Institutes of Health, NIDCR
- ✓ U.S. Agency for Healthcare Research and Quality
- ✓ U.S. Centers for Disease Control and Prevention
- ✓ U.S. Congressional Budget Office
- ✓ U.S. Government Accountability Office
- ✓ U.S. Health Resources and Services Administration
- ✓ U.S. Food and Drug Administration
- ✓ White House Office of Management and Budget

# PBRN research translation:

## Invited lectures and presentations, 2012-13

### Academic Institutions

- University of Chicago
- University of Michigan
- University of Alabama-Birmingham
- University of Nebraska Medical Center
- University of Texas Medical Branch
- Wright State University

### State Public Health Association Meetings

- |              |            |             |
|--------------|------------|-------------|
| -Arkansas    | -Kentucky  | -Washington |
| -Colorado    | -Minnesota |             |
| -Connecticut | -Ohio      |             |



## PBRN research:

### New dissemination vehicles

#### Frontiers in Public Health Services & Systems Research

- 6 issues
- 32 articles published to date
- >1000 downloads per month
- Publication agreements with AJPM and ARPH



#### Re-ACT Podcasts

- 2 editions produced
- More in production

#### Digital Commons research archive

>27,000 downloads



# **PBRN research:**

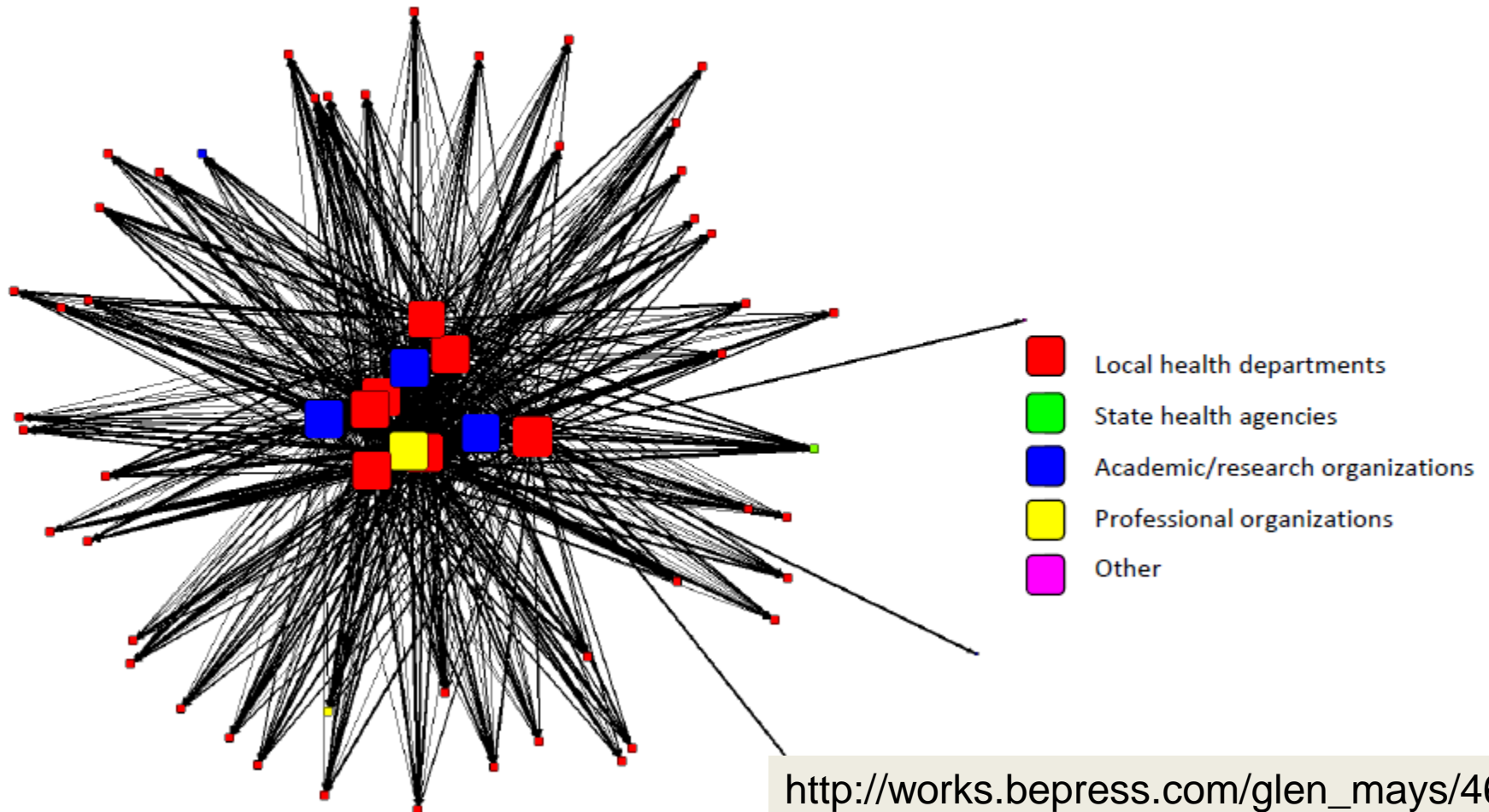
## **Special research projects**

- ✓ **Public Health Activities and Services Tracking Study**
- ✓ **PBRN Network Analysis**
- ✓ **National Longitudinal Study of Public Health Systems**



# PBRN research: Network Analysis

Network Structure of the Connecticut Public Health PBRN • 2011-12



# PBRN research: Network Analysis

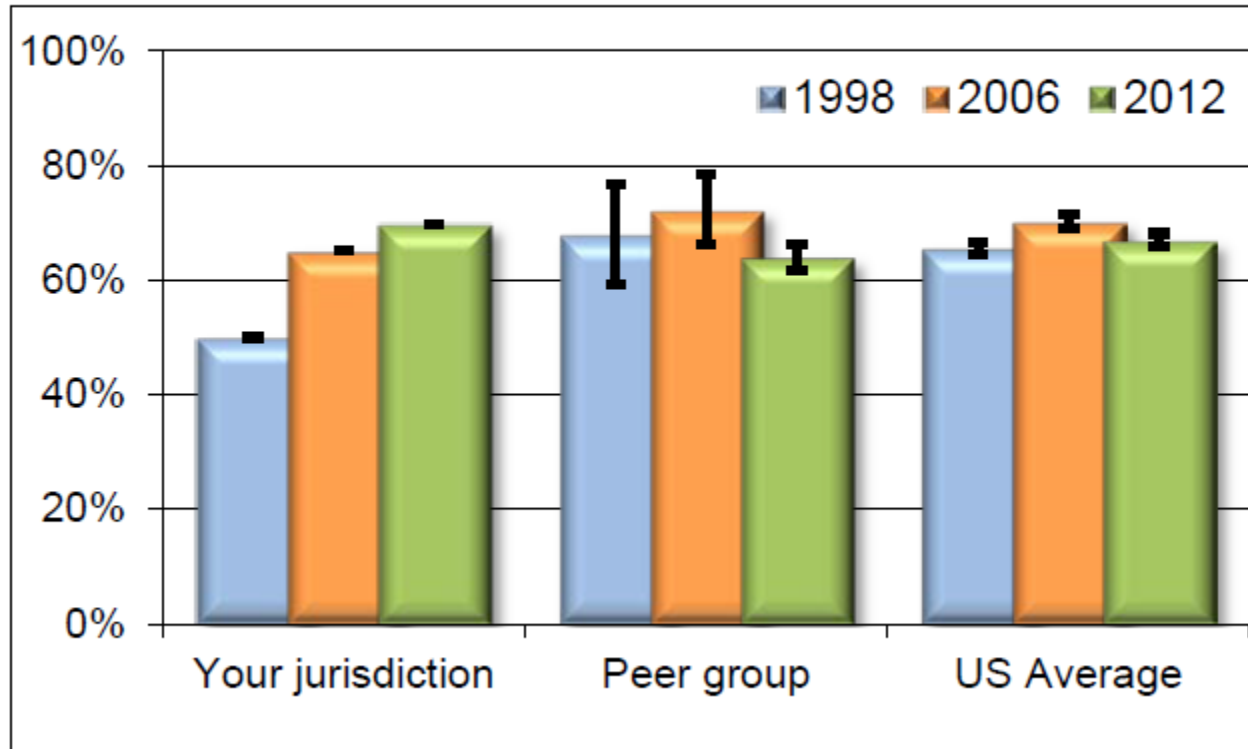
## Local Health Departments Engaged in Research Implementation & Translation Activities During Past 12 months

	PBRN Agencies	National Sample	
<u>Activity</u>	<u>Percent/Mean</u>	<u>Percent/Mean</u>	
Identifying research topics	94.1%	27.5%	***
Planning/designing studies	81.6%	15.8%	***
Recruitment, data collection & analysis	79.6%	50.3%	**
Disseminating study results	84.5%	36.6%	**
Applying findings in own organization	87.4%	32.1%	**
Helping others apply findings	76.5%	18.0%	***
Research implementation composite	84.04 (27.38)	30.20 (31.38)	**
N	209	505	

# PBRN research:

## National Longitudinal Survey of Public Health Systems

**Figure 1: Proportion of Public Health Activities Available  
in the Jurisdiction**

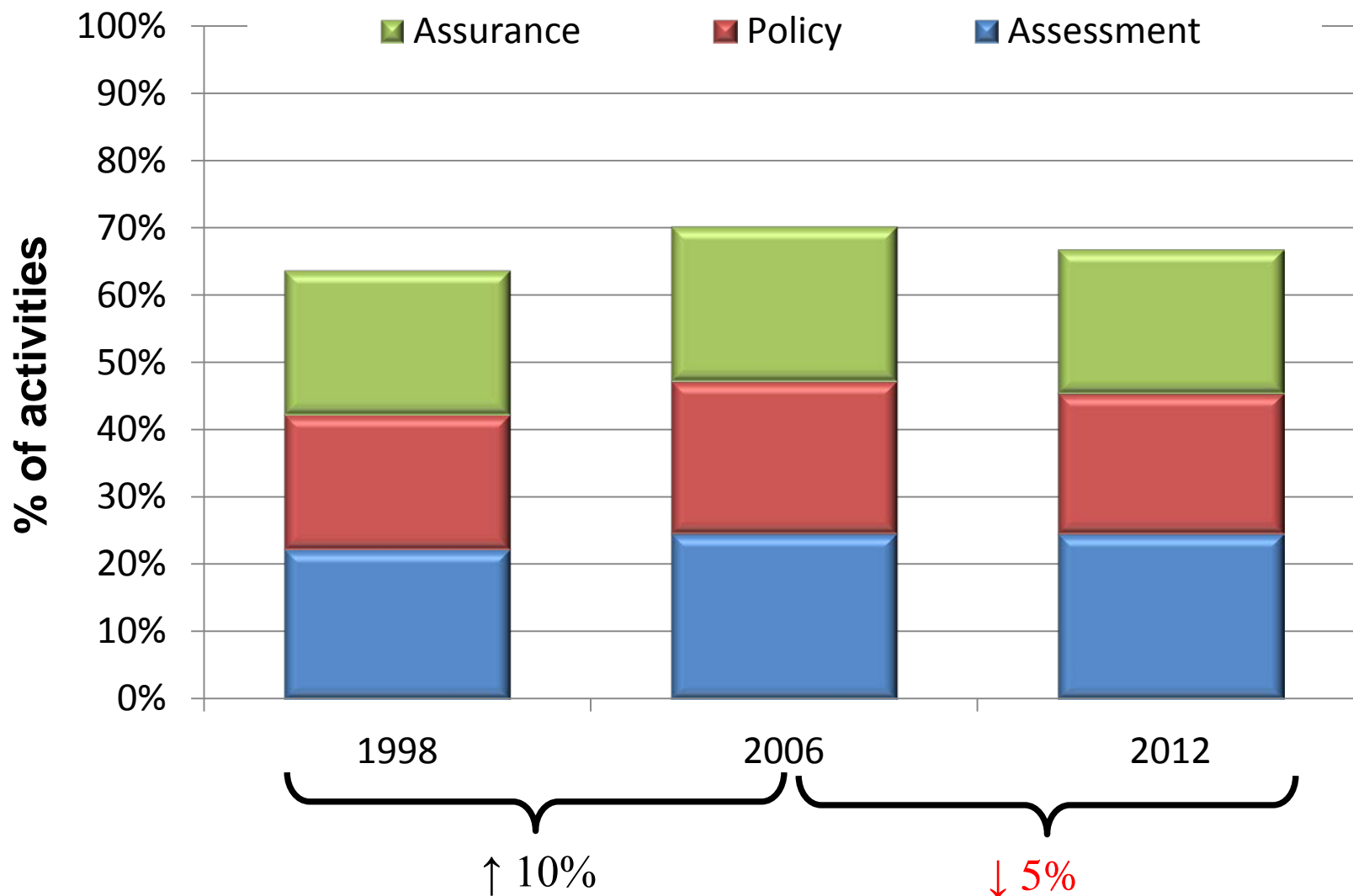


[http://works.bepress.com/glen\\_mays/67/](http://works.bepress.com/glen_mays/67/)

# PBRN research:

## National Longitudinal Survey of Public Health Systems

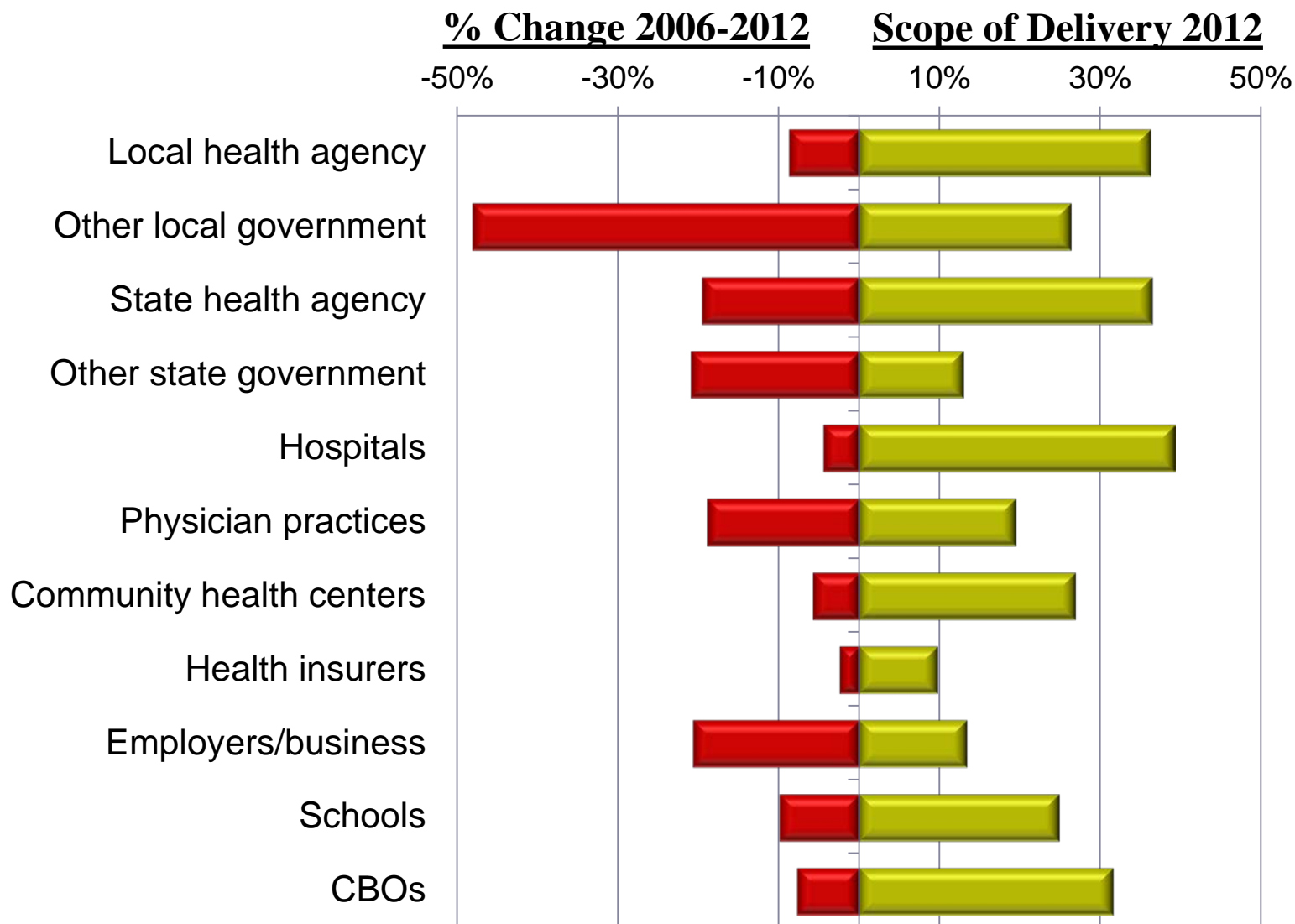
### Delivery of recommended public health activities



# PBRN research:

## National Longitudinal Survey of Public Health Systems

### Organizations engaged in local public health delivery



# **PBRN research:**

## **Networking and Capacity-building**

- ✓ **Monthly Virtual Meeting and Research-in-Progress Briefing**
- ✓ **Newsletter**
- ✓ **On demand technical assistance**
- ✓ **Guidance documents**





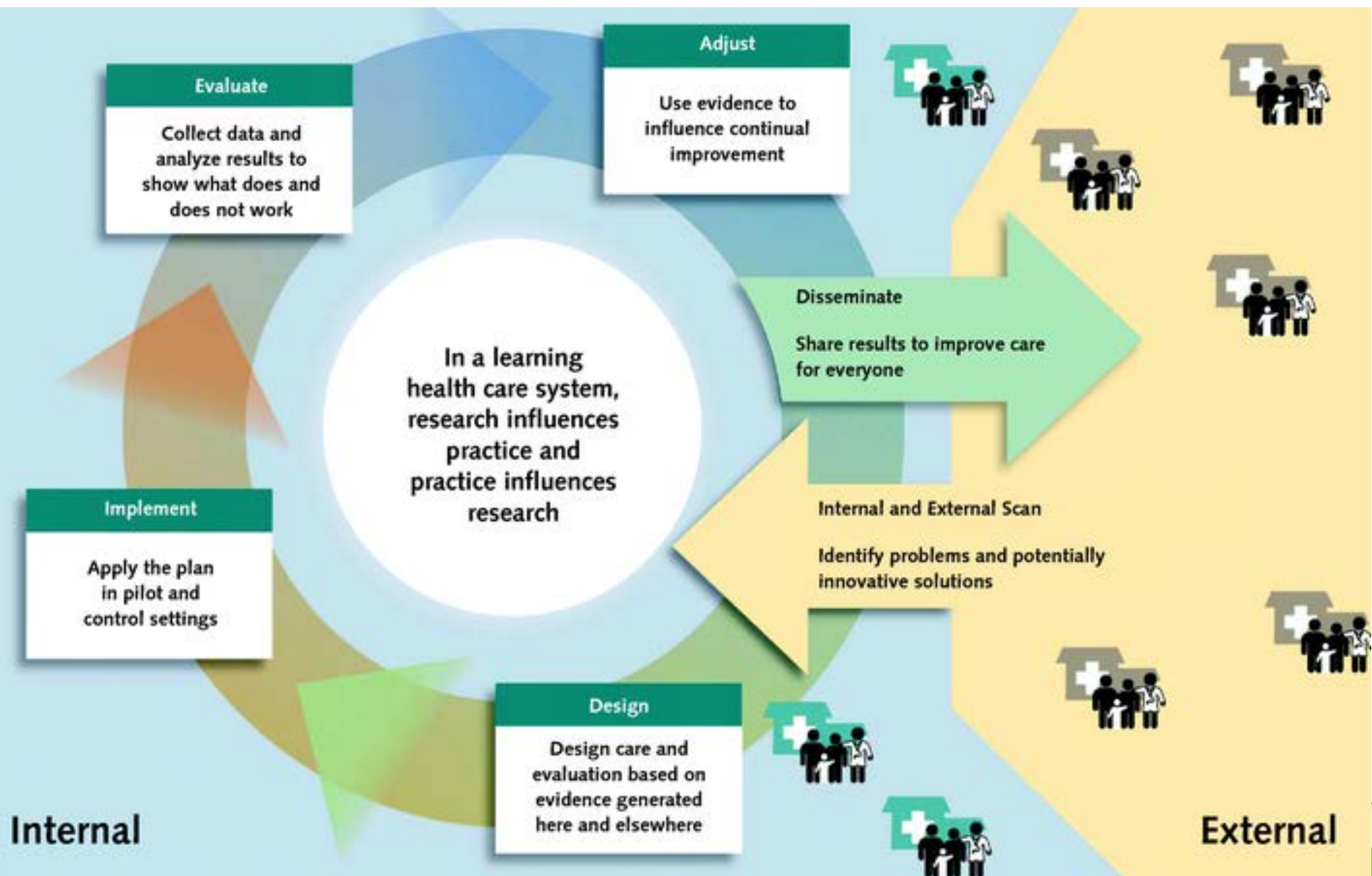
# PBRN research: Guidance documents

- ✓ Overview of the Public Health PBRN Program  
[http://works.bepress.com/glen\\_mays/18/](http://works.bepress.com/glen_mays/18/)
- ✓ Leading Improvement through Inquiry: PBRNs in Public Health  
[http://works.bepress.com/glen\\_mays/83/](http://works.bepress.com/glen_mays/83/)
- ✓ Current Research Projects of the Public Health PBRN Program  
[http://works.bepress.com/glen\\_mays/17/](http://works.bepress.com/glen_mays/17/)
- ✓ Designing a Successful PBRN in Public Health: Key Concepts  
[http://works.bepress.com/glen\\_mays/40/](http://works.bepress.com/glen_mays/40/)
- ✓ Start-Up Activities for Public Health PBRNs  
[http://works.bepress.com/glen\\_mays/34/](http://works.bepress.com/glen_mays/34/)
- ✓ Building a Sustainable Public Health PBRN: Securing Ongoing Funding  
[http://works.bepress.com/glen\\_mays/20/](http://works.bepress.com/glen_mays/20/)
- ✓ Using PBRN Research to Inform Policy and Practice  
[http://works.bepress.com/glen\\_mays/19/](http://works.bepress.com/glen_mays/19/)
- ✓ Initial Research and Evaluation Concepts for Public Health PBRNs  
[http://works.bepress.com/glen\\_mays/35/](http://works.bepress.com/glen_mays/35/)
- ✓ Patterns of Interaction in Public Health PBRNs: Insights from Network Analysis  
[http://works.bepress.com/glen\\_mays/46/](http://works.bepress.com/glen_mays/46/)

# PBRN research: Guidance documents

- ☑ Expanding Delivery System Research in Public Health Settings: Lessons from Practice-Based Research Networks  
[http://works.bepress.com/glen\\_mays/59/](http://works.bepress.com/glen_mays/59/)
- ☑ Overview of the National Longitudinal Survey of Public Health Systems  
[http://works.bepress.com/glen\\_mays/33/](http://works.bepress.com/glen_mays/33/)
- ☑ Finding Order in Complexity: a Typology of Public Health Delivery Systems  
[http://works.bepress.com/glen\\_mays/39/](http://works.bepress.com/glen_mays/39/)

# The End Game: A “rapid-learning system” in public health



# For More Information



**Supported by The Robert Wood Johnson Foundation**

Glen P. Mays, Ph.D., M.P.H.  
[glen.mays@uky.edu](mailto:glen.mays@uky.edu)

Email: [publichealthPBRN@uky.edu](mailto:publichealthPBRN@uky.edu)  
Web: [www.publichealthsystems.org](http://www.publichealthsystems.org)  
Journal: [www.FrontiersinPHSSR.org](http://www.FrontiersinPHSSR.org)  
Research archive: [http://works.bepress.com/glen\\_mays](http://works.bepress.com/glen_mays)



University of Kentucky College of Public Health  
Lexington, KY