

University of Kentucky

From the Selected Works of Glen Mays

Spring April 11, 2014

Workshop: Organizing Community-Engaged Scholarship to Improve Population Health

Glen P. Mays, *University of Kentucky*



Available at: https://works.bepress.com/glen_mays/149/

WORKSHOP

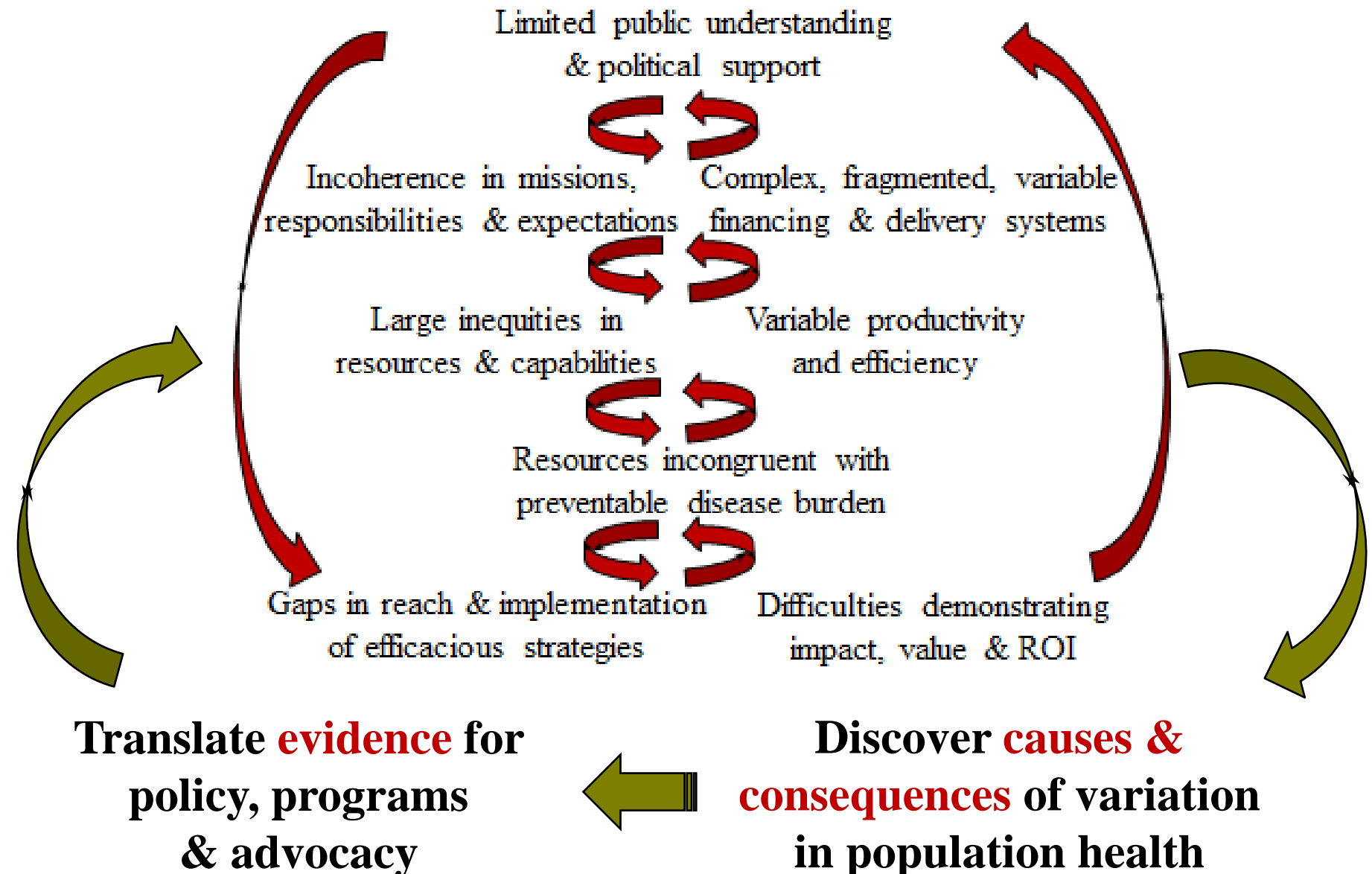
Harnessing Community Engaged Scholarship for Collective Action to Improve Population Health

Glen Mays, PhD, MPH
University of Kentucky

glen.mays@uky.edu

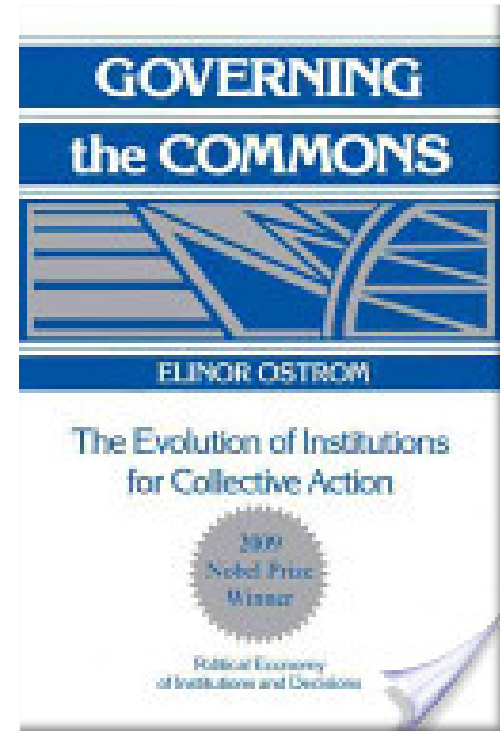
UNC-Wilmington Health & Human Services Faculty Workshop • Wilmington NC • 11 April 2014

Vicious cycles to learning systems



What Makes Population Health Strategies So Hard?

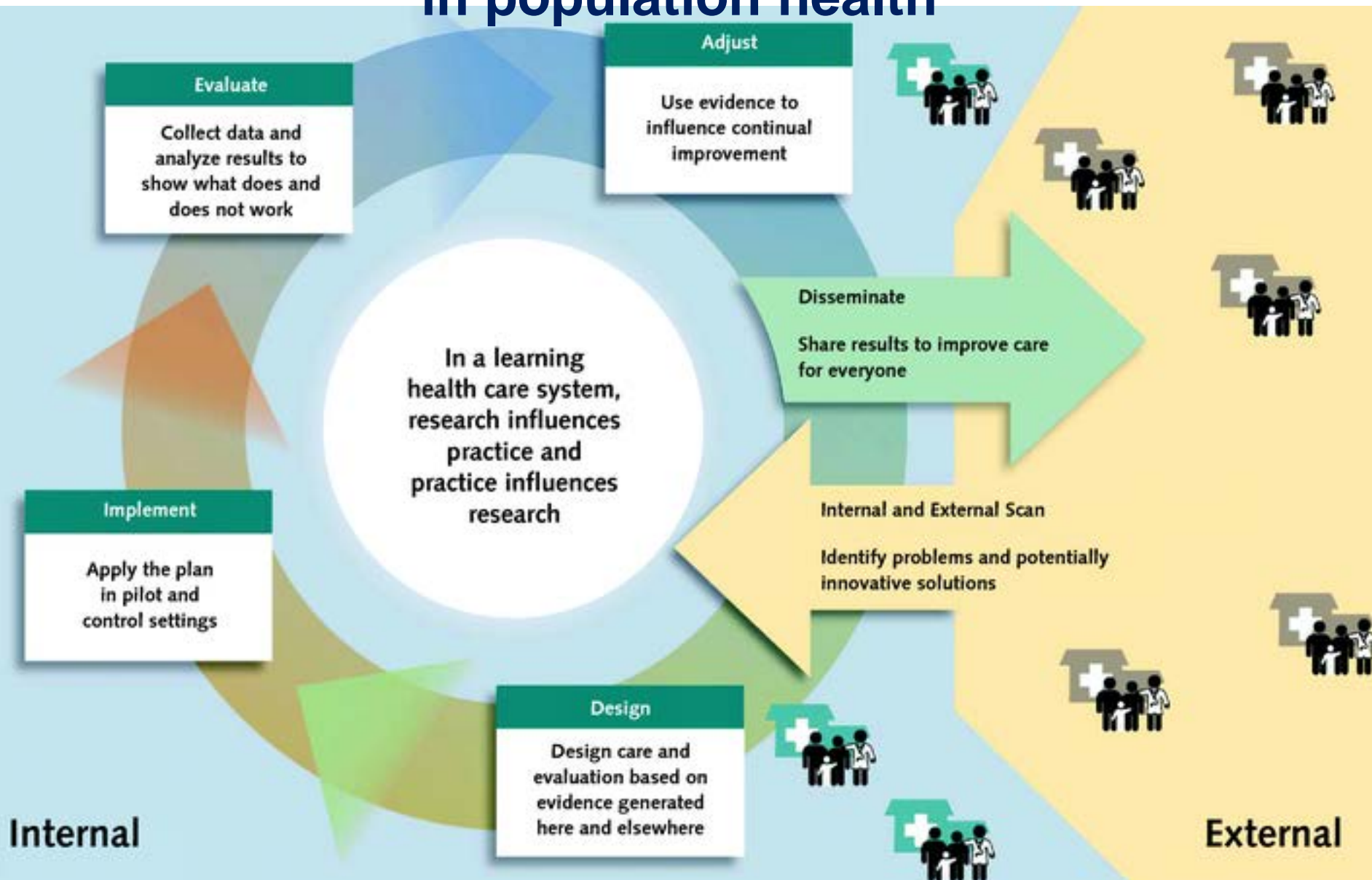
- Incentive compatibility → public goods
- Concentrated costs & diffuse benefits
- Time lags: costs vs. improvements
- Uncertainties about what works
- Asymmetry in information
- Difficulties measuring progress
- Weak and variable institutions & infrastructure
- Imbalance: resources vs. needs
- Stability & sustainability of funding



How Can Community-Engaged Research Help?

- Identify common interests, incentives & problems
- Mitigate asymmetries in power & information
- Use theory, evidence & experience to design strategies with high probability of success
- Measure progress & provide feedback
 - Fail fast
 - Continuously improve
- Evaluate health & economic impact

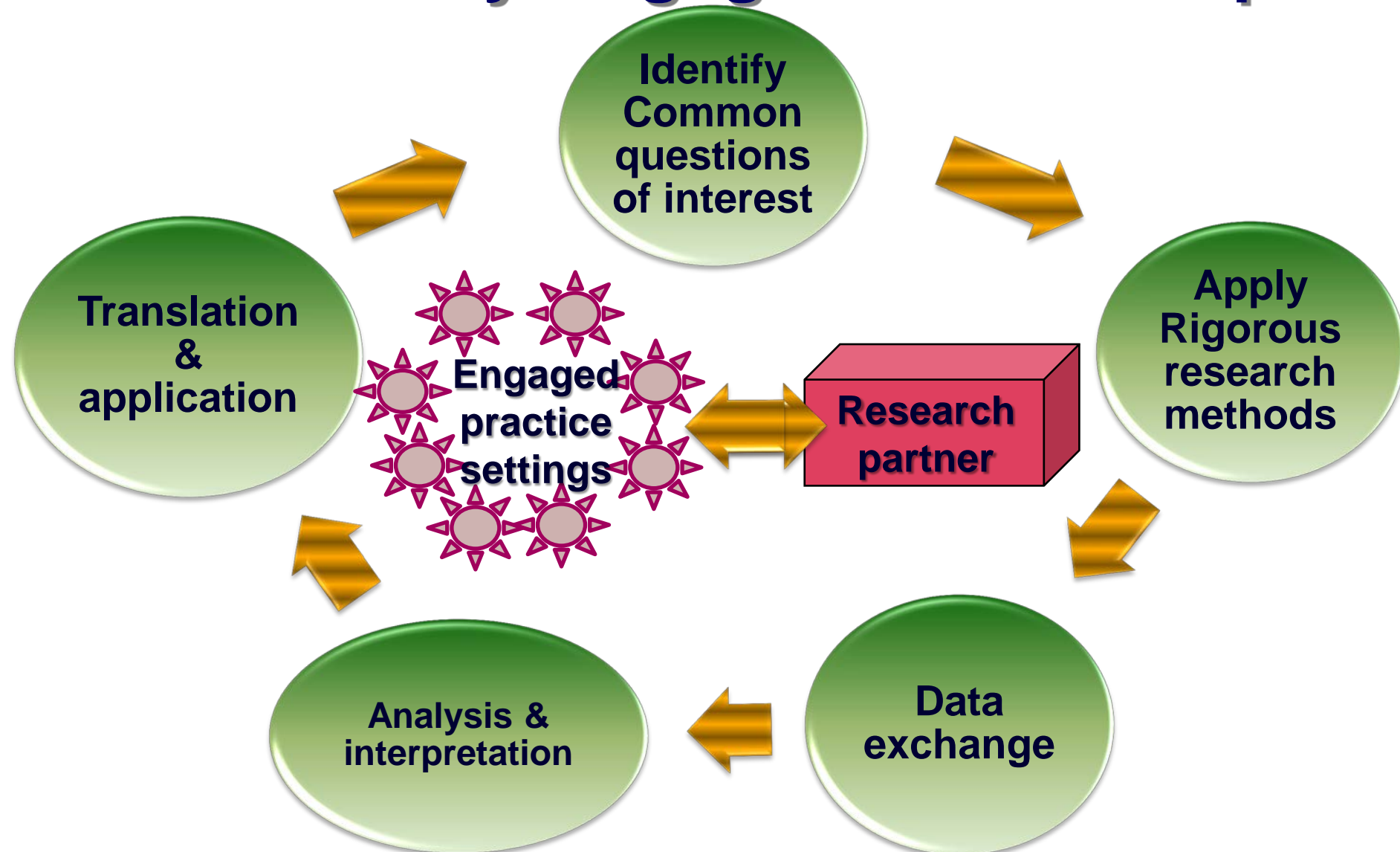
Toward a “rapid-learning system” in population health



What is Practice-Based Research?

- Research that tests effectiveness & impact of practices & policies in ***real-world settings***
- Research designed to address uncertainties and information needs of real-world public health ***decision-makers***
- Research that evaluates the implementation and impact of ***innovations in practice***
- Research that uses ***observations generated through public health practice*** to produce new knowledge

PBRNs as Mechanisms for Community-Engaged Scholarship



Key elements of success with community engaged scholarship & collective action

- Clear goals
- Congruence between resources & objectives
- Explicit incentives & constraints
- Monitoring mechanisms
- Small wins
- Conflict resolution mechanisms
- Effective communication and information flow
- Nested & embedded activities



By John Kania & Mark Kramer
| [65](#) | [Winter 2011](#)

Developing a strategy for community engaged scholarship

- **Step 1:** Concept Mapping on Research Topics/Issues of Interest
- **Step 2:** Network Analysis of Stakeholders Relevant to Topics
- **Step 3:** Mapping Connections Among Concepts and Stakeholders
- **Step 4:** Distilling Topic-Stakeholder Clusters for Community Engaged Research Development

GroupWork #1:




Concept Mapping Researchable Issues

- What **population health issues** are ripe for study in this community?
- What are the **scientific dimensions** of this issue that are of greatest interest?
 - Knowns and unknowns
 - Pathways and mechanisms of causation & intervention
 - Measurement strategies
 - Analytic strategies
- What are the **practical elements** of this issue that are of greatest importance?
 - Political - Organizational - Professional
 - Economic - Operational - Environmental

GroupWork #2:

Network Analysis of Issue Stakeholders

Choose your favorite population health issue:

-  What **academic/scientific stakeholders** are relevant to this issue?
-  What **community stakeholders** (nonacademic) are relevant to this issue?
-  Where do relationships currently exist **among and between** academic and community stakeholders?

GroupWork #2:

Network Analysis of Issue Stakeholders

Community Stakeholders



GroupWork #3:

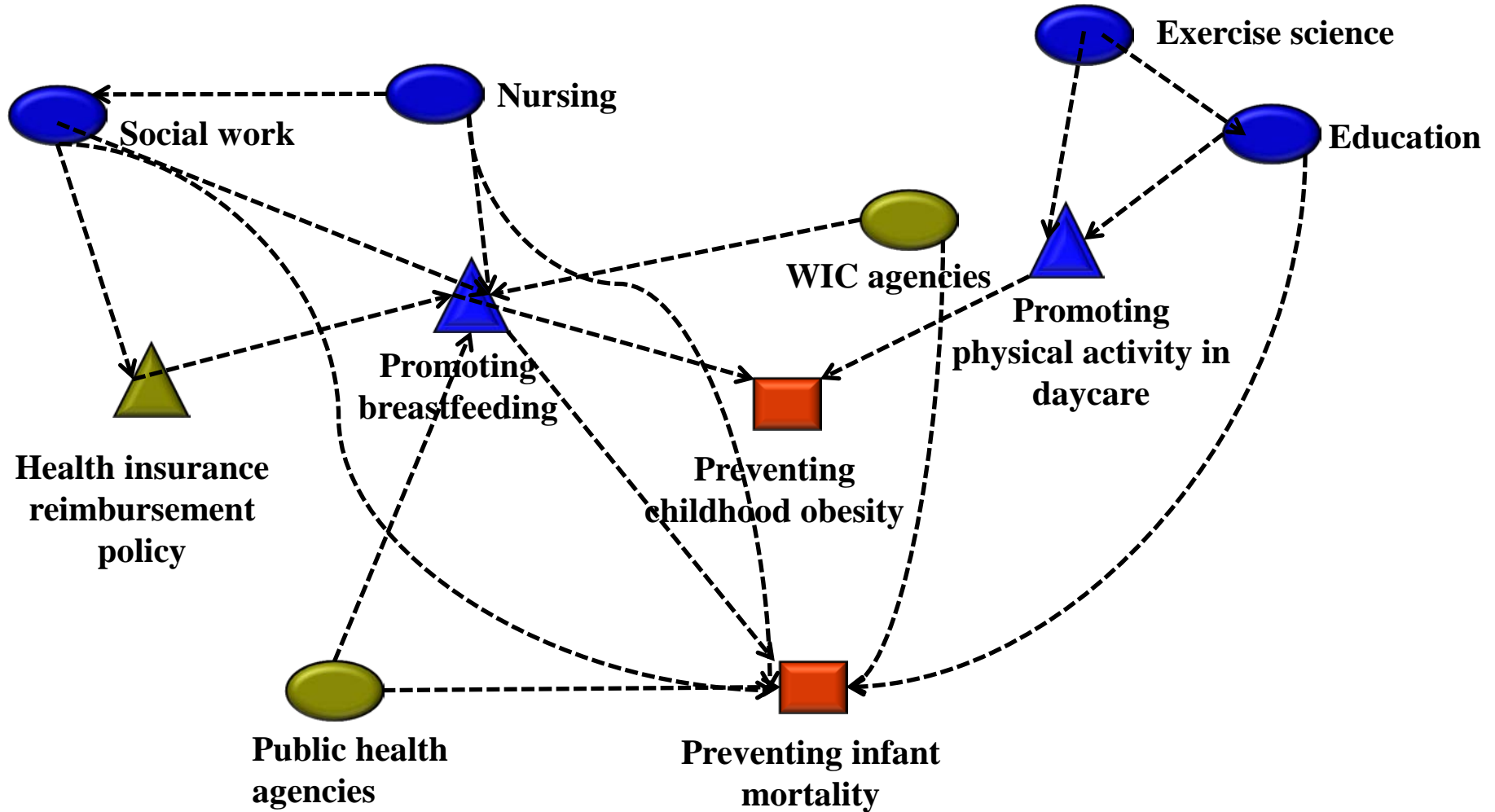
Connecting Concepts and Networks

Start with 2 highest-priority population health issues:

- Which scientific dimensions do they share?
- Which practical elements do they share?
- Which academic stakeholders do they share?
- Which community stakeholders do they share?

Iterate with a 3rd issue, 4th issue, etc

A Concept and Network Map



More Information



Supported by The Robert Wood Johnson Foundation

Glen P. Mays, Ph.D., M.P.H.

glen.mays@uky.edu

Email: publichealthPBRN@uky.edu

Web: www.publichealthsystems.org

Journal: www.FrontiersinPHSSR.org

Archive: works.bepress.com/glen_mays

Blog: publichealtheconomics.org



University of Kentucky College of Public Health
Lexington, KY