

# University of Massachusetts Medical School

---

From the Selected Works of Rebecca C. Reznik-Zellen

---

May 8, 2015

## Expanding Research Intelligence Expertise: Library Collaboration with a Faculty Department to Assess Research Performance [poster]

Rebecca Reznik-Zellen, *University of Massachusetts Medical School*  
Edwin Boudreaux



Available at: [https://works.bepress.com/rebecca\\_reznik-zellen/32/](https://works.bepress.com/rebecca_reznik-zellen/32/)



# Expanding Research Intelligence Expertise: Library Collaboration with a Faculty Department to Assess Research Performance

Rebecca Reznik-Zellen, Lamar Soutter Library, and Edwin Boudreaux, Departments of Emergency Medicine, Psychiatry, and Quantitative Health Sciences, with thanks to Carolyn Kelly, Department of Emergency Medicine University of Massachusetts Medical School

## Objectives

Evaluation of research performance is necessary for the successful administration of academic departments and research institutions. SciVal, an Elsevier research intelligence product, enables libraries to provide support for evaluation projects that exceeds the standard fulfillment of requests for Journal Impact Factors and h-Indices.

At the University of Massachusetts Medical School, the Department of Emergency Medicine sought to benchmark its performance in a meaningful way. Working together with the library, Emergency Medicine used SciVal to evaluate itself against its peers on the basis of citation-based productivity and impact measures.

## Method

Ten peer institutions were identified by the Emergency Medicine Department; 10 faculty from each were randomly selected. Researcher entities were created in SciVal for each faculty, and research groups were created for each institution. Measures of each institutional research group's productivity (scholarly output over time) and impact (citations, cited publications, and citations per publication) were generated for all publication types and for articles only from 2003-2013 with no subject filters and including self-citations.

(SciVal visualizations are shown, center.  
© 2015 Elsevier.)

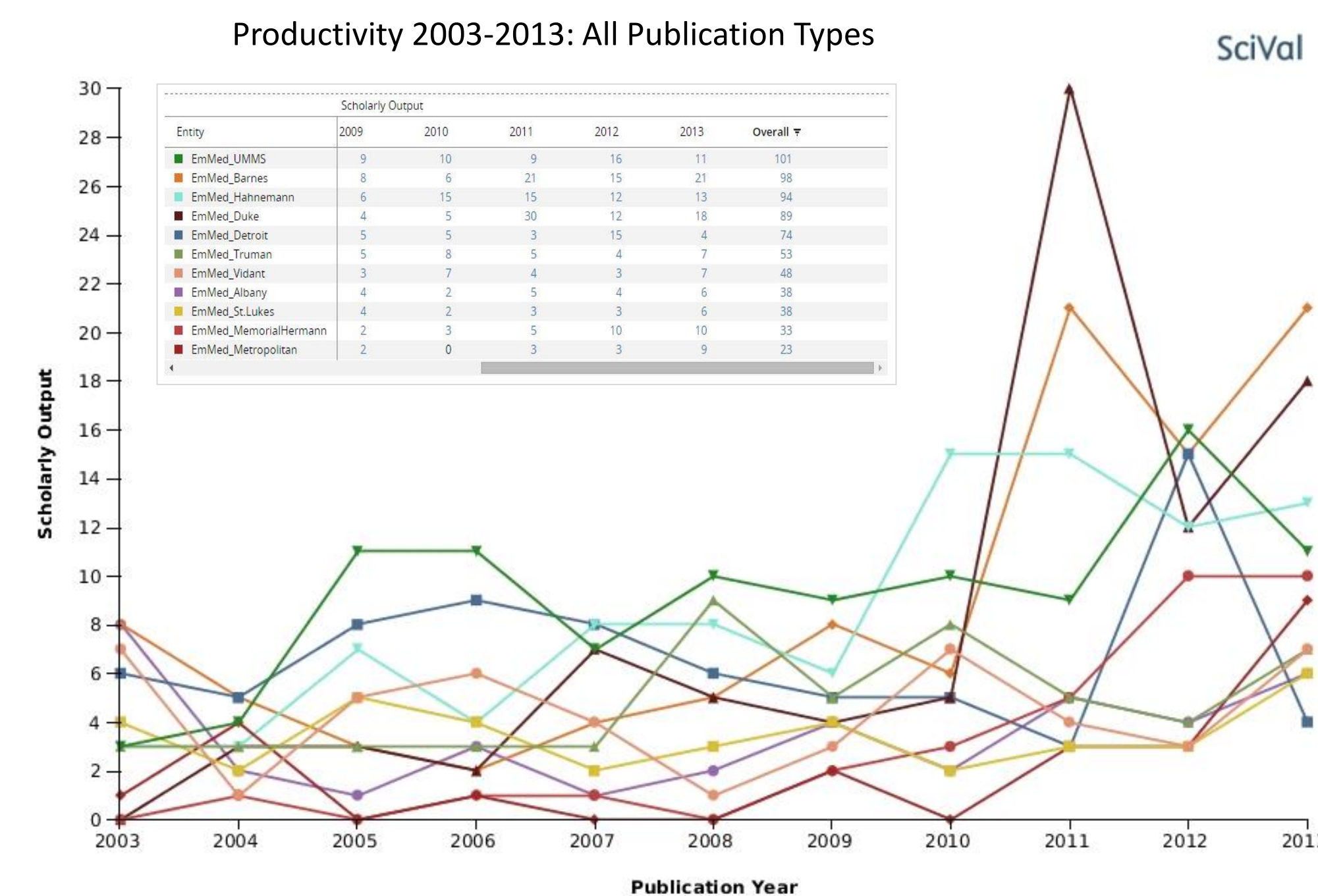


Chart Legend

- EmMed\_Albany [Group of Researchers]
- EmMed\_Barnes [Group of Researchers]
- EmMed\_Detroit [Group of Researchers]
- EmMed\_Duke [Group of Researchers]
- EmMed\_Hahnemann [Group of Researchers]
- EmMed\_MemorialHermann [Group of Researchers]
- EmMed\_Metropolitan [Group of Researchers]
- EmMed\_StLukes [Group of Researchers]
- EmMed\_Truman [Group of Researchers]
- EmMed\_Vidant [Group of Researchers]
- EmMed\_UMMS [Group of Researchers]

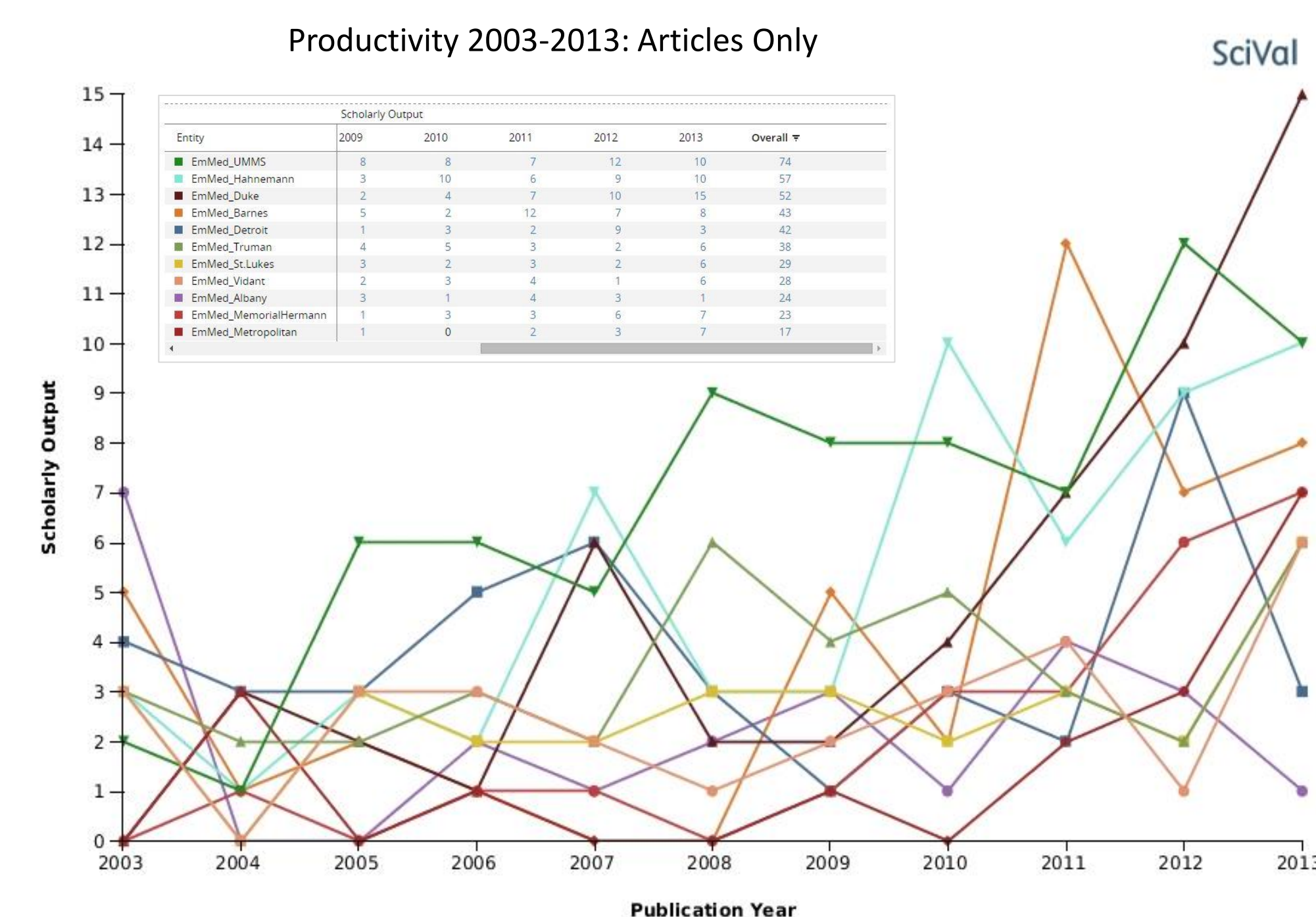


Chart Legend

- EmMed\_Albany [Group of Researchers]
- EmMed\_Barnes [Group of Researchers]
- EmMed\_Detroit [Group of Researchers]
- EmMed\_Duke [Group of Researchers]
- EmMed\_Hahnemann [Group of Researchers]
- EmMed\_MemorialHermann [Group of Researchers]
- EmMed\_Metropolitan [Group of Researchers]
- EmMed\_StLukes [Group of Researchers]
- EmMed\_Truman [Group of Researchers]
- EmMed\_Vidant [Group of Researchers]
- EmMed\_UMMS [Group of Researchers]

The Library's acquisition of Scopus/SciVal provided an opportunity to reach out to the Emergency Medicine Department on research impact. Upon seeing its potential for benchmarking, the Emergency Medicine Department's Director of Research initiated this collaboration. The Library's responsibilities included:

- understanding features and uses of SciVal;
- understanding, explaining, and helping to select metrics;
- creating the research entities and research groups;
- generating and exporting benchmarking data.

Impact 2003-2013: All Publication Types

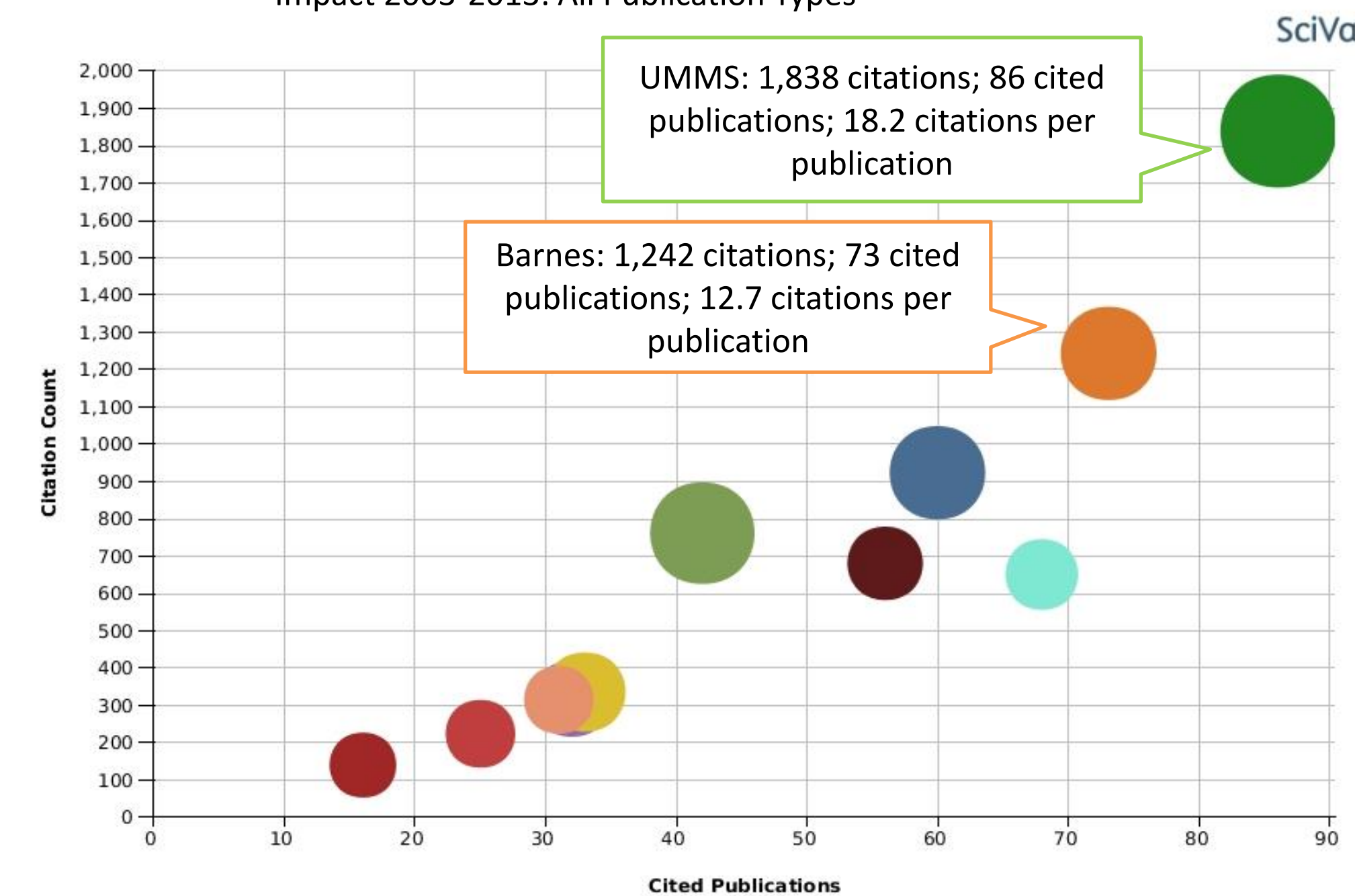


Chart Legend

- EmMed\_Albany [Group of Researchers]
- EmMed\_Barnes [Group of Researchers]
- EmMed\_Detroit [Group of Researchers]
- EmMed\_Duke [Group of Researchers]
- EmMed\_Hahnemann [Group of Researchers]
- EmMed\_MemorialHermann [Group of Researchers]
- EmMed\_Metropolitan [Group of Researchers]
- EmMed\_StLukes [Group of Researchers]
- EmMed\_Truman [Group of Researchers]
- EmMed\_Vidant [Group of Researchers]
- EmMed\_UMMS [Group of Researchers]

Impact 2003-2013: Articles Only

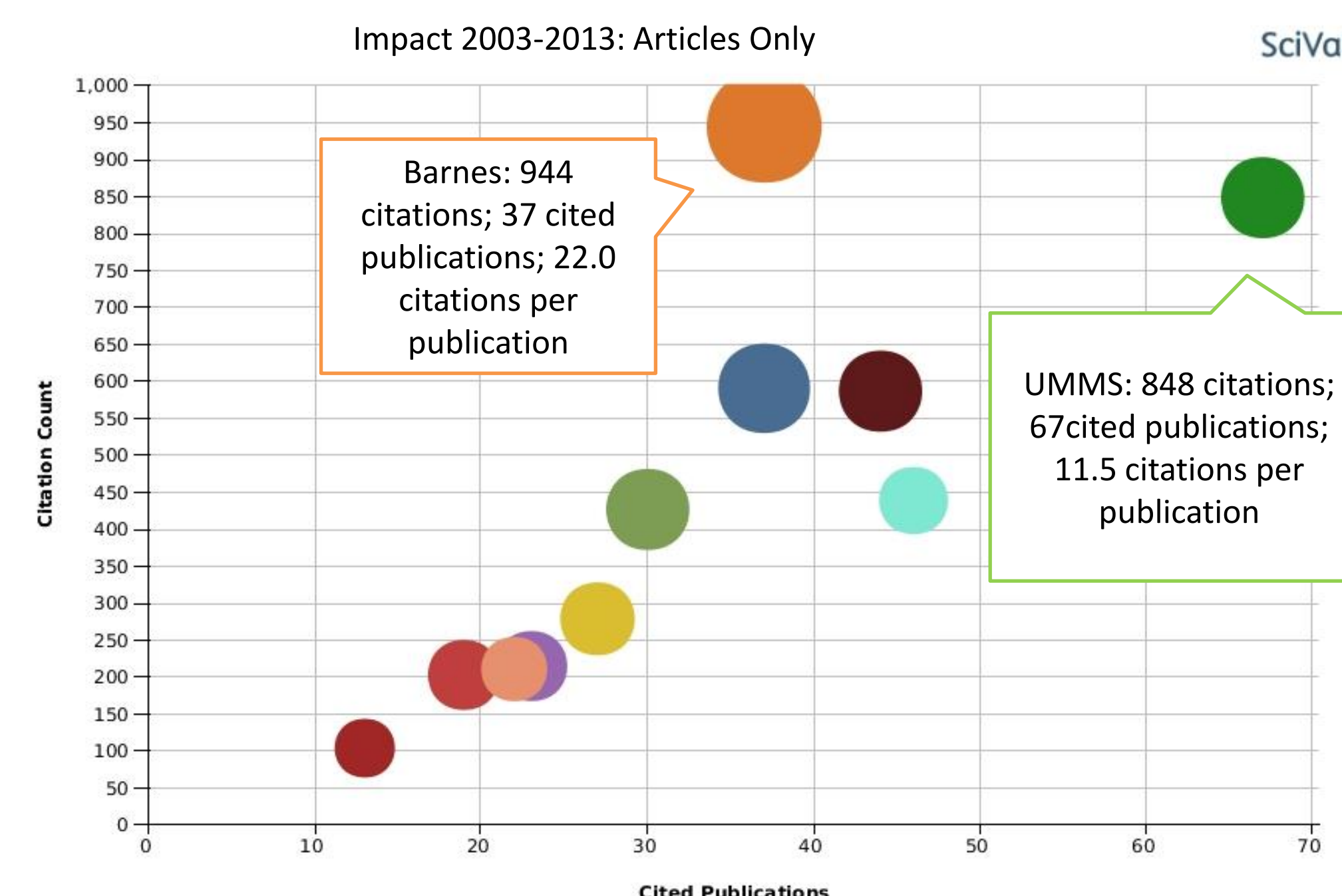


Chart Legend

- EmMed\_Albany [Group of Researchers]
- EmMed\_Barnes [Group of Researchers]
- EmMed\_Detroit [Group of Researchers]
- EmMed\_Duke [Group of Researchers]
- EmMed\_Hahnemann [Group of Researchers]
- EmMed\_MemorialHermann [Group of Researchers]
- EmMed\_Metropolitan [Group of Researchers]
- EmMed\_StLukes [Group of Researchers]
- EmMed\_Truman [Group of Researchers]
- EmMed\_Vidant [Group of Researchers]
- EmMed\_UMMS [Group of Researchers]

## Challenges

Because each research group in SciVal is comprised of individual researchers, the most time consuming and challenging component of this project was selecting and accurately identifying researchers. Random selection was complicated by the fact that some Emergency Medicine faculty are also practicing clinicians; random selection continued until 10 faculty with publication records were identified. Once researchers were identified, ensuring that the correct Scopus author record was chosen was another challenge. Project guidelines were developed to aid in the decision-making process.

SciVal has a suite of 15 metrics for productivity, impact, and collaboration that can be processed alone or in combination for a given entity or entities. To identify the most useful metrics for project, the team reviewed the metrics and selected simple but powerful measures.

## Next Steps

Based on this preliminary work, the Emergency Medicine Department has expanded this project to include all Emergency Medicine Departments in the US. The library has contributed by training the staff working on the expanded benchmarks.

SciVal offers the institution a powerful tool for measuring its impact and benchmarking itself both internally and against its peers.

