

## University of Texas at El Paso

---

From the Selected Works of Dominic Dousa

---

December 21, 2006

### "Onward!" for orchestra

Dominic Dousa, *University of Texas at El Paso*

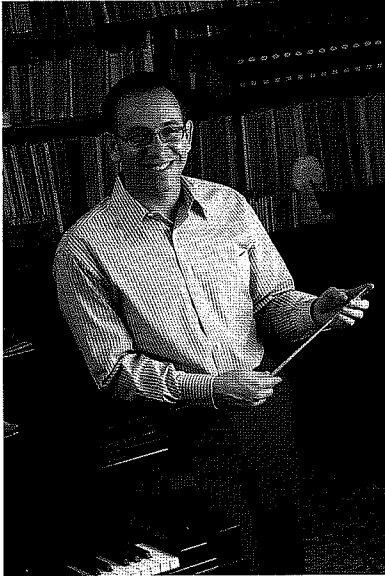


EL PASO SYMPHONY YOUTH ORCHESTRAS  
BENJAMIN LOEB, MUSIC DIRECTOR

The Region's Best Young Musicians

WINTER CONCERT  
Thursday, December 21, 2006  
7:00 PM

# Message from the Music Director



I am excited that you are all here to hear the amazing progress the EPSYOs has made! I am thrilled that in such a short period of time we are able to present now our fourth concert, including more difficult works than ever before.

We are again fortunate to be able to premiere another piece by our Composer-in-Residence, Dominic Dousa. It captures perfectly the progressive and optimistic spirit of the ensemble. The Youth Symphony will also tackle one of Tchaikovsky's first masterpieces, his Symphony #2. Both of the younger groups, the Youth String Philharmonic and the Youth String Ensemble, have made marked improvement, as you will see immediately from the challenging works they will play.

As an example of its high level of achievement, the Youth Orchestra will perform one of Beethoven's greatest and most difficult symphonies, the Eroica. This lengthy and probing work explores all the aspects of the Hero – from his life to his death to the memory of his ideals. They will begin the program with Copland's iconic Fanfare for the Common Man and Bernstein's Overture to Candide.

This program is dedicated to the memory of Earl Swift, one of the EPSYOs' greatest patrons. Impressed with the mission of the orchestra and the scope of the program, he and his wife Terralyn made a substantial gift to the EPSYOs last Spring which enabled us to expand significantly our financial aid program, hire an additional staff conductor and much more. This program is designed to honor Earl Swift's memory through music. All of the pieces depict, in a way, aspects of his character and life, none more so than the Copland and the Beethoven. We are eternally grateful for his support and can only hope that he can serve as a model of future support in the El Paso community.

We must thank the EPISD School Board for their generous extension of the room usage fee waiver for another year. This allows us to use EPISD facilities completely free-of-charge. We have been rehearsing since September at the brand new Jefferson High School Arts wing, which couldn't be better. Not only are the facilities first-rate, but everyone on the faculty and staff at Jefferson, especially Mark Tombosky and David Perez, also have bent over backwards to help and support us.

Again, thank you all for coming to this fantastic concert. If you are a parent of an EPSYOs member, thank you for encouraging your child to participate in one of the best musical experiences they could possibly find in El Paso. We are proud to have the Best Young Musicians from the Region. If you are a member of the EPSYOs, you should be proud to have taken on this position of leadership within the El Paso musical community. Everyone is looking and listening to you for inspiration. For those of you who are here only to enjoy the music, thank you for your presence and applause. You are the reason we perform.

Sincerely,

Benjamin Loeb

# El Paso Symphony Youth Orchestras

Winter Concert

Thursday, December 21, 2006, 7:00 PM

Abraham Chavez Theatre

Benjamin Loeb, Music Director

William Reed, Staff Conductor

## El Paso Youth Orchestra

Fanfare for the Common Man

A. Copland

Overture to Candide

L. Bernstein

## El Paso Youth String Philharmonic

Land of the Roaring Lion

K. Baird

Themes From Waltz of the Flowers

P. Tchaikovsky (arr. J. Caponegro)

Sword Dance

arr. B. Phillips

## El Paso Youth String Ensemble

Sinfonia in G Major, P.8

M. Haydn

Voyage for String Orchestra

J. Corigliano

## El Paso Youth Symphony

Onward! (World Premiere)

D. Dousa

Symphony No. 2 in c minor, "Little Russian"

P. Tchaikovsky

II. Andantino marziale, quasi moderato

IV. Moderato assai

- INTERMISSION -

Symphony No. 3 in E flat Major, "Eroica"

L. van Beethoven

Allegro con brio

Marcia funebre: Adagio assai

Scherzo: Allegro vivace

Finale: Allergro molto

# El Paso Youth String Ensemble (EPYSE)

## VIOLIN I

Mayela Aldaz-Cervantes, Colegio Hispanoamericano  
Sarah Campbell, Hornedo MS  
Amber Chavez, Chapin HS  
Caitlin Dunston, Coronado HS  
Krystel Esquivel, Coronado HS  
Karina Hernandez, Jefferson HS  
Amanda Lujan, Rio Bravo MS  
Taylor Peña, Hornedo MS  
Michael Romagosa, Hornedo MS  
Sophie Rymarowicz, Community Christian School  
Sangbin Whi, Hornedo MS  
Sarah Whi, Polk Elementary

## VIOLIN II

Jazmine Adame, El Chamizal  
Sara Baca, Hornedo MS  
Mary Esmeralda Fuentes, Eastwood MS  
Morielle Haller, Home School  
Annabelle Hayse, Lynn MS  
Andrea Juarez, Guillen MS  
Kimberly Mendoza, Guillen MS  
Debora Molina-Lopez, Bowie HS  
John Muñoz, Home School  
Ricardo Myers, Lincoln MS  
Andrea Sanchez, Eastwood MS  
Kei Takigawa, Hornedo MS

## VIOLA

Sophia Hantzopulos, Wiggs MS  
Othoné Hermosillo, Eastwood MS  
Jahziel Lopez, Ernesto Serna School  
Victor Provencio, Hornedo MS  
Ricardo Rico Jr., Guillen MS

## CELLO

Phillip Benavides, Hanks HS  
Greg Castillo, Chapin HS  
Luis Loya, Chapin HS  
David Tomblin, Hornedo MS  
Thomas Woo, MacArthur School

## BASS

Anthony Camacho, Lincoln MS  
Pablo Fierro, Bowie HS

**Helen of Troy**, a leading producer and marketer of personal care products and hair care products with brand names that are known throughout the world, is committed to a thriving El Paso. Of our 790 employees, 500 work in Helen of Troy's corporate world headquarters on the west side.

The sales, marketing, product development, engineering, creative services, accounting, data processing, and purchasing operations are handled here; over half of the thousands of products we make are shipped from our El Paso warehouse to retailers throughout the United States.

As part of our commitment to the cultural excellence of the community, we are honored to be a sponsor of the El Paso Symphony Youth Orchestra.

# Helen of Troy



# El Paso Youth Symphony (EPYS)

## VIOLIN I

Jesus Rodriguez, Coronado HS, concertmaster  
Mark Manzanares, Franklin HS, asst. concertmaster  
Marisol Cardenas, Slider MS  
Haena Chung, Sierra MS  
Tiffani Griffith, Franklin HS  
Hae-Rin Ma, Hornedo MS  
Veronica Marinelarena, Franklin HS  
Jessica Torres, Franklin HS

## VIOLIN II

Diego Vazquez, Coronado HS, principal  
Antonio Jose Cifuentes, Franklin HS, asst. principal  
Analaura Almeida, Franklin HS  
Jennifer Archuleta, Burges HS  
Rebecca Bard, Coronado HS  
Kiefer Bohn, Covenant Christian Academy  
Rubi Castillo, Americas HS  
Cara Orji, Morehead MS  
David Rubio, Americas HS  
Gabriela Soria, Austin HS

## VIOLA

Ray Arreola, Franklin HS, principal  
Matthew Cox, Coronado HS, principal  
Christopher Alley, Lincoln MS  
Miriam Bustamante, Coronado HS  
Uju Nduka, Franklin HS  
Karen Rodriguez, Hornedo MS  
Zachary Young, Hornedo MS

## CELLO

Cecilia Jensen, Andress HS, principal  
Zoei Hantzopulos, El Paso HS, asst. principal  
Rima Afifi, Morehead MS  
Daniela Armendariz, Franklin HS  
Mitsue Cieslik, Silva Magnet HS  
Lindsey Gerson, Hornedo MS  
Kaylon Griffith, Parkland HS  
Edna Vazquez, Mission Early College HS

## BASS

Meagan Abel, Hornedo MS, principal  
Stuart Anderson, Hornedo MS, asst. principal  
Daniel Dzurko, Hornedo MS,  
Julia Herrera, Henderson MS  
Samir Gupta, St. Clements

## FLUTE

Ana Lisa Acosta, Franklin HS #  
Audrey Gleason, Coronado HS  
Janella Saad, Franklin HS \*  
Maria-Sarah Shin, Franklin HS ^

## CLARINET

Julian Hernandez, Montwood HS ^ #  
Peter Podruchny III, Oñate HS \*

## BASSOON

Cristina Galvez, Del Valle HS ^  
Alexandra Von Wolff, Mayfield HS # \*

## HORN

Crispyn Aldridge, Lincoln MS  
Jared Chumsae, Lincoln MS  
Sebastian Granados, Silva Magnet HS #  
Jorge Tena, Bel Air HS ^ \*

## TRUMPET

Marisol Rodriguez, Mountain View HS ^ #  
Andrew Velazquez, Mountain View HS  
Ernesto Villalobos, Mountain View HS \*

## TROMBONE

Brian Chapman, El Dorado HS ^  
Rudy Martinez, Americas HS \*  
Thomas Corral (bass), Mountain View HS

## TUBA

Jared Lucky, Lincoln MS

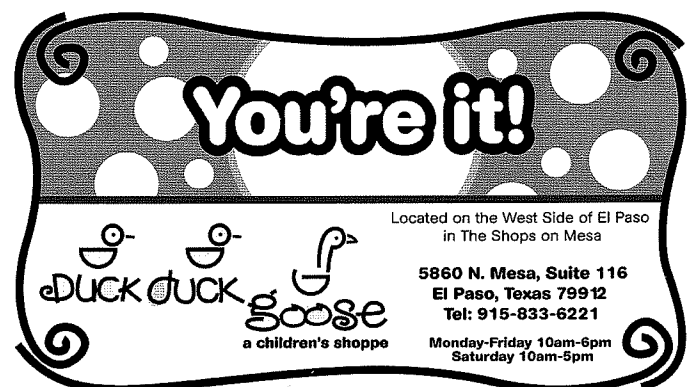
## TIMPANI

Frank Gonzalez, UTEP

^ Principal, Dousa

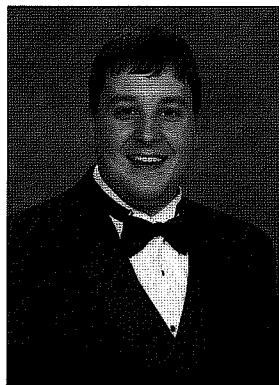
# Principal, Tchaikovsky 2nd movement

\* Principal, Tchaikovsky, 4th movement



He lives in El Paso, Texas with his wife, Quyen and daughter, Anna Sofia. He continues to tour worldwide as conductor and pianist, teaches at the El Paso Conservatory of Music, and conducts the El Paso Symphony Youth Orchestras.

Loeb's far-ranging interests do not limit him to music. He has directed plays, cooked gourmet meals for 65, and played and enjoyed almost every sport. He has tutored over 500 people in test preparation for the Princeton Review. Moreover, he is a lifetime Dallas Cowboys fan.



Born and raised in Abilene, Texas, **William Reed** began his musical studies on the violin at the age of 3. He started studying voice at 13, and soon after began studying conducting. As a student, he was a member of both the Texas All State Orchestra and Chorus, and was the recipient of the UIL State Solo and Ensemble Outstanding Performance Award three years in a row.

William holds a Bachelors in Music in both violin and musical theatre from Oklahoma City University, and a Masters of Music in conducting from Bard College, where he studied under Harold Farberman. William has also studied conducting with Gustav Meier, Otto-Werner Mueller, Carl St. Clair, Rosen Milanov, Benjamin Loeb, and Daniel Lewis. As a violinist, William has participated in masterclasses given by Dorothy Delay, Steven Clapp, and Brian Lewis, and has been a member of the

Abilene Philharmonic, San Angelo Symphony, and Lawton Philharmonic

Prior to moving to El Paso this past fall, William taught orchestra at the West Brook High School in Beaumont, Texas, and was Director of the Beaumont Youth Symphony. He currently teaches at Desertaire Elementary, Dolphin Terrace Elementary, and Northstar Elementary, and performs with the El Paso Symphony.

**Dominic Dousa**, a native of Rochester, Minnesota, joined the faculty of the University of Texas at El Paso Department of Music in August of 2004. He holds degrees in music from Ball State University (D.A., 2003), Central Michigan University (M.M., 2000), and Harvard University (A.B. summa cum laude, 1995) and in statistics from Iowa State University (M.S., 1998). He also has studied composition in Prague (1995-96). His primary composition teachers include Jody Nagel, David Gillingham, Craig Weston and Milan Slavický.



Before coming to UTEP, Dousa held teaching positions at St. Mary's University in Winona, MN (aural skills, music appreciation) and Rochester (MN) Community and Technical College (business & economic statistics). As a graduate student, he also has taught music courses at Ball State University, Anderson (IN) University, and Central Michigan University, and statistics courses at Iowa State University.

Dousa's compositions have received performances in the U.S., Canada, Mexico, Peru, China, the Czech Republic, and Finland. Events where his works have been presented include the 2000 World Saxophone Congress in Montreal, the 7th Annual Bach Festival in Trujillo, Peru (2000), and a concert series in Toluca, Mexico that was sponsored in part by the Mexican Institute of Culture (2001).

Two of Dousa's song cycles, *With a Song in My Heart* and *Six Songs on the Poetry of Langston Hughes*, have been recorded by baritone Gerald J. Blanchard (with Dousa at the piano) and released on the CD "With a Song in My Heart" by Blue Griffin Recording. This CD features art songs set to texts of African American poets.



### Artistic Staff

Benjamin Loeb, Music Director  
William Reed, Staff Conductor  
Dominic Dousa, Composer-In-Residence  
Lesley Chen (EPYSP)  
Adria Dunn (EPYSP)  
Amy Jacquez (EPYSP)  
Nancy Morey (EPYSP)  
Lora Stone Quezada (EPYSP)

### Administrative Staff

Benjamin Loeb, Acting Executive Director  
Lesley Chen, Administrative Director  
Francisco Rodriguez, Administrative Intern

### El Paso Symphony Staff

Sarah Ioannides, Music Director  
Ruth Ellen Jacobson, Executive Director  
Linda Fischer, Business Manager  
Rosemary Flores, Operations Manager  
Diana de la Torre, Ticket Manager  
Pamela Segura, Director of Fund Development

### 2006 - 2007 Guest Artists/Sectional Leaders

Kenny Capshaw, Coronado High School/EPYO  
Diana Gilliland, El Paso High School/EPYO  
Shirley Givens, Juilliard School/Peabody Conservatory  
Tomasz Golka, Conductor  
Susan Hernandez, Franklin High School/EPYO  
Lonnie Klein, Music Director, Las Cruces Symphony  
Joseph Lin, Violin  
Manny Lopez, Harrington String Quartet  
Gloria Mendoza, Burges High School/EPYO  
Joanna Mendoza, Harrington String Quartet  
Kurt Nikkanen, Violin  
Daniel Panner, NYC Opera, Mendelssohn String Quartet  
Stephen Pugh, El Paso Conservatory of Music  
Guillermo Quezada, NMSU/EPYO  
Keith Redpath, Harrington String Quartet  
David Ross, UTEP/EPYO  
Nick Scales, West Texas A&M  
Stephanie Schweigart, UTEP/EPYO  
Bion Tsang, UT Austin  
Sam Trimble, UTEP/EPYO  
Erik Unsworth, UTEP  
Don Wilkinson, UTEP/EPYO

### Board of Trustees

George Saucedo, President  
Kristin Haugland, Secretary  
Linda Chavez  
Paul de la Peña-Franceschi  
Mary O. Garcia  
Garnett Hall  
Richard Oppenheim  
Amy O'Rourke  
Mario Otero  
Wilma Salzman  
Kacy Spivak  
Benjamin Loeb, ex-officio  
Sarah Ioannides, ex-officio  
Ruth Ellen Jacobson, ex-officio

2006 - 2007 Leadership Scholars  
Leadership Scholars are currently  
undergraduates in college, and by  
accepting additional responsibilities  
and by acting as leaders in the  
EPSYOs, they have been awarded  
full tuition.

Jesus Apodaca, UTEP  
Aaron Barbara, UTEP  
Adrian Baule, UTEP  
Julian Bonilla, UTEP  
Frank Gonzalez, UTEP  
Julia Gutierrez, UTEP  
Francisco Hernandez, UTEP  
Michael Hernandez, UTEP  
Steven Montez, UTEP  
Katsuya Morishita, UTEP  
Jennifer Rodriguez, UTEP  
Jessica Shin, NMSU