

The Green Solow Model

William A. Brock*

M. Scott Taylor**

Abstract: We argue that a key empirical finding in environmental economics - The Environmental Kuznets Curve - and the core model of modern macroeconomics - the Solow model - are intimately related. Once we amend the Solow model to incorporate technological progress in abatement, the EKC is a necessary by product of convergence to a sustainable growth path. We explain why current methods for estimating an EKC are likely to fail; provide an alternative empirical method directly tied to our theory; and estimate our model on carbon emissions from 173 countries over the 1960-1998 period.

*Brock: Vilas Professor of Economics, Department of Economics, University of Wisconsin (wbrock@ssc.wisc.edu); **Taylor, Canada Research Chair and Professor of Economics, Department of Economics, University of Calgary, Faculty Research Associate National Bureau of Economic Research, Cambridge, MA. (mstaylor@ucalgary.ca). We thank H. Bohn, B. Copeland, S. Durlauf, J. List, T. Steger, and H. Vollebergh for helpful comments. Research funding was generously provided by the Vilas Trust, NSF SES-0518274 and the SSHRC.

1 Introduction

The goal of this paper is to provide a cohesive theoretical explanation for three puzzling features of the pollution and income per capita data. To do so we introduce the reader to a very simple growth model closely related to the one-sector Solow model. We show how this amended model generates predictions closely in line with U.S. and European evidence on emissions, emission intensities and pollution abatement costs. The model provides an explanation for the sometimes confusing and fragile empirical results present in the literature on the Environmental Kuznets Curve, while offering an alternative testing methodology tightly tied to theory.

Our work is related to recent attempts to explain the Environmental Kuznets Curve (thereafter EKC) but differs in several important ways. First, we attempt to fit more features of the data than just the relationship between pollution emissions and per capita income levels; specifically, we employ data on both pollution abatement costs and emission intensities to argue that key features of the data are largely inconsistent with existing theories. Second, we argue these data are well explained by a very simple variant of the Solow model where technological progress in abatement and diminishing returns to capital play leading roles. By doing so we argue that the forces of diminishing returns and technological progress identified by Solow as fundamental to the growth process, may also be fundamental to the EKC finding. Third, to demonstrate the potential usefulness of our approach we derive an estimating equation directly from theory and evaluate the model using carbon data from 173 countries over the 1960-1998 pre-Kyoto period.

The EKC has captured the attention of policymakers, theorists and empirical researchers alike since its discovery in the early 1990s.¹ The theory literature has from the start focused on developing models that replicate the inverted U shaped relationship. Prominent explanations are threshold effects in abatement that delay the onset of policy, income driven policy changes that get stronger with income growth, structural change towards a service

¹See Grossman and Krueger (1994, 1995) for example.

based economy, and increasing returns to abatement that drive down costs of pollution control.²

While each of these explanations succeeds in predicting a EKC, they are typically less successful at matching other features of the income and pollution data. One key feature of this data concerns the timing of pollution reductions. Models of threshold effects predict no pollution policy at all over some initial period followed by a period of active regulation.³ When policy is inactive, emissions are produced in proportion to output. When policy becomes active, the emissions to output ratio declines sharply and immediately aggregate emissions fall. The available data on pollution emissions is however inconsistent with this strong temporal correction. Emissions per unit output typically decline well before any reduction in aggregate emissions.

A second feature of the data that is difficult to reconcile with many theories is the time series of pollution abatement costs. Theories that rely on rising incomes driving down emissions via tighter pollution policy must square the very large fall in emissions with virtually constant pollution abatement costs. For example U.S. Sulfur Dioxide emissions peaked in 1973 at approximately 32,000 tons and fell almost in half to approximately 17,000 tons in 2001. Correspondingly large changes in emissions per unit output also occurred. But over much of this period, pollution abatement costs as a fraction of GDP or manufacturing value-added, remained small and, most importantly, without much of a positive trend. Theories that rely on tightening environmental policy predict ever increasing costs of abatement, since emissions per unit of output must fall faster than aggregate output to hold pollution in check. In a world without technological progress in abatement, this requires larger and larger investments in pollution control.⁴

²For original contributions see Stokey (1998), Andreoni and Levinson (2001), and Lopez (1994). A review of these and other competing explanations appears in Chapter 2 of Copeland and Taylor (2003).

³This is for example the exact prediction of both Stokey (1998) and Brock and Taylor (2003).

⁴Stokey (1998), Aghion and Howitt (1998) and others adopt an abatement function relating emissions per unit final output, E/Y , to the share of productive factors used in abatement θ , as follows: $E/Y = (1 - \theta)^\beta$, $\beta > 0$. Copeland and Taylor (2003, Chapter 2) show this relationship arises from an assumption on joint production of emissions and output plus constant returns to scale in abatement. For emissions to decline while final output Y grows, E/Y must fall and this implies θ must approach 1. That is, the share of the

Theories relying on strong compositional shifts or increasing returns also have difficulty matching these data. Empirical work has found a changing composition of output plays at most a bit part in the reductions we have observed (Selden et al. (1999), Bruvoll and Medin (2003)). And while increasing returns to abatement may be important in some industries and for some processes, a large portion of emissions come from small diffuse sources such as cars, houses and individual consumptive activity. In each of these cases, increasing returns to abatement seems unlikely. Increasing returns also presents strong incentives for mergers and natural monopoly and unless we bound the strength of increasing returns carefully, increasing-returns-to-scale models predict negative pollution emissions at large levels of output.⁵

To us, the pollution data and the related empirical work on the EKC present three puzzles that need to be resolved by any successful theory. The first puzzle is how do we square the ongoing large reductions in emission intensities with the relatively static pollution abatement costs? The second puzzle is the EKC: what is responsible for the humped-shape profile of pollution levels when graphed against time or income per capita? The third puzzle comes from the empirical literature itself. It is now well known that empirical estimates from EKC style regressions can vary greatly with the sample used and estimation procedure. Do these fragile cross-country empirical results imply that the EKC does not exist, or is the problem the use of empirical methods that are subject to wide variance?

In this paper we show that the Green Solow model provides a very simple explanation for all three puzzles. In addition, the model also suggests an alternative empirical methodology tightly tied to theory. We demonstrate that a robust prediction of the Green Solow model is convergence in emissions per capita across countries. This prediction holds when the

economy's resources dedicated to abatement must rise along the model's balanced growth path and approach one in the limit. The interested reader can verify this by making the translation into Stokey's notation by setting $1 - \theta = z$, and interpreting the gap between Stokey's potential and actual output as the output used in abatement.

⁵The simplest version of Andreoni and Levinson's theory of increasing returns to abatement has the property that pollution becomes negative for some large, but finite level of output. This feature poses problems in dynamic models where output grows exponentially.

pollutant in question follows an EKC pattern to eventually diminish, but importantly also holds if growth is unsustainable and no EKC pattern emerges. This convergence prediction can be evaluated in a number of ways, and indeed there already exists a sizeable empirical literature examining convergence in pollution levels.

In a series of prescient papers John List and a series of coauthors have explored the time series properties of several pollutants to examine convergence in pollution levels across both states and countries. In Stracizich and List (2003) the authors examine the convergence properties of CO₂ over a panel of 21 industrial countries from 1960-1997. Using both cross-country regressions and time series tests the authors conclude there is significant evidence that CO₂ emissions per capita have converged. Additional work by Lee and List (2002) and Bulte et al. (2007) employ more sophisticated time series tests or examine new data sources. Overall, their results demonstrate that there is considerable evidence of convergence in pollution levels across both countries (for CO₂) and across states (for both SO₂ and NO_x) although convergence may be stronger over the last 30 years.⁶

In total there is considerable evidence of convergence in measures of pollution emissions. What the Green Solow model offers to this body of work is a theoretical structure that links the strength of convergence to observable variables, makes explicit and testable connections between theory and empirical work, and offers a new method for learning about the growth and environment relationship. Since our empirical methods are tightly tied to theory we can provide evidence based answers to how differences in savings rates and abatement intensities affects emissions growth rates; how differences in population growth rates affect emissions in both the long and short runs; and how convergence in emissions across the developed and developing world is likely to proceed even absent a Kyoto like agreement.

To provide these answers we borrow from techniques used in the macro literature on in-

⁶Convergence is also apparent in the earlier work of Holtz-Eakin and Selden (1995). These authors examined whether carbon per capita followed an EKC. They found that the carbon EKC turned quite late, if at all, at income per capita levels ranging from 35,000 (1986 U.S. Dollars) to above \$8 million per capita depending on the specification. A key finding was that the marginal propensity to emit (the change in emissions per capita for a given change in income per capita) fell with income levels but that overall emissions were forecast to grow.

come convergence to derive a simple linear estimating equation linking growth in emissions per capita over a fixed time period to emissions per capita in an initial period and a limited set of controls. These controls include typical Solow type regressors such as population growth and the savings rate, but also include a measure of pollution abatement costs. Not surprisingly, our empirical methods owe much to previous work in macroeconomics on conditional and absolute convergence; in particular Barro (1991) and Barro and Sala-i-Martin (1992). The Green Solow model also bears a family resemblance to many other contributions in the theory literature given its close connection to Solow (1956). It is similar in purpose to that of Stokey (1998) but differs because Stokey does not consider technological progress in abatement. It is related to the new growth theory model of Bovenberg and Smulders (1995) because these authors allow for "pollution augmenting technological progress", which is, under certain circumstances, equivalent to our technological progress in abatement. It is perhaps most closely related to our own earlier work (Brock and Taylor (2003), (2005)) where we tried to match data on pollution abatement costs, the EKC, and emission intensities within a modified AK model with ongoing technological progress in both goods and abatement production. This paper grew out of our earlier attempts to match key features of the pollution and income per capita data within the simplest model possible.

The rest of the paper proceeds as follows. Section 2 presents evidence on pollution emissions and abatement costs for the U.S. and European countries. Section 3 sets up the basic model and develops three propositions concerning its behavior. In section 4 we derive an estimating equation and present an empirical implementation using a panel of CO2 data from 173 countries. Section 5 concludes.

2 U.S. and European Evidence

The starting point for our analysis is three observations drawn from U.S. data: emissions per unit of output have been falling for lengthy periods of time; these reductions predate

reductions in the absolute level of emissions; and abatement costs have remained a relatively small share of overall economic activity during the period when emissions fell dramatically. In Figure 1 we plot US data giving emissions per dollar of (real) GDP over the 1940 to 1998 period.⁷ For ease of reading we have adopted a log scale. We plot emission intensities for sulfur dioxide, nitrogen dioxide, particulate matter, carbon monoxide, and volatile organic compounds. There are two features to note: the first is simply that the emission to output ratio is in decline from the start of the period in 1950; the second, is that (given the log scale for emissions per dollar of output) the percentage rate of decline has been roughly constant over the fifty-year period (although it does vary across pollutants).

In Figure 2 we plot the corresponding emission levels for these same pollutants over the same time period. Figure 2 shows a general tendency for emissions to at first rise and then fall over time. Since US income per capita grew substantially over this period, the time scale in the figure could just as well be replaced by income per capita, and hence it offers a strong confirmation of the EKC as found, for example, by Grossman and Krueger (1994, 1995). The EKC pattern is visible in the data for all pollutants except nitrogen oxides that were approaching a peak, and particulates which peaked before the sample period.

It is clear however that the reduction in emission intensities shown in Figure 1 precede the peak level of pollutants in Figure 2 by 25 years for sulfur dioxide, carbon monoxide, and volatile organic compounds. Particulates have however been falling throughout, but the peak for nitrogen oxides occurs approximately 50 years after their emissions per unit output started to decline. If we take the early 1970's as the start of serious pollution regulation, then threshold theories predict an unchanged and therefore horizontal line for the emissions to output ratio until the mid 1970s, and then a steep decline that drives aggregate emissions downward. This is not what Figure 1 and 2 show.

⁷Data on U.S. emissions of the criteria pollutants graphed in Figures 1 and 2 come from the E.P.A. The long series of historical data presented in the figures is taken from the EPA's 1998 report National Pollution Emission Trends, at <http://www.epa.gov/ttn/chief/trends/trends.98>. Because prior to 1985 fugitive dust sources and other miscellaneous emissions were not included in PM10 we have removed these components to make the data comparable over time. Trends reports subsequent to 1998 do not include these long consistent historical series.

In Figure 3 we plot total expenditures (both business and government) on pollution abatement costs per dollar of GDP over the period 1972-1995. These twenty-three years are the only time period where data is available. As shown, pollution abatement costs as a fraction of GDP rise quite rapidly until 1975 and then remain relatively constant. If we consider pollution abatement costs specifically directed to the six criteria air pollutants and scale this by real U.S. output, the ratio is then incredibly small – approximately one half of one percent of GDP - and has remained so for over twenty years (See Vogan (1996)).⁸

To demonstrate that these features of the data are not U.S. specific we present the available evidence from European countries in Table 1. The table presents summary statistics for the average yearly percentage change in emissions per unit GDP over the 1980-2001 period; and where possible, the table indicates when aggregate emissions peaked but in many cases this is prior to the start of the sample as indicated by the entry "< 1980". In the last column we list the average value of pollution abatement costs as a fraction of GDP for these same countries.

There are two remarkable features of the data. The first is the massive reduction in emissions per unit of output over the period. Cross country averages are given in the last line of the table. They show reductions are on the order of 4-5% per year for nitrogen oxides, carbon monoxide, and volatile organic compounds but closer to 10% per year for sulfur. The second feature is, of course, the relatively small pollution control costs shown in the last column. On average these costs are only between 1 and 2% of GDP.

The table also gives, where possible, the peak year for emission levels. In many cases these peaks occur before 1980, and with the exception of Portugal and one pollutant for Ireland, the remaining peaks in emissions occurred in the 1980s or early 1990s. Since emissions are now declining for these pollutants and countries, this European data offers

⁸There is of course considerable controversy over whether these figures represent the full cost of environmental regulation, and they necessarily ignore the significant abatement done prior to the 1970s by cities, utilities, and businesses. For an illuminating historical account of pollution regulation in the US from 1940 to 1970 see Dewey (2000). Dewey details the efforts at pollution control in major US cities such as New York, St. Louis, Pittsburgh and Los Angeles. The analysis shows serious pollution regulation is not a post 1970s phenomena.

strong confirmation that each country pollutant pair exhibits a time profile for emissions consistent with an EKC.⁹

3 The Model

We develop an augmented Solow model where exogenous technological progress in both goods production and abatement leads to continual growth with rising environmental quality. We present the simplest specification where both savings and abatement choices are exogenously set. The fixed savings rate assumption is commonly used in the Solow model and is often innocuous; the assumption of a fixed abatement intensity helps us demonstrate how changes in the intensity of abatement need not play any role in generating an EKC.

Consider the standard one sector Solow model with a fixed savings rate s . Output is produced via a constant returns to scale and strictly concave production function taking effective labor and capital to produce output, Y . Capital accumulates via savings and depreciates at rate δ . The rate of labor augmenting technological progress is given by g .

$$\begin{aligned} Y &= F(K, BL), \dot{K} = sY - \delta K \\ \dot{L} &= nL, \dot{B} = gB \end{aligned} \tag{1}$$

where B represents labor augmenting technological progress and n is population growth.

To model the impact of pollution we follow Copeland and Taylor (1994) by assuming every unit of economic activity, F , generates Ω units of pollution as a joint product of output.¹⁰ The amount of pollution released into the atmosphere will differ from the amount produced if there is abatement. We assume abatement is a constant returns to scale activity

⁹Because, in the words of Andreoni and Levinson, what is now coming down must have first gone up.

¹⁰This approach has been subsequently employed by many authors (Stokey (1998), Aghion and Howitt (1998), etc.). In these other papers, Ω is taken as constant over time and by choice of units set to one. Some authors who adopt this approach refer to the firm's or planner's problem as one of choosing across dirty or clean technologies rather than less or more abatement. These approaches are identical.

and write the amount of pollution abated as an increasing and strictly concave function of the total scale of economic activity, F , and the economy's efforts at abatement, F^A . If abatement at level A , removes the ΩA units of pollution from the total created, then we have pollution emitted equals pollution created minus pollution abated, or:

$$E = \Omega F - \Omega A(F, F^A) \quad (2)$$

$$E = \Omega F [1 - A(1, F^A/F)]$$

$$E = \Omega F a(\theta),$$

$$\text{where } a(\theta) \equiv [1 - A(1, F^A/F)] \text{ and } \theta = F^A/F$$

where the second line follows from the linear homogeneity of A , and the third by the definition of θ as the fraction of economic activity dedicated to abatement. We assume the intensive abatement function satisfies $a(0) = 1$ and note $a'(\theta) < 0$ and $a''(\theta) > 0$ by concavity. Abatement has a positive but diminishing marginal impact on pollution reduction. In some cases we will adopt the specific form $a(\theta) = (1 - \theta)^{1/\epsilon}$ where $1 > \epsilon > 0$.

To combine our assumptions on pollution and abatement with the Solow model, we note that taking abatement into account, output available for consumption or investment Y , then becomes $Y = [1 - \theta]F$. And to match the Solow model's exogenous technological progress in goods production raising effective labor at rate g , we assume exogenous technological progress in abatement lowering Ω at rate $g^A > 0$. Transforming our measures of output, capital and pollution into intensive units, we obtain:

$$y = f(k)[1 - \theta] \quad (3)$$

$$\dot{k} = sf(k)[1 - \theta] - [\delta + n + g]k \quad (4)$$

$$e = f(k)\Omega a(\theta) \quad (5)$$

where $k = K/BL$, $y = Y/BL$, $e = E/BL$ and $f(k) = F(k, 1)$.

3.1 Balanced growth path

Assume the Inada conditions hold for F , then with θ fixed it is immediate that starting from any $k(0) > 0$, the economy converges to a unique k^* as in the Solow model. As the economy approaches its balanced growth path, aggregate output, consumption and capital all grow at rate $g + n$ while their corresponding per capita magnitudes grow at rate g . Using standard notation for growth in per capita magnitudes, along the balanced growth path we must have $g_y = g_k = g_c = g > 0$. A potentially worsening environment however threatens this happy existence. Since k approaches the constant k^* we can infer from 5 that the growth rate of aggregate emissions along the balanced growth path, G_E , is given by:

$$G_E = g + n - g_A \tag{6}$$

The first two terms in 6 represent the scale effect of growth on emissions since aggregate output grows at rate $g + n$ along the balanced growth path. The second term is a technique effect created by technological progress in abatement.

Define sustainable growth as a balanced growth path generating both rising consumption per capita and an improving environment. Sustainable growth is guaranteed by:

$$g > 0 \text{ and } g_A > g + n \tag{7}$$

Technological progress in goods production is necessary to generate per capita income growth. Technological progress in abatement must exceed growth in aggregate output in order for pollution to fall and the environment to improve.

3.2 Diminishing Returns and the EKC

The Green Solow model, although simple, generates a very suggestive explanation for much of the empirical evidence relating income levels to environmental quality. Despite the fact that the intensity of abatement is fixed, there are no composition effects in our one good framework, and no political economy or intergenerational conflicts to resolve, the Green Solow model produces a path for income per capita and environmental quality that traces out an EKC.¹¹

To demonstrate we use the two panels in Figure 4. The top panel plots the growth rate of emissions and capital against capital per effective labor and is very similar to graphical representations of the Solow model. The second follows from the first and plots the level of emissions as a function of capital per effective worker and is very similar to representations of the EKC. To start we need to develop a differential equation for emissions; for concreteness, we assume a constant capital share with $0 < \alpha < 1$, and write emissions at any time t as:¹²

$$E = B(0)L(0)\Omega(0)a(\theta) \exp[G_E t]k^\alpha \quad (8)$$

where $B(0)$, $L(0)$, and $\Omega(0)$ are initial conditions, and G_E was given earlier. Differentiate with respect to time to obtain the growth rate of emissions:

$$\frac{\dot{E}}{E} = G_E + \alpha \frac{\dot{k}}{k} \quad (9)$$

where we note the rate of change of capital per effective worker is simply:

$$\frac{\dot{k}}{k} = sk^{\alpha-1}(1 - \theta) - (\delta + n + g) \quad (10)$$

¹¹Xepapadeas (2005) also notes that technological progress in abatement can generate an EKC pattern. His discussion is brief and appears in a review article as does our first discussion of Green Solow in Brock and Taylor (2005).

¹²The constant capital share assumption lets us solve for the evolution of $k(t)$ explicitly, but has no impact on the results in general.

Using these two expressions we now depict the dynamics in the two panels of Figure 4.

In the top panel of Figure 4 we plot on the vertical axis the rates of change of (α times) capital per effective worker $\dot{\alpha k}/k$ and aggregate emissions \dot{E}/E , and on the horizontal capital per effective worker k . In drawing the figure we have implicitly assumed growth is sustainable. We refer to the negatively sloped line as the savings locus since it is given by $\alpha s k^{\alpha-1}[1 - \theta]$ and shifts with the savings rate s . The savings locus starts at plus infinity and approaches zero as k grows large; therefore, it must intersect the two horizontal lines as shown by points T and B. From 10 it is clear that the vertical distance between $\alpha s k^{\alpha-1}[1 - \theta]$ and the horizontal line with height $\alpha[\delta + n + g]$ is just α times the growth rate of capital per effective worker or $\dot{\alpha k}/k$.

Capital per effective worker is therefore rising at all points to the left of B and falling at all points to the right. As is well known, the intersection at point B gives us the steady state capital per effective worker k^* . Growth is most rapid for small k and falls as k approaches k^* . When the economy enters its balanced growth path, \dot{k} is zero and the economy's aggregate output and capital grow at rate $g + n$.

Since G_E is constant, we conclude from 9 that the growth rate of aggregate emissions inherits most of the properties of the growth rate of capital per worker. Using the same methods we employed to determine the growth rate in k , we note that the vertical distance between the savings locus $\alpha s k^{\alpha-1}[1 - \theta]$ and the horizontal line with height $\alpha[\delta + n + g] - G_E$ equals the percentage rate of change of emissions in \dot{E}/E . This implies, the growth rate of emissions is zero at T, positive to the left of T and negative to the right of T. Transforming this information into a prediction for emission levels it is apparent that point T must represent a turning point in emission levels as shown in the bottom panel of Figure 4. Emission levels are rising to the left of T and falling to the right of T. Under the assumption that growth is sustainable, $G_E < 0$, and point T lies to the left of B: the model generates the EKC profile shown in the lower panel.¹³

¹³An alternative explanation for the reduction in US emissions in the 1970s is the productivity slowdown. While this is certainly a possibility, the productivity slowdown must have differential effects on the rates of

The figure illustrates several features of the model. It shows that if growth is sustainable then T lies to the left of B and the time profile for emission levels depends on the location of $k(0)$ relative to point T. If an economy starts with a small initial capital stock then emissions at first rise and then fall as development proceeds: i.e. we obtain a hump-shaped EKC profile for emissions. If initial capital is larger it is possible that the level of emissions falls monotonically as the economy moves towards its sustainable growth path. When emissions peak depends on the relationship between points T and B. For example, if $-G_E$ is small, then T and B differ very little and emissions will only peak as the economy approaches its balanced growth path which may of course take a very long time. When growth is not sustainable T lies to the right of B and emissions will grow forever even as the economy approaches its balanced growth path. In all cases, the economy's intensity of abatement is constant, and its emissions to output ratio falls - both in and out of steady state - at the constant rate $-g_A$.

It is important to note while the model allows for the possibility that emissions may at first rise and then fall, or they may fall continuously or rise continuously, the growth *rate* of emissions is monotonically declining in k . This is true because the growth rate of emissions is very rapid for countries a long way from point B, and slower for those near B. Even in the unsustainable case, the growth *rate* of emissions falls along the transition path until it approaches its balanced growth path rate from above. We will exploit this property later when we derive an estimating equation predicting convergence in emissions across countries. We record these results as a proposition.

Proposition 1 *If growth is sustainable and $k^T > k(0)$, then the growth rate of emissions is at first positive but turns negative in finite time. If growth is sustainable and $k(0) > k^T$, then the growth rate of emissions is negative for all t . If growth is unsustainable, then emissions growth declines with time but remains positive for all t .*

technological progress g and g_A in order to generate the peak; the timing of the slowdown across all European countries must also be just right to match the peaks of all the European country and pollution pairs; and the robust empirical results we find linking Solow type regressors to carbon emission growth in Section 5 are then difficult to explain.

Proof: See Appendix

Proposition 1 tells us about the shape of the emissions profile but says very little about the level of emissions and the level of income per capita at the turning point T. Although the model is simple, it can be deceptive in this regard. For example, it is a short step from knowing that k^T is unique to a belief that income per capita at the turning point is also unique. Similarly, it is easy to assume that the peak emissions level is the same for countries sharing savings rates, population growth rates, etc. Both of these conjectures are wrong: although k^T is unique, the associated income per capita and emissions level at k^T are not.

Proposition 2 *Economies with identical parameter values but different initial conditions produce different income per capita and emission profiles over time. The peak level of emissions and the level of income per capita associated with peak emissions are not unique.*

Proof: in text.

Proposition 2 offers a simple explanation for the apparent inconsistency between the observation of an EKC in country level data and the fragility of cross-country empirical results. It is now well known that the shape of the estimated EKC can differ quite widely when researchers vary the time period of analysis, the sample of countries, the pollutant, or even the data source. For example, Harbaugh et al. (2002) reconsider Grossman and Krueger's specification and find little support for an EKC using newer updated data. Stern and Common (2001) employ a larger and different sulfur dioxide dataset and find no EKC. And the literature reviews by both Barbier (1997) and Stern (2003) note that published work differs greatly in the estimated turning points for the EKC, the standard errors on turning points are very large, and the results differ widely across pollutants and countries. Criado (2008) comes to similar conclusions. At the same time, plots of raw pollution data for the US and other countries often present a dramatic confirmation of the EKC.

If EKC profiles for even very similar countries are not unique because of differences in initial conditions, then unobserved heterogeneity is surely a problem. Unobserved hetero-

generality could then account for the large standard errors on turning points and the sensitivity of results to the sample.

3.3 Turning Points

To examine the determinants of emissions and income per capita at the peak, we start by writing income per capita at any time t as:

$$y^c(t) = k(t)^\alpha B(0)[1 - \theta] \exp[gt] \quad (11)$$

which is a function of $k(t)$, time, abatement and the initial condition $B(0)$. Denote by $t = T$, the calendar time at which emissions reach their peak. At $t = T$, the economy's capital per effective worker reaches k^T . Solving for the k^T identified in Figure 4 yields:

$$k^T = \left[\frac{s(1 - \theta)}{n + g + \delta - G_E/\alpha} \right]^{1/(1-\alpha)} \quad (12)$$

Next solve the differential equation for $k(t)$ to find:

$$k(t) = [k^{*(1-\alpha)}(1 - \exp[-\lambda t]) + k(0)^{(1-\alpha)} \exp[-\lambda t]]^{1/(1-\alpha)} \quad k^* = \left[\frac{s(1 - \theta)}{n + g + \delta} \right]^{1/(1-\alpha)} \quad (13)$$

As expected $k(t)$ is an exponentially weighted average of initial capital per worker $k(0)$ and its balanced growth path level k^* where the weight given to initial versus final positions is determined by the speed of adjustment $\lambda = [1 - \alpha][n + g + \delta]$. Finally, we now set $k(t)$ equal to k^T to find an implicit equation for the time it takes to reach the peak level of emissions. T is defined by:

$$T : k^T = [k^{*(1-\alpha)}(1 - \exp[-\lambda T]) + k(0)^{(1-\alpha)} \exp[-\lambda T]]^{1/(1-\alpha)} \quad (14)$$

where $k(0) = K(0)/B(0)L(0)$. Rearranging 14 we find:

$$T = \frac{1}{\lambda} \log \left[\frac{k^{*(1-\alpha)} - k(0)^{1-\alpha}}{k^{*(1-\alpha)} - k^T(1-\alpha)} \right] \quad (15)$$

The calendar time needed to reach peak emissions is declining in the convergence speed of the Solow model, λ , increasing in the gap between initial and final capital per effective worker, and is larger the closer is point T to B. Peak emission levels follow similarly.

Putting all this together we can now write income per capita at the peak as:

$$y^c(T) = [k^T]^\alpha B(0)[1 - \theta] \exp[gT] \quad (16)$$

Income per capita at the peak is rising in capital per effective worker at the peak, and rising in the calendar time T needed to reach the peak.

To find peak emissions we use 13 and 8 to find:

$$\begin{aligned} E(t) &= c_0 \exp[G_E t] \left[[k^{*(1-\alpha)}(1 - \exp[-\lambda t]) + k(0)^{(1-\alpha)} \exp[-\lambda t]]^{\alpha/(1-\alpha)} \right] \\ c_0 &= B(0)L(0)\Omega(0)a(\theta) \end{aligned} \quad (17)$$

and hence peak emissions are just:

$$E(T) = c_0 \exp[G_E T] [k^T]^\alpha \quad (18)$$

Peak emissions are rising in the capital intensity of the economy, and when growth is sustainable they are falling in the time to reach peak emissions.

It is now easy to see that if we compare two economies with the same parameters - savings rate, population growth rates, rate of depreciation, rates of technological progress, and capital share - and hence the same k^* , these economies will not share the same income per capita level at their peak level of emissions, nor will they share the same peak level of emissions.

The logic is straightforward although lengthy. Peak emissions are reached when the rate of emissions growth is exactly offset by the rate of technological progress in abatement.

The rate of emissions growth declines monotonically as the economy approaches its balanced growth path; the rate of technological progress in abatement is constant. Therefore, the time T at which these two rates equalize is determined by how far initial capital per effective worker is from its eventual steady state. The further is initial capital from its steady state, the faster is its growth rate and the longer will it be before its growth rate declines to equal the rate of technological progress in abatement.

This logic tells us that the time to peak emissions, T , is longer the smaller is $k(0)$, but T itself is independent of any variation in initial conditions that leaves $k(0)$ unchanged. Consequently if we alter initial conditions slightly by raising the effectiveness of labor in period zero, $B(0)$, but make compensating changes in the labor force or initial capital stock to leave $k(0)$ unchanged, then we will have left T unchanged. But since labor is more productive, income per capita at the peak level of emissions is now higher than otherwise. An exactly analogous argument can be used to show that peak emissions are not unique. Since $\Omega(0)$ plays no role in determining k^T or T ; variations in it alter the peak level of emissions directly via 8.

Since empirical work relates income per capita to emissions and not time as we have here, it is useful to make the connection between our theory and the existing empirical work precise. To do so we note from 13 and 11 that $y^c(t)$ is a strictly increasing function of time. We can therefore invert it finding $t = \phi(y^c)$ and substitute for time in 17. This gives us a parametric relationship between aggregate emissions and income per capita. Establishing the properties of this relationship requires further work that we leave to the appendix, but we note here:

Proposition 3 *There exists a parametric relationship between emissions E and income per capita y^c that we refer to as an EKC. If $k^* > k^T > k(0)$, then emissions first rise and then fall with income per capita. If $k^* > k(0) > k^T$, then emissions fall monotonically with income per capita.*

Proof: See Appendix

3.4 Comparative Steady State Analysis

Most of the empirical work investigating the EKC employs cross country data that includes both developed and developing countries and often both democratic and communist states. Clearly these economies differ in much more than just initial conditions, and this heterogeneity may further confound estimation. To investigate how differences across countries in savings, abatement and rates of technological progress affect emissions growth, we now conduct a comparative steady state analysis.

Consider the role of savings. A change in the savings rate has no effect on the long run growth rate of emissions or output, but it can have an impact on transitional growth and hence an economy's income pollution path. An increase in the savings rate shifts the savings locus rightward raising both T and B in Figure 4. Greater savings raises capital per effective worker in steady state and capital per effective worker at the turning point. If we substitute for k^* and k^T in 15 it is possible to show that an increase in the savings rate delays the time to peak emissions, T . Therefore, an economy with a higher savings rate reaches its peak emissions level at a higher income per capita than otherwise. The intuition is simple. The turning point for emissions rises because higher savings implies more rapid capital accumulation. This in turn means faster output growth and faster emissions growth at any given k . The turning point in emissions is reached when diminishing returns to capital accumulation lowers output growth to such an extent that it now equals $-g_A$. A higher savings rate makes this task harder, and hence k^T and T rises.

An increase in abatement intensity has some quite interesting impacts. A change in the intensity of abatement has no effect on the economy's growth rate, just as differences in savings rates have no long run impact. But an increase in abatement lowers $(1 - \theta)$ and shifts the savings locus leftward and this lowers both T and B . Using 15 we find the time to peak emissions T falls as well. Therefore, a greater abatement intensity implies that peak emissions are reached at a lower level of income per capita than otherwise, and this peak is reached earlier than otherwise. Interestingly, emissions start their decline at a lower

income per capita not because abatement is effective in lowering the level of emissions, but because abatement uses up scarce resources that would otherwise have gone to investment and spurred growth. A higher intensity of abatement, creates a policy induced drag on the rate of transitional growth and it is this impact that lowers k^T . Even though changes in abatement intensity have no effect on long run growth rates, they do affect the time profile for emissions and income.

Finally, consider the impact of changes in technological progress. Start with changes in the rate of progress in abatement, g_A . An increase in g_A , shifts the top line in Figure 4 upwards lowering k^T . This lowers the growth rate of emissions for any k , and likewise lowers the growth rate of emissions in steady state. This change has no effect on the growth rate of output or on k^* . Using 15 we find T is reduced. Putting these results together we find peak emissions are reached at a lower income per capita than otherwise and earlier than otherwise.

Faster technological progress in goods production has less clear cut effects. An increase in g shifts the top line in Figure 4 downward raising T and the bottom line upwards lowering B . The growth rate of aggregate emissions rises at any k , while the growth rate of capital per worker falls at any k . The time to peak emissions could rise or fall, and hence income per capita at the peak may be higher or lower.

A similar result arises from changes in population growth. Population growth lowers steady state capital per worker and this lowers transitional growth in capital per worker at any given k . But population growth raises emissions directly via a scale effect and this raises both emissions growth and the point at which emissions start to fall. Whether this new higher transition point is reached sooner or later in calendar time is indeterminate and hence so too is the associated income per capita.

These results demonstrate that relationship between income and pollution is exceedingly complex in even this the simplest of models. We have in fact identified three qualitatively different sets of determinants. The first set of determinants are initial conditions ($B(0)$ and

$\Omega(0)$) that affect the transition paths for emissions and income but have no effect on steady state magnitudes nor long run growth rates. A second set of determinants (s and θ) affect the transition paths for emissions and income and change steady state magnitudes, but have no impact on long run growth rates. The final set of determinants (g , n , and g_A) affect the transition paths for emissions and income, change steady state magnitudes, and alter long run growth rates of output and emissions.

4 Empirical Methodology

While many authors have been critical of the EKC methodology, very little has been offered as a productive alternative. In this section we present an alternative method to investigate the growth and environment relationship that draws on existing work in macroeconomics.

The Green Solow model contains two empirical predictions regarding convergence in emissions. The first is that a group of countries sharing the same parameter values - savings rates, abatement intensities, rates of technological progress etc. - but differing in initial conditions will exhibit convergence in a measure of their emissions. This is true even though each of these countries would typically exhibit a unique income and pollution profile over time. We will derive an estimating equation below to show that under the assumption of identical parameters values across countries, the model predicts *Absolute Convergence in Emissions per capita* or ACE. The second prediction is that in a world with heterogenous countries we will need to condition on the right country characteristics to find what we will refer to as *Conditional Convergence in Emissions per capita* or CCE.

4.1 Estimating Equation

We start with equation 8 for emissions but rewrite it in terms of emissions per capita $e^c(t) = E(t)/L(t)$, and income per capita, $y^c(t) = F(t)[1 - \theta]/L(t)$. Using standard notation, this gives us:

$$e^c(t) = \Omega(t)a(\theta)y^c(t) \quad (19)$$

where $a(\theta) = a(\theta)/[1 - \theta]$. Differentiating with respect to time yields

$$\frac{\dot{e}^c}{e^c} = -g_A + \frac{\dot{y}^c}{y^c} \quad (20)$$

As shown, growth in emissions per capita is the sum of technological progress in abatement plus growth in income per capita. We make equation 20 operational in three steps. First approximate the growth rate of income per capita and emissions per capita over a discrete time period of size N by their average log changes and rewrite the equation as:

$$[1/N] \log[e_t^c/e_{t-N}^c] = -g_A + [1/N] \log[y_t^c/y_{t-N}^c] \quad (21)$$

To eliminate income growth, we follow Mankiw, Romer and Weil (1992) and Barro (1991) and approximate the discrete N period growth rate of income per capita near the model's steady state via a log linearization to obtain:¹⁴

$$[1/N] \log[y_t^c/y_{t-N}^c] = b - \frac{[1 - \exp[-\lambda N]]}{N} \log[y_{t-N}^c] \quad (22)$$

where b is a constant (discussed in more detail below) and $\lambda = [1 - \alpha][n + g + \delta]$ is the Solow model's speed of convergence towards k^* .

Finally substitute for income growth in 21 using 22 and eliminate initial period income per capita using $y_{t-N}^c = e_{t-N}/\Omega_{t-N}a(\theta)$ from equation 19.

By making these substitutions we obtain a simple linear equation relating changes in emissions per capita across i countries (over a discrete period of length N) to a constant and initial period emissions per capita. Since individual elements making up the constant term are not identified we have no prediction concerning the sign. The growth rate of emissions

¹⁴See our discussion paper Brock and Taylor (2004) for a full derivation.

per capita should however fall with higher initial period emissions per capita. *Ceteris paribus*, a lower emissions per capita e_{t-N}^c corresponds to a lower initial capital per effective worker k_{t-N} . This then implies a rapid rate of growth in aggregate emissions E and hence a rapid rate of growth of emissions per capita. We write this short specification as a simple linear regression with error term μ_{it} .

$$[1/N] \log[e_{it}^c/e_{it-N}^c] = \beta_0 + \beta_1 \log[e_{it-N}^c] + \mu_{it} \quad (23)$$

Somewhat heroic assumptions are needed to estimate 23 consistently with OLS. For example, if we assume countries share the same steady state y^* , then countries can differ only in their initial, and largely unobservable, technology levels Ω_{t-N} and B_{t-N} . Mankiw, Romer and Weil (1992) address this concern by assuming the initial goods technology B_{t-N} differs across countries by at most a idiosyncratic error term. This assumption has however come under severe criticism on both econometric and theoretical grounds (see especially Durlauf and Quah (1999)). One concern is that unobserved variation in initial technologies $B_{i,t-N}$ across i may be correlated with e_{it-N}^c . For example a technologically sophisticated country with a large $B_{i,t-N}$ may have greater emissions per capita by virtue of its greater output per capita.

While unobserved heterogeneity is certainly a possibility, it may pose less of a problem in our context. The reason is simply that a productive goods technology implies a large initial B_{t-N} , while a productive emissions technology implies a small Ω_{t-N} . Therefore, a technologically sophisticated country at $T - N$ may have the same $\Omega_{i,t-N}B_{i,t-N}$ as a technologically backward country at $T - N$ making unobserved heterogeneity in initial technology levels less of a problem. In some circumstances this heuristic argument is exact. Assume initial technology levels are proportional to each country's initial "technological sophistication" at $T - N$. Denote technological sophistication by $S_{i,t-N}$ then $\Omega_{i,t-N} = \alpha/S_{i,t-N}$ and $B_{i,t-N} = \beta S_{i,t-N}$ for some α and β positive. Under this assumption, the product, $\Omega_{i,t-N}B_{i,t-N} = \alpha\beta$, is independent of i .

We invoke this argument to justify a decomposition of the unobservable country specific products $\Omega_{i,t-N}B_{i,t-N}$ into an overall cross country mean we denote by $\overline{\overline{\overline{\overline{\Omega_{t-N}B_{t-N}}}}}$ plus a country specific deviation.¹⁵ We assume these country specific deviations, plus standard approximation error in generating our linear form, are contained in our error term μ_{it} as shown below in our long specification. OLS is consistent if the covariance of μ_{it} and our right hand side variables is zero.

To generate the long specification we need to unbundle the determinants of the steady state. Before doing so, we should be specific about how our empirical method accounts for the three different sets of variables that determine emissions growth. First, as is common to the growth literature, we assume that rates of technological progress are common worldwide. In addition, we condition on population growth rates.¹⁶ Therefore, the set of factors that determines both steady states and the rate of growth along the balanced growth path are accounted for by either assumption or measurement.

Second, the long specification also us to condition on abatement and savings, although abatement in the case of carbon (over this period of time) is effectively zero. Therefore, the set of factors that affect only steady state magnitudes are controlled for in the regression.

Finally, under our assumption that a country's initial technological sophistication across both abatement and production technologies are related, we have reduced the across-country variation in initial conditions. Therefore, under this assumption, differences in initial conditions are accounted for in the estimation.

To generate our long specification it proves useful to adopt as the specific form of the abatement function $a(\theta) = (1 - \theta)^\epsilon$ where $\epsilon > 1$. This formulation follows from a constant returns abatement function, and like all isoelastic functions it is quite useful in empirical work. Then letting s_i , θ_i , and $(n + g + \delta)_i$ be the time-averaged country specific savings

¹⁵The interested reader should note that even when countries share parameter values and satisfy this mean technology requirement, their income pollution profiles are still not unique making EKC estimation problematic.

¹⁶We also follow the literature by ignoring the reliance of λ on population growth rates and estimate a linear specification.

rate, abatement intensity and effective depreciation rate respectively, and substituting for the determinants of y^* we write the long specification as:

$$[1/N] \log[e_{it}^c/e_{it-N}^c] = \beta_0 + \beta_1 \log[e_{it-N}^c] + \beta_2 \log[s_i] + \tag{24}$$

$$\beta_3 \log[1 - \theta_i] + \beta_4 \log[(n + g + \delta)_i] + \mu_{it}$$

$$\beta_0 = g - g_A + \frac{[1 - \exp[-\lambda N]]}{N} [\log \frac{\Omega_{t-N} B_{t-N}}{\bar{\Omega}_{t-N} \bar{B}_{t-N}}]$$

$$\beta_1 = -\frac{[1 - \exp[-\lambda N]]}{N} < 0,$$

$$\beta_2 = [\alpha/(1 - \alpha)] \frac{[1 - \exp[-\lambda N]]}{N} > 0$$

$$\beta_3 = [\alpha/(1 - \alpha) + \epsilon - 1] \frac{[1 - \exp[-\lambda N]]}{N} > 0$$

$$\beta_4 = -\beta_2 < 0$$

$$\mu_{it} = \frac{[1 - \exp[-\lambda N]]}{N} \log \left[\frac{\Omega_{i,t-N} B_{i,t-N}}{\bar{\Omega}_{t-N} \bar{B}_{t-N}} \right]$$

4.2 Data

To conduct our empirical work we employ data on carbon dioxide emissions. While carbon is not a typical pollutant in many regards, it offers an especially good environment for us to

test the model. There are four reasons for examining carbon.

The first is simply that the Green Solow model places very heavy emphasis on the interrelated roles of capital accumulation and technological progress, and very little emphasis on changes in environmental policy. This minor role is captured by the assumed constant abatement cost share, θ . Prior to the late 1990s there was no abatement of carbon, and hence this cost share is effectively constant at the value of zero. Therefore, any tendency towards convergence in the carbon data is not likely to be due to convergence in say environmental policy across countries. In this sense, carbon is an especially clean case to test the forces highlighted by the Green Solow model.

Second, it is virtually impossible to obtain reliable cross-country data on pollution emissions from a broad spectrum of countries over any considerable length of time. The Global Environment Monitoring system offers us reliable data on pollution concentrations worldwide since the mid 1970s, but obtaining similar data on emissions is not possible. This is clearly a problem. Identifying the impact of differences in savings rates and population growth rates on emissions requires significant cross country variation in the data, and any credible test of convergence requires data over long periods of time. Carbon data is available for a broad spectrum of countries over lengthy periods of time.¹⁷

Third, researchers have had great difficulty making sense of the carbon data. There is much disagreement over whether carbon emissions per capita are converging or diverging worldwide.¹⁸ Understanding the dynamics of carbon is also critical to decisions over the appropriate response to global warming. Many of the computable models used to generate business as usual trajectories assume some degree of convergence across countries; if however emissions per capita do not converge or converge only slowly then existing business-as-usual trajectories may be seriously in error.

¹⁷Data on emissions at the U.S. state level could also satisfy this requirement, but the mobility of labor and capital across states introduces further complications.

¹⁸For recent published see Dijkgraaf et al. (2005); a very recent review is "Convergence clubs in per-capita CO2 emissions: who's converging who's diverging" March 2008, Carlos Ordas Criado and Jean Marie Grether, Institute for Research in Economics, Neuchatel Switzerland, mimeo.

Finally, the existing evidence on European and U.S. criteria pollutants shows that pollution emissions are falling across the board for many countries. In contrast, carbon emissions are not trending downward. As a result, carbon offers us the opportunity to disentangle the observation of an EKC like pattern in the data from the less restrictive prediction of convergence.

We collected data on carbon emissions per capita, population growth rates and the investment share of GDP for a group of 173 countries from 1960 to 1998. The period ending date of 1998 was selected to ensure that Kyoto commitments could have little impact on emissions. The period starting date of 1960 and the cross-country coverage was determined solely by data limitations imposed by the Penn World Tables and the World Development Indicators database.

We consider five samples. Sample A contains the 173 countries with data on emissions per capita during the relevant period. We use this sample to estimate our short specification and investigate ACE. Sample B includes only those countries where we can evaluate CCE; i.e. the set of countries that have data on population growth and the investment share of GDP. This reduces the sample to 165 countries. Sample C eliminates OPEC members; while Sample D, excludes all those with a population size less than one million in 1960. Sample E, adds to these restrictions by eliminating countries that are "not rated" by the Penn World Tables.¹⁹

4.3 Results

We present estimates from our short and long specifications in Table 2.²⁰ In the column (A), we report estimates for the short specification using Sample A with 173 countries. In

¹⁹The exclusion of OPEC and small countries from a sample is common in the empirical growth literature. For OPEC, the reason for exclusion is simply that oil extraction and not value-added activities are responsible for most of GDP. For very small countries, their industrial structure often reflects peculiar features such as a financial or trading entrepot. The exclusion of countries on the basis of data quality is also common.

²⁰Following Barro (1991), Durlauf and Johnson (1995) and others we employ heteroscedasticity corrected standard error estimates.

column (B) we introduce the savings rate and effective depreciation term. Data limitations reduce the sample to 165 countries. Column (C) eliminates OPEC countries; column (D) further limits the sample to countries with an initial population of greater than one million persons. Column (E) adds a further requirement that the country must not obtain a score of "D" in the PWT system of grading.

The Green Solow model does surprisingly well in explaining the cross country variation in emissions per capita growth rates. The results from the short version reported in column (A) are confirmed in each subsequent column as we add conditioning variables and alter the sample. Perhaps not surprisingly, the explanatory power rises as we move rightwards in the table with the specification in column E explaining 42 % of the variation. We find a positive and significant role for savings in all columns, while effective depreciation is statistically significant in two of the four specifications. In these cases, its sign is negative as required by theory. In all columns the restriction that $\beta_2 = -\beta_3$ cannot be rejected.

The point estimates are in most cases reasonable and similar to those reported in related empirical work. For example, the implied rate of convergence λ varies from a high of 1.6% in column (E) to a low of .5% per year in column (A). Using the estimates of β_1 and β_2 (from any column) we can solve for the implied share of capital in GDP which is uniformly too large at approximately .7. These two results: a slow rate of convergence and a "too large" capital share are of course the same as those reported by Barro (1991) from an estimation of the standard Solow model.

All together the negative coefficient on initial emissions per capita, the positive role for savings, and the slow rate of convergence all argue that Solow type forces play a major role in determining the growth rate of carbon emissions.

The coefficient estimates also allow us to ask how the high investment rates and fast population growth rates in many developing countries affect the growth rate of their emissions. For example, consider the results presented in column E. Countries within sample E had an average annual growth rate of emissions per capita of 1.97% per year, an average investment

share of 21.3%, and an average population growth rate of 1.54% per year. Consider an increase in the investment share, s , of an "average country" by 10% points to a little over 31%. In the very long run, an increase in the savings rate has no effect on emissions growth or emissions per capita growth. Outside of steady state however a higher savings rate implies faster interim growth to reach a new steady state with higher capital per person. Using the coefficient estimates from column E, this 10% point increase in the savings rate would raise the average country's emissions growth rate by 1.57% per year. This is a significant increase since the average growth rate of emissions per capita over the last thirty years is slightly less than 2% per year.

Alternatively, suppose our average country's population growth doubled from 1.54% to a little over 3%. Again in the very long run, this increase has no effect on emissions per capita growth although it must raise overall emissions growth by 3%. Outside of steady state, a faster growing population lowers capital per person, lowers labor productivity, slows interim growth and should slow emissions per capita growth as well. To find the magnitude of this effect, start with our average country at the mean of the sample. Then a doubling of population growth implies a reduction in the growth rate of emissions per capita by .6% per year. Emissions per capita growth falls with faster population growth, although this effect is temporary. Growth in overall emissions rises both in the transition period and forever. During the transition, overall emissions rise by approximately 1% per year; while rising the full 1.54% in the long run.

Alternatively consider the thought experiment of lowering population growth to zero from its current mean. Emissions per capita growth would rise by .83%, and overall emissions growth would only fall by .17% per year in the interim. In the very long run, emissions growth would fall by 1.54% but the short run out-of-steady-state impact is very very small.

The purpose of this exercise and these results was to demonstrate that the forces highlighted by the Green Solow model are significant determinants of emissions growth. In contrast to earlier work documenting a finding of convergence in emissions growth or levels, our ap-

proach offers a potential window into the determinants of growth and the roles played by investment, population growth and abatement behavior.

5 Conclusion

This paper presented a simple growth and pollution model to investigate the relationship between economic growth and environmental outcomes. A recent and very influential line of research centered on the empirical finding of an EKC has, for the last fifteen years, dominated the way that economists and policymakers think about the growth and environment interaction. Numerous empirical researchers have sought to validate or contradict the original EKC findings by Grossman and Krueger (1994, 1995), while theorists have contributed to this explosion of research by presenting a myriad of possible explanations for the empirical result.

This paper makes three contributions to this line of enquiry. First and foremost it suggests that the most important empirical regularity found in the environment literature - the EKC - and the most influential model employed in the macro literature - the Solow model - are intimately related. While one hesitates to see "Solow everywhere", we have argued that the forces of diminishing returns and technological progress identified by Solow as fundamental to the growth process, may also be fundamental to the EKC finding.

In support of our argument we marshalled several pieces of evidence. We presented evidence that the U.S. emission to output ratio has fallen at a roughly constant rate for almost 50 years; that this reduction predates the peak of emission levels; and that abatement expenditures while growing since the early 1970s have remained a fairly constant and small fraction of economic activity. These data are in many cases inconsistent with current explanations for the EKC.

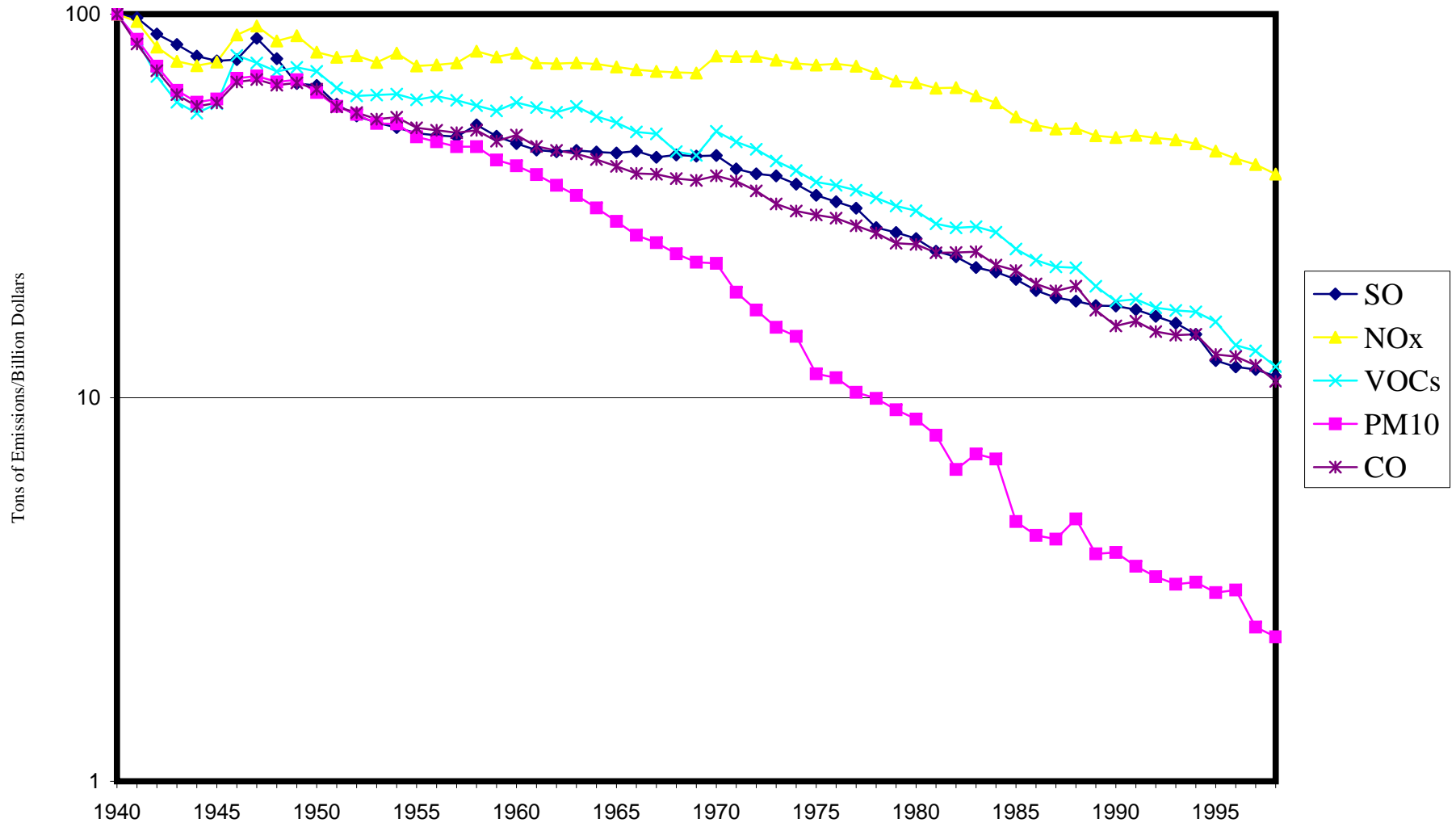
Our second contribution was to develop a simple extension of the Solow model where the interplay of diminishing returns to capital formation and technological progress in abatement

produced a time profile for emissions, abatement costs, and emissions to output ratios that are in accord with U.S. and European data. We also argued that this model could provide a natural explanation for the sometimes confusing and heterogenous results found in the empirical literature.

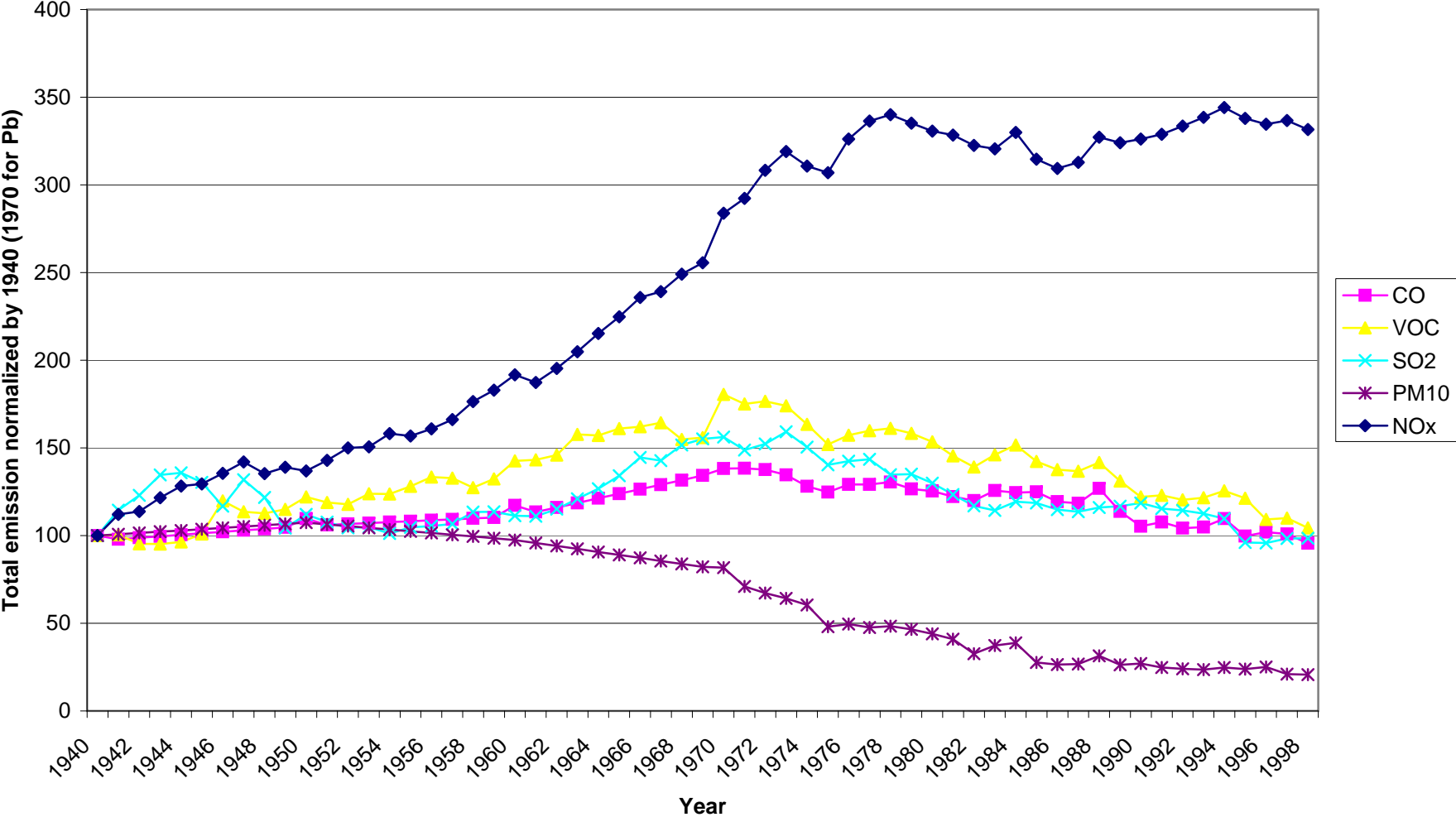
Finally we developed an empirical methodology that flowed very naturally from our model. By exploiting known results in the macro literature we developed a simple estimating equation predicting convergence in emissions per capita across countries. The model produces several testable restrictions and offers us a new method to learn about the growth and environment relationship. Our empirical evidence is quite strong, and our coefficient estimates provided evidence-based answers to several important questions concerning the evolution of carbon emissions across countries.

Despite these successes there is still much we do not know. How important is the role of technological progress in abatement? How much of the technological progress that we have taken here as exogenous is induced by tightened government policy - how much is the product of firm level efforts to reduce energy costs? In order for us to understand more about the growth and environment relationship, future research in this area must maintain the tight connection from theory to empirical work we have established here, while moving beyond the simplified world of the Green Solow model.

Figure 1
Emission Intensities
1940=100



**Figure 2:
Total National Emissions by Pollutant and Year**



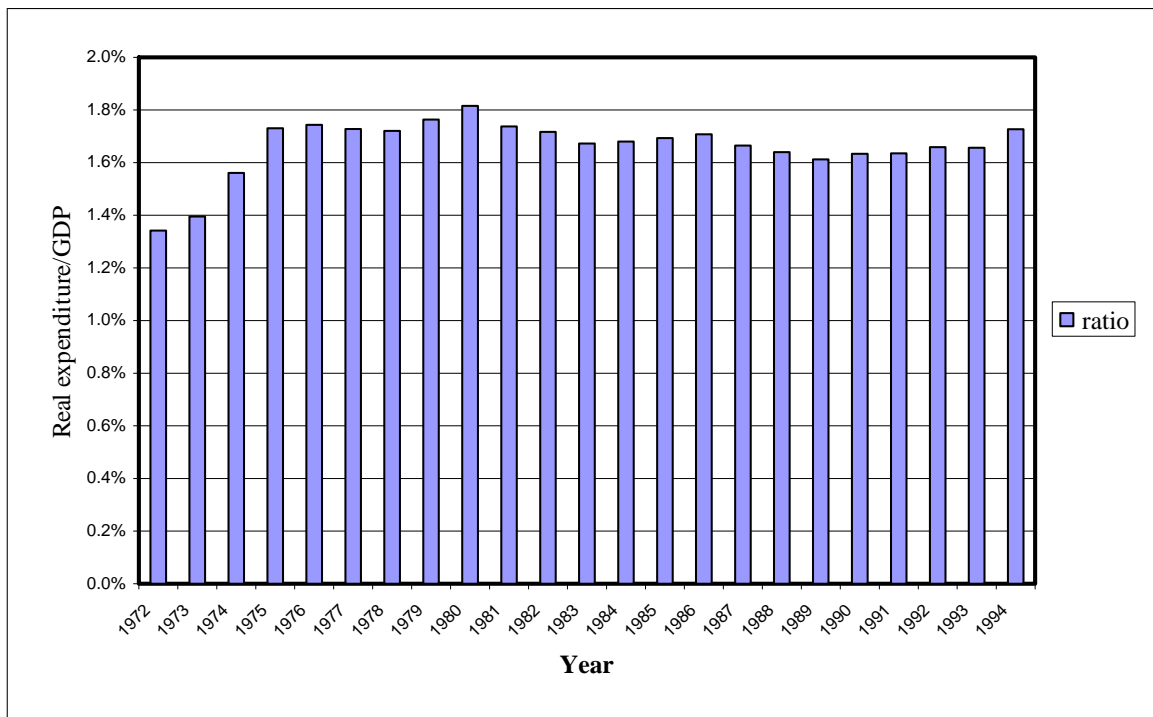


Figure 3: US Abatement costs/GDP

Table 1: European Evidence

Countries	NO _x	Peak	SO _x	Peak	CO	Peak	VOC	Peak	θ Share
Austria	-2.8	<1980	-13.4	<1980	-5.5	<1980	-4.2	1990	1.6
Finland	-3.8	1990	-11.6	<1980	-2.9	<1980	-3.8	1990	1.4
Czech Rep.	-7.6	<1980	-18.6	1985	-4.8	1990	-6.5	1990	2.0
France	-3.8	<1980	-10.0	<1980	-6.4	<1980	-4.2	1985	1.2
Germany	-5.4	<1980	-3.1	<1980	-7.0	<1980	-2.6	1985	1.6
Italy	-2.7	1990	-9.5	<1980	-3.7	1990	-3.8	1995	.9
Ireland	-2.7	2000	-7.8	<1980	-7.0	1990	-6.3	1990	.6
Poland	-7.5	1985	-9.9	1985	-10.1	1990	-6.6	<1980	1.6
Slovak Rep.	-4.7	1990	-10.0	<1980	-4.2	1990	-7.5	1985	1.5
Sweden	-4.2	1985	-12.1	<1980	-3.4	1990	-5.1	1985	1.0
Switzerland	-4.4	1985	-9.5	<1980	-6.9	<1980	-5.1	1985	2.1
Netherlands	-4.1	1985	-10.6	<1980	-6.5	<1980	-6.1	<1980	1.7
Hungary	-3.0	<1980	-7.7	<1980	-3.7	<1980	-2.3	1985	.6
Portugal	1.0	2000	-2.5	1999	-3.4	1995	1.1	1997	.6
U.K.	-4.5	<1980	-9.4	<1980	-5.9	<1980	-4.9	1990	1.5
Average	-4.0	n.a.	-9.7	n.a.	-5.4	n.a.	-4.5	n.a.	1.3

Notes: Data on particulates is unavailable. Table 1 is constructed using three data sources. Data on European pollution emissions comes from the monitoring agency for LRTRAP available at <http://www.emep.int/>. Real GDP data is taken from the World Bank's Development Indicators 2002 on CD Rom. Pollution abatement costs are taken from the 1996 and 2003 OECD publications "Pollution abatement and control expenditures in OECD countries", Paris: OECD Secretariat. See the appendix to our discussion paper Brock and Taylor (2004) for details on construction.

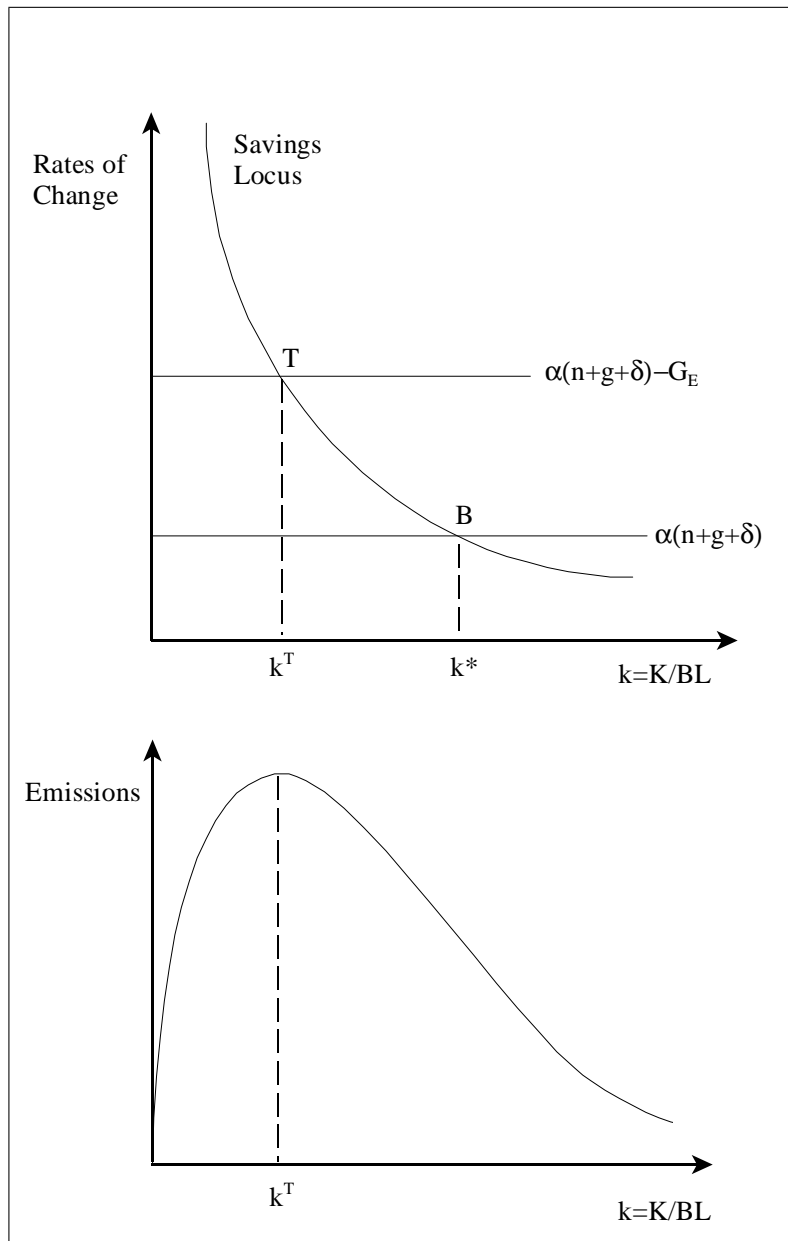


Figure 4: The Green Solow Model

Table 2: Carbon Convergence Across the World

Variables	(A)	(B)	(C)	(D)	(E)
cons	.021	-.105	.005	-.005	-.049
	(11.6)	(-2.0)	(.13)	(-.12)	(-.87)
$\log e_{t-N}^c$	-.005	-.007	-.008	-.011	-.012
	(-5.6)	(-5.8)	(-5.9)	(-6.6)	(-6.7)
$\log s$..	.029	.023	.035	.041
	..	(3.4)	(2.5)	(3.9)	(4.3)
$\log(n + g + \delta)$..	.019	-.029	-.045	-.031
	..	(.93)	(-1.9)	(-2.4)	(-1.35)
No. obs	173	165	151	118	98
Adj. R ²	.14	.29	.31	.35	.42

Notes: t-statistics are in parentheses. Each column estimates a version of our long specification under various restrictions.

$$[1/N] \log[e_{it}^c/e_{it-N}^c] = \beta_0 + \beta_1 \log[e_{it-N}^c] + \beta_2 \log[s_i] + \beta_3 \log[(n + g + \delta)_i] + \mu_{it}.$$

The dependent variable is the average growth rate in log emissions per capita over the 1998-1960 period. e_{t-N}^c is emissions per capita in 1960, s is the average investment to GDP ratio over the 1960-1998 period, and $(n + g + \delta)$ is average population growth over the period plus .05.

6 Appendix

Proposition 1. Proof: From 9 and 4 the growth rate of emissions is declining in k . By definition emissions growth is zero at k^T . Therefore, if $k^T > k(0)$ growth is positive but declines with k ; if $k^T < k(0)$ growth is negative and declines with k . When growth is sustainable $k^T < k^*$. The solution for $k(t)$ in 13 shows k^T is reached in finite time from $k(0) < k^T$. If growth is not sustainable, $k^T > k^*$. The solution for $k(t)$ shows it converges to k^* as time goes to infinity. This implies $k^T > k^*$ always, and by definition of k^T emission growth remains positive.

Proposition 2. Proof in the text

Proposition 3. Proof: We note from the text that

$$\begin{aligned} E(t) &= c_0 \exp[G_E t] \left[[k^{*(1-\alpha)}(1 - \exp[-\lambda t]) + k(0)^{1-\alpha} \exp[-\lambda t]]^{\alpha/(1-\alpha)} \right] \\ y^c(t) &= k(t)^\alpha B(0) [1 - \theta] \exp[gt] \end{aligned}$$

We have already shown that for any $k(0) < k^*$, $k(t)$ is increasing in time. Given the properties of exp we can then conclude that $y^c(t) = [1 - \theta]k(t)^\alpha B(0) \exp[gt]$ is strictly increasing in time when the conditions of the proposition are met. This allows us to invert and obtain $t = \varphi(y^c)$ where $\varphi' > 0$. Substitute for time in $E(t)$. Now differentiate this parametric function $E(\varphi(y^c))$ with respect to y^c to obtain $E'(\varphi(y^c))\varphi'(y^c)$. Note that if $k^* > k^T > k(0)$ then $E'(\varphi(y^c))$ is positive for $t < T$, zero at $t = T$, and negative for $t > T$. $\varphi'(y^c)$ is always strictly positive and hence emissions at first rise and then fall with income per capita. If $k^* > k(0) > k^T$, then $E'(\varphi(y^c))$ is always negative. This implies $E'(\varphi(y^c))\varphi'(y^c)$ is always negative as required.

7 References

Aghion, P. and P. Howitt (1998), *Endogenous Growth Theory*, MIT Press, Cambridge, MA.

Andreoni, J. and A. Levinson (2001), "The Simple Analytics of the Environmental Kuznets Curve", *Journal of Public Economics*, 80:269-86.

Barbier, E.B. (1997), "Introduction to the environmental Kuznets curve special issue", *Environment and Development Economics* 2, 369-381.

Barro, R.J. (1991), "Economic Growth in a Cross Section of Countries", *Quarterly Journal of Economics*, 106, 407-443.

Barro, R.J. and X. Sala-i-Martin (1992), "Convergence across States and Regions", *Brookings Papers on Economic Activity* 1, 107-182.

Bovenberg, A.L. and S. Smulders (1995), "Environmental Quality and pollution augmenting technological change in a two sector endogenous growth model", *Journal of Public Economics*, 57, 369-391.

Brock, W.A. and M. Scott Taylor, (2003), "The Kindergarten Rule of Sustainable Growth", NBER working paper no. 9597, Cambridge, MA.

Brock, W.A. and M. S. Taylor (2005), "Economic Growth and the Environment: A Review of Theory and Empirics", *Handbook of Economic Growth*, Vol 1B, P. Aghion and S. Durlauf eds. Elsevier B.V.

Brock, W.A. and M. S. Taylor (2004), "The Green Solow Model", *Social Sciences Research Institute Working Paper No. 2004-16*, University of Wisconsin, Economics Department.

Bruvoll, A. H. Medin (2003), "Factors behind the environmental Kuznets curve: a decomposition of the changes in air pollution", *Environmental and Resource Economics*, 24, 27-48.

Bulte, E., J.A. List and M.C. Strazicich (2007), "Regulatory Federalism and the Distribution of Air Pollutant Emissions", *Journal of Regional Science*, 47, No. 1, 155-178.

Copeland, B.R. and M.S. Taylor (1994), "North-South Trade and the Global Environ-

ment", *Quarterly Journal of Economics*, 109:755-87.

Copeland, B.R. and M. S. Taylor (2004), "Trade, Growth and the Environment", *Journal of Economic Literature*, March, 7-71.

Copeland, B.R. and M. S. Taylor (2003), *Trade and the Environment: Theory and Evidence*, Princeton University Press, Princeton, NJ,.

Criado, C. (2008), "Temporal and spatial homogeneity in air pollutants panel EKC estimations", forthcoming in the *Environmental and Resource Economics*.

Dewey, S.H. (2000), *Don't Breathe the Air: Air Pollution and U.S. Environmental Politics: 1945-1970*, No. 16, *Environmental History Series*, D.L. Flores, editor, Texas A&M publisher, College Station, TX.

Dijkgraaf, E., B. Melenberg, and H.R.J. Vollebergh (2005), "A Test for Parameter Homogeneity in CO2 Panel EKC Estimations", *Environmental and Resource Economics*, 2005, 32: 229-239.

Durlauf, S.N. and P.A. Johnson, (1995), "Multiple Regimes and Cross-Country Growth Behaviour", *Journal of Applied Econometrics*, Vol. 10, 365-384.

Durlauf, S. and D. Quah, (1999), "The New Empirics of Economic Growth", *Handbook of Macroeconomics*, North Holland, J. Taylor and M. Woodford eds.

Grossman, G.M. and A.B. Krueger (1994), "Environmental Impacts of a North American Free Trade Agreement" in P. Garber (Editor) *The US-Mexico Free Trade Agreement*, MIT Press, Cambridge MA.

Grossman, G.M. and A.B. Krueger (1995), "Economic growth and the environment", *Quarterly Journal of Economics*, 110, 353-377.

Harbaugh, W., A.M. Levinson, and D.M. Wilson (2002), "Reexamining the empirical evidence for an environmental Kuznets curve", *Review of Economics and Statistics*, 84, 541-551.

Holtz-Eakin, D. and T.M. Selden (1995), "Stoking the fires? CO2 emissions and economic growth", *Journal of Public Economics*, 57, 85-101.

Lee, J. and J.A. List (2002), "Examining Trends of Criteria Air Pollutants: Are the effects of government intervention transitory", mimeo June.

List, J.A. (1999), "Have Air Pollutant Emissions converged amongst US Regions? Evidence from Unit root Tests", Southern Economic Journal 66, 144-155.

List, J.A. and C.A. Gallet, (1999), "The environmental Kuznets curve: does one size fit all?", Ecological Economics, 31, 409-423.

Lopez, R. (1994). "The Environment as a Factor of Production: Economic growth and trade liberalization", Journal of Environmental Economics and Management 27:163-84.

Mankiw, N.G., D. Romer and D.N. Weil (1992), "A Contribution to the Empirics of Economic Growth", Quarterly Journal of Economics 107, 407-438.

Selden, T.M., A.S. Forrest, J.E. Lockhart (1999), "Analyzing reductions in U.S. air pollution emissions: 1970 to 1990", Land Economics, 5,1-21.

Solow, R.M.(1956) "A Contribution to the Theory of Economic Growth", Quarterly Journal of Economics, LXX, 65-94.

Stern, D.I., (2003), "The Rise and Fall of the Environmental Kuznets Curve", Rensselaer Polytechnic Institute, Working Paper No. 0302, October.

Stern, D.I. and M.S. Common (2001), "Is there an environmental Kuznets curve for sulfur?" Journal of Environmental Economics and Management, 41, 162-178.

Stokey, N., (1998), "Are there Limits to Growth", International Economic Review, vol. 39, No. 1, 1-31.

Strazicich, M. C. and John List (2003), "Are CO2 Emission levels converging among Industrial countries", Environmental and Development Economics, 24, 263-271, 2003.

Xepapadeas, A. (2005), "Economic Growth and the Environment", Chapter 23 in Handbook of Environmental Economics, J. Vincent and Karl Goran Maler eds. Vol. 3, 1219-1271. North-Holland: Amsterdam.

Vogan, C.R. (1996) "Pollution Abatement and Control Expenditures:1972-94", Survey of Current Business, Sept. 48-67.