



BOISE STATE UNIVERSITY

# Library Instruction Using Mobile Devices



**Barbara Glackin**

Associate Dean  
Boise State University  
Albertsons Library

[barbaraglackin@boisestate.edu](mailto:barbaraglackin@boisestate.edu)



**Amy Vecchione**

Digital Access Librarian  
Boise State University  
Albertsons Library

[amyvecchione@boisestate.edu](mailto:amyvecchione@boisestate.edu)  
[@librarythinking](#)



**Amber Hoye**

Instructional Design Consultant  
Boise State University  
Academic Technologies

[amberhoye@boisestate.edu](mailto:amberhoye@boisestate.edu)



BOISE STATE UNIVERSITY

iPod 3:04 PM

Back Challenge Done

Albertsons Library 1910 University Drive

**+2 Databases Galore!!**

On the library website find click on the Articles Databases, then find the drop down menu, chose a topic of interest or your major & submit name of 1st database

137

academic search premier

Go

Q W E R T Y U I O P  
A S D F G H J K L  
↑ Z X C V B N M ↵  
. ? 1 2 3 space Send

iPod 3:03 PM

Back Challenge Flag

Albertsons Library 1910 University Drive

f Post to Facebook t Post to Twitter

**+2 Bronco Print**

Well done! You just earned 2 points!

What else is going on here

iPod 3:02 PM

Back Challenge Done

Albertsons Library 1910 University Drive

**+5 Meet your librarian**

What's your hardest class this semester? Find the liaison librarian for that discipline. Text/type in his/her name and office number.

142

Amy Vecchione 109b

Go

Q W E R T Y U I O P  
A S D F G H J K L  
↑ Z X C V B N M ↵  
. ? 1 2 3 space Send



- iPads for every librarian
- University Mobile Learning Initiative
- mLearning Scholars
  - Library support
- iPads for all library staff



Does your library provide iPads to staff?

Respond using this tool.



- A. Yes, to all.
- B. Yes, to some.
- C. No, not yet.



# Research Race: Question #7

## Looking up an Article

A lot of our articles are available online. You can use our mobile site to quickly and easily get full text articles on your topic. Scan this QR code or type in this URL to watch a quick video about locating articles in a database.

Then, go to the database Academic Search Premier, and search for the keywords: Henrietta Lacks. How many search results do you get? Answer the question on your Research Race game sheet.

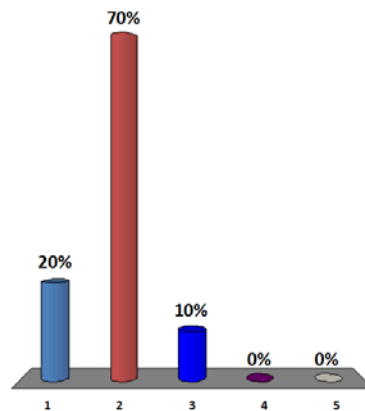


<http://bit.ly/nb4Dsqq>



Gale Virtual Reference Library is easy to use.

1. Strongly Agree
2. Agree
3. Neutral
4. Disagree
5. Strongly Disagree



Gale Virtual Reference Library contains...



1. eBooks
2. Articles
3. Encyclopedias
4. Videos



Does your library provide mobile instruction?

Respond using this tool.



- A. Yes!
- B. Some of us do, some of us don't.
- C. No, not yet.



# Foundational Studies Program

- Integrated learning experience replacing the core curriculum
- . . . “a shared experience that unifies our diverse student body and expands students’ awareness of themselves and their world.”
- Implemented Fall 2012
- <http://academics.boisestate.edu/fsp/>





# University Foundations Courses

- UF 100 (First Year experience) – Intellectual Foundations
- UF 200 (Second Year experience) – Civic and Ethical Foundations
- UF 300 (Transfer Student experience)
- Communication in the Disciplines (Third Year)
  - Focused on written and oral communication
- Finishing Foundations (Fourth Year)
  - Culminating experience



# Library and University Foundations

- University-wide initiative
- “Lead” faculty teams created to develop UF 100, 200, and 300 curriculums
- Library liaison as team member





Opportunity to directly interact with  
every new student on campus  
during their first year on campus  
simply could not be missed!



Does your library provide instruction to all of your students?

Respond using this tool.



- A. Yes, we do!
- B. We are working on it!
- A. No.





BOISE STATE UNIVERSITY

# Campus ready for Mobile!





# Library Curriculum Development

- Single library instruction curriculum
- Use active learning techniques (POGIL)
- Students learn together in teams
- Campus Read book
- Library sessions scheduled in consecutive weeks



# Library Curriculum

## UF 100

- Session 1 – Finding information (Academic Search Premier)
- Session 2 – Evaluating information (peer-review, CRAAP\* test, websites)

\*California State University Chico, Miriam Library Research Station -

<http://www.csuchico.edu/lins/handouts/evalsites.html>

C = Currency, R = Relevance, A = Authority,

A = Accuracy, P = Purpose

## UF 300

- Session 1 – Finding information (Academic Search Premier)
- Session 2 – Evaluating information (peer-review, CRAAP\* test, websites)
- Session 3 – Advanced search techniques (Web of Science)



# Library Curriculum Design

- Shared instruction script
- Students' exploring and learning
- Library instruction session
  - Introduction
  - Demonstration or discussion of activity
  - Student teams
  - Time limit
  - Discuss concepts learned





# Implementation

- Scalability and sustainability
- Scheduling
- Go to the students
- No librarian

	18-Sep		
Session 2	UF 300 9:00-9:45 Latta (ILC 204)	5 (40)	Carrie
Session 2	UF 300 1:30-2:15 Latta (ILC 302)	5 (40)	Kelsey/Melissa
Session 1	12:30-1:15 Morgan/Morgan (ILC 213)	4 or 5 (25)	Carrie
Session 1	12:30-1:15 Morgan/Focarile (Multip 210)	4 or 5 (25)	Memo
Session 1	12:30-1:15 Morgan/Eltayeb (Educ 318)	4 or 5 (25)	Michelle
Session 1	2:00-2:45 Morgan/Wadley (ILC 213)	4 or 5 (25)	Marilia
Session 1	2:00-2:45 Morgan/Patchin (Educ 223)	4 or 5 (25)	Megan
Session 1	2:00-2:45 Morgan/Hale (Educ 317)	4 or 5 (25)	Beth
Session 2	3:30-4:15 Stockton/Pearson (Lib201C)	8 (24)	Carolyn
Session 1	3:30-4:15 Morgan/Hale (ILC 213)	4 or 5 (25)	Marilia
Session 1	3:30-4:15 Morgan/Patchin (Educ 223)	4 or 5 (25)	Ellie/Kelsey
Session 1	3:30-4:15 Morgan/Bates (Educ 317)	4 or 5 (25)	Memo
Session 2	5:00-5:45 Stockton/Pearson (Lib201C)	8 (24)	Megan
Session 1	6:00-6:45 Stieha/Stieha (ILC 213)	4 or 5 (25)	Margie
Session 1	6:00-6:45 Stieha/Bickerton (Educ 223)	4 or 5 (25)	Carolyn

interact with same student group twice

- Student teams use iPads
- Librarians use iPads to teach



# Logistics

- Mobile devices
  - 30 iPad 1s repurposed from eProject
  - 30 iPad 3s purchased for instruction
  - 30 netbooks used as scheduling required
  - 12-18 iPads 'borrowed' from Circulation
- Librarians practice teaching sessions
- Using mobile devices in the classroom





# Instructional support logistics

- Staff person assigned to 'build' instruction carts ; assigned back-up
- Carts (book trucks, luggage carts)





# iPad logistics

- Image (and reimage) iPads
  - Apple Configurator, 7 port Belkin hub, “master” configuration
- iPad battery life and charging
- Imaging and charging stations
- Google calendar – schedule mobile devices
- Timing between classes; swapping carts





# iPad Logistics

- Apps and website links installed on iPads



- Pinned icons to iPad favorites bar





# Classroom logistics

- WIFI in the classrooms
- Librarian attach their iPad to classroom projector
- iPads shared with student teams
- Students use apps and icons for navigation
- Librarians use iPad during discussion to focus attention on important points



# Expectations vs. Experience

- Mobile device sharing
- Librarian concern – spending instruction time helping students use devices
- Managing the classroom
- Digital fluency



# Fall 2012 Instruction Statistics

## University Foundations

- UF 100 – 75 sections,  
2 library sessions
- UF 300 – 8 sections,  
3 library sessions
- 164 UF library sessions,  
4501 students

## Other Instruction

- Academic departments –  
English, Social Work,  
Education-Literacy, Criminal  
Justice, Sociology, Art  
History, Biology, . . .
- 15 classes, 356 students







## Barbara Glackin

Associate Dean  
Boise State University  
Albertsons Library  
[barbaraglackin@boisestate.edu](mailto:barbaraglackin@boisestate.edu)

## Amy Vecchione

Digital Access Librarian  
Boise State University  
Albertsons Library  
[amyvecchione@boisestate.edu](mailto:amyvecchione@boisestate.edu)  
@librarythinking

# THANK YOU